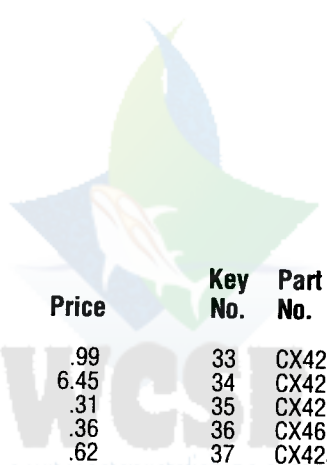
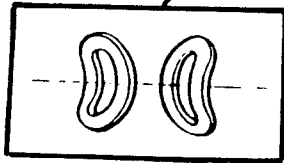
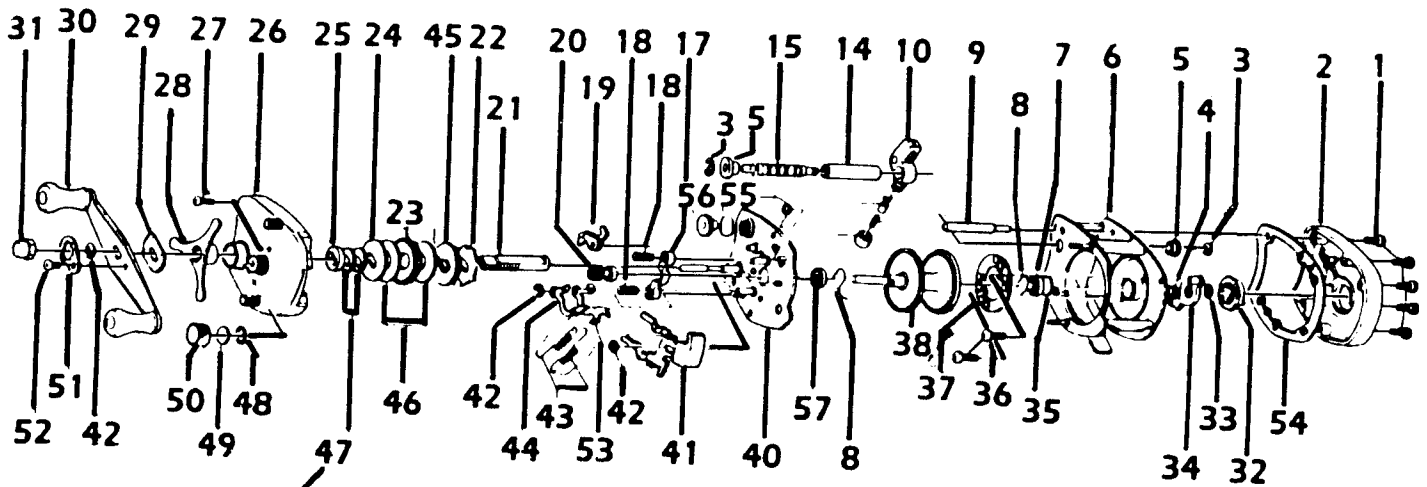


QUANTUM 1311MG



Key No.	Part No.	Description	Price	Key No.	Part No.	Description	Price
1	LX4102	Right Side Plate Screw	.99	33	CX4250	O Ring	.49
2	LX4101-1	Right Side Plate	6.45	34	CX4261	Magnet Retainer Support	1.46
3	CX4152	Worm Shaft Retainer	.31	35	CX4255	Spool Tension Shim A	.36
4	CX4301	Magnet Retainer Spring	.36	36	CX4602	Magnet Retainer Screw	.62
5	CX4156	Worm Guard Bushing	.62	37	CX4257	Magnet Retainer	8.59
6	LX4051-2	Frame	25.17	38	LX4251	Spool	14.72
7	CX4252	Spool Shaft Bearing	7.99	40	LX4351-1	Set Plate (incl. 16, 40, 4173 42(2), 44, 53)	18.73
8	CX4253	Bearing Retainer	.36	41	LX4402-1	Spool Release Button	2.64
9	EX4159	Frame Post - Silver	1.53	42	CX4656	Retainer Clip	.36
10	NX4201	Line Guide	7.55	43	FX4353	Set Plate Actuator Spring	.91
11	CX4203	Line Guide Pawl Spring	.36	44	LX4503	Set Plate Actuator B	1.79
12	CX4202	Line Guide Pawl	2.21	45	LX4658	(Anti-Reverse Ratchet)	3.86
13	CX4204	Pawl Cap	.91	46	CX4661-1	Drag Washer A	.36
14	EX4158	Worm Shaft Guard - Silver	2.46	47	CX4662	Drive Shaft Spring Washer	.36
15	FX4151-1	Worm Shaft	3.83	48	CX4258	O Ring	.36
16	CX4502	Spool Release Spring	.36	49	CX4302	Spool Tension Shim B	.36
17	CX4401	Pinion Yoke	.62	50	NX4259	Spool Tension Knob	2.40
18	CX4403	Pinion Yoke Spring	.36	51	LX4703	Handle Nut Lock	1.23
19	LX4452	Anti-Reverse Pawl	1.84	52	LX4704	Handle Nut Lock Screw	.49
20	LX4256	Pinion Gear	9.21	53	LX4501	Set Plate Actuator A	1.23
21	LX4652	Drive Shaft	4.90	54	NX4107	Right Side Plate Spacer	1.84
22	LX4451	Release Ratchet	1.23	55	CX4153	Gear Retaining Clip	.31
23	LX4651	Drive Gear	6.68	56	LX4150	Worm Shaft Gear	2.88
24	CX4659	Drag Washer B	.62	57	CX4252	Spool Shaft Bearing	7.99
25	CX4254	Drive Shaft Bushing	.62	Not Shown:			
26	LX4103-1	Left Side Plate	14.12	T130	Wrench	2.59	
27	LX4352	Left Side Cover Screw	.42	CX4000	Spare Parts Kit w/Wrench (incl. 1, 8, 27, 35, 49, 52)	3.69	
28	LX4663-1	Star Drag	6.14	NX4100	Level Wind Hood	4.85	
29	CX4660	Handle Washer	.36				
30	NX4701	Handle	6.14				
31	LX4702 -2	Handle Nut	1.53				
32	CX4303	Magnetic Control Dial	.99				

Prices subject to change without notice. Prices do not include postage and handling.

PLEASE ORDER BY PART NUMBER

Rev. 5/93

Zebco Division Brunswick Corporation, Box 270, Tulsa, OK 74101 USA 918-836-5581

