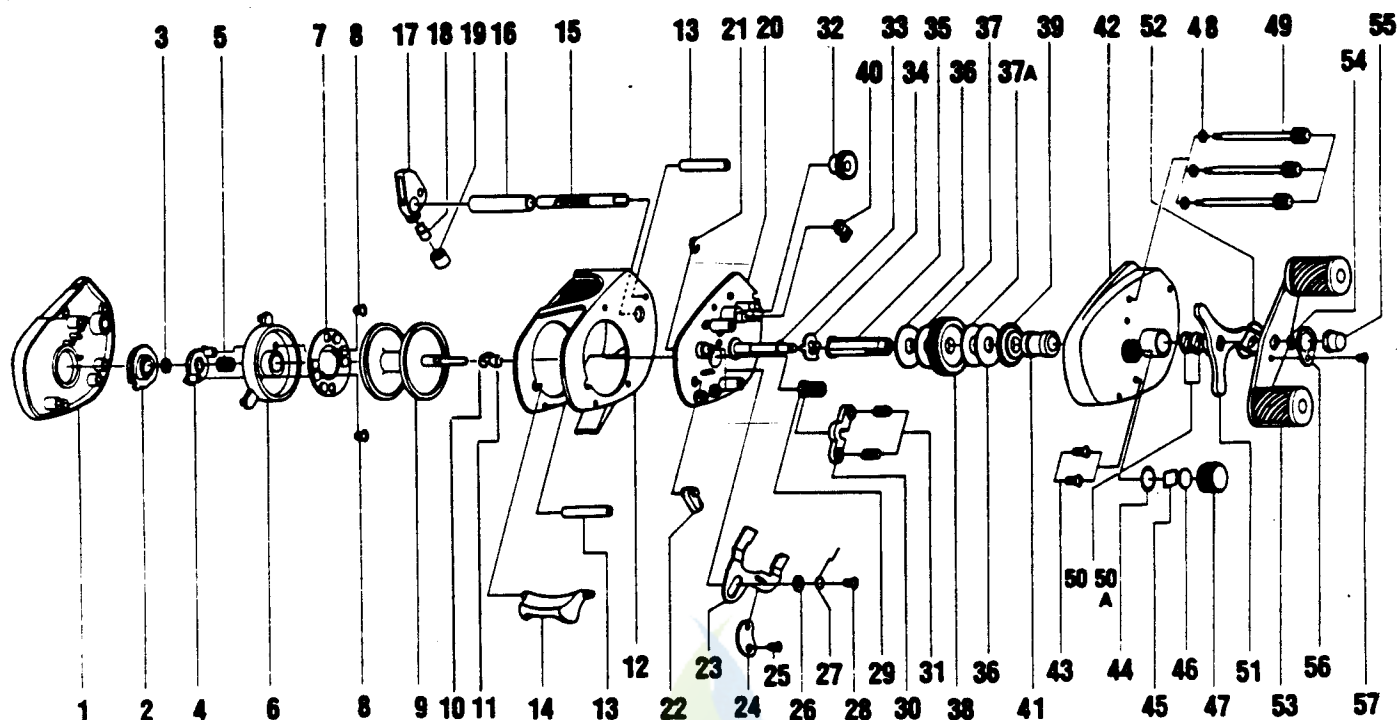


# ZEBCO 1511MG

DISCONTINUED



Key No.	Part No.	Description	Price	Key No.	Part No.	Description	Price
1	YX4101	LEFT SIDE COVER	10.03	32	GX4150	OSCILLATOR GEAR	3.14
2	VX4303	MAGNET CONTROL DIAL	1.53	33	GX4105	SET PLATE SHAFT WSHR	.49
3	VX4250	DIAL FRICTION RING	.85	34	GX4655	CONTROL ELEMENT	1.23
4	VX4261	SLIDE CAM	.91	35	GX4652	CRANK SHAFT	3.69
5	VX4301	SLIDE CAM SPRING	.80	36	GX4653	DRAG WASHER 'D'	1.84
6	YX4108	SPOOL COVER	4.71	37	GX4659	DRAG WASHER 'B'	1.46
7	VX4257	MAGNET PLATE ASSY	13.45	37	GX4659-1	DRAG W/S B (.8 T)	1.46
8	VX4602	MAGNET PLATE SCREW	1.77	38	GX4651	DRIVE GEAR	3.80
9	YX4251	SPOOL ASSY.	12.73	39	GX4451	ANTI-REVERSE	1.84
10	YX4253	CLIP RING	.91	40	YX4452	ANTI-REVERSE PAWL	3.78
11	YX4252	BALL BEARING	12.62	41	GX4254	RIGHT SIDE CVR BUSHING	2.21
12	YX4051	FRAME	10.16	42	YX4103	RIGHT SIDE COVER	8.72
13	GX4159	CARRIER GUIDE	1.72	43	GX4352	RIGHT SIDE CVR SCR	1.16
14	YX4406	THUMB BAR	5.74	44	GX4258	SPOOL TENSION KN. RING	.91
15	YX4151	WORM SHAFT	2.98	45	GX4304	SPOOL TEN. KN. WSHR (SQ)	.49
16	YX4158	WORM SHAFT GUIDE	4.87	46	GX4302	SPOOL TNSN. KN. WSHR.(FL)	.49
17	YX4201	LINE GUIDE CARRIER	6.42	47	YX4259	SPOOL TENSION KNOB	4.02
18	GX4202	LINE GUIDE PAWL	1.66	48	GX4109	FRAME SCREW WSHR	.49
19	GX4204	LINE GUIDE CARRIER SCR	1.78	49	GX4104	FRAME SCREW	1.53
20	YX4351	SET PLATE	9.35	50	GX4662	SPRING WASHER	1.53
21	GX4665	SHAFT CLIP-E	.49	50	GX4662-1	SPRING W/S (.4 T)	1.53
22	GX4406	THUMB BAR CAM	.99	51	GX4663	STAR DRAG	7.06
23	GX4402	RELEASE SLIDER	2.27	52	GX4660	HANDLE WASHER	1.23
24	GX4405	LINK	1.23	53	YX4701	HANDLE ASSY.	10.16
25	GX4506	LINK SCREW	.74	54	GX4657	CRANK SHAFT E-CLIP	.49
27	GX4502	SPOOL REL. SPRING	.91	55	GX4702	HANDLE NUT	.99
28	GX4656	RELEASE SLIDER SCREW	.91	56	GX4703	HANDLE NUT LOCK	.91
29	GX4256	PINION GEAR ASSY	2.83	57	GX4704	HANDLE NUT LOCK SCR	.42
30	GX4401	PINION YOKE	1.16	58	YX4105	SET PLATE SHAFT W/S	.80
31	GX4403	PINION YOKE SPR	.91	59	YX4156	SPOOL SHAFT BUSHING	2.00

Prices subject to change without notice. Prices do not include postage and handling. Some parts may not be available.

**PLEASE ORDER BY PART NUMBER**

Rev. 5/93

Zebco Division Brunswick Corporation, Box 270, Tulsa, OK 74101 USA 918-836-5581

