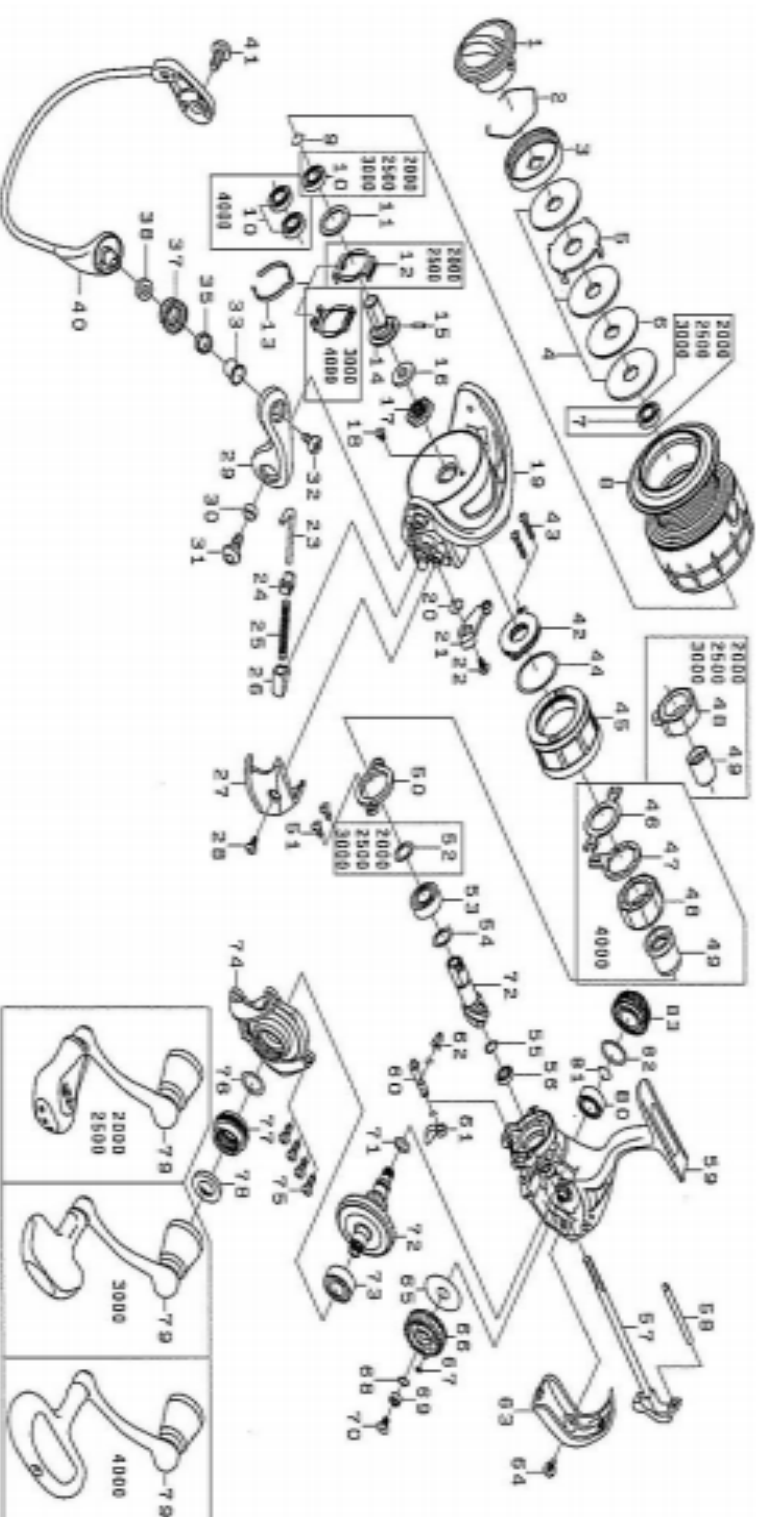




14 BALLISTIC EX 3000H

Feel Alive.

Please quote by part number, not key number when ordering.
spares@daiwaaustralia.com.au PH: (02) 8644 8644



REEL NAME	MGFT CODE	KEY NO	PARTS CODE	DESCRIPTION
14 BALLISTIC EX 3000H		1	6J095001	DRAG KNOB
14 BALLISTIC EX 3000H		2	6F710001	DRAG WASHER RETAINER
14 BALLISTIC EX 3000H		3	6F895301	DRAG KNOB CLICK PLATE
14 BALLISTIC EX 3000H		4	6F691001	DRAG WASHER
14 BALLISTIC EX 3000H		5	6F627301	EARED WASHER
14 BALLISTIC EX 3000H		6	6F627201	KEY WASHER
14 BALLISTIC EX 3000H		7	6E306801	BALL BEARING (A)
14 BALLISTIC EX 3000H		8	6J095701	SPOOL ASSEMBLY(2-8)
14 BALLISTIC EX 3000H		9	6G472401	BEARING RETAINER (A)
14 BALLISTIC EX 3000H		10	6E306801	BALL BEARING (B)
14 BALLISTIC EX 3000H		11	6H806300	WASHER (A)
14 BALLISTIC EX 3000H		12	6H416001	CLICK LEAF SPRING HOLDER
14 BALLISTIC EX 3000H		13	6H883701	SPOOL CLICK LEAF SPRING
14 BALLISTIC EX 3000H		14	6H615001	SPOOL METAL
14 BALLISTIC EX 3000H		15	6G375001	PIN
14 BALLISTIC EX 3000H		16	6H986901	PACKING(A)
14 BALLISTIC EX 3000H		17	6H961101	ROTOR NUT
14 BALLISTIC EX 3000H		18	6H022701	SCREW (A)
14 BALLISTIC EX 3000H		19	6H986306	ROTOR
14 BALLISTIC EX 3000H		20	6H413601	BAIL TRIP LEVER SPRING
14 BALLISTIC EX 3000H		21	6J072301	BAIL TRIP LEVER
14 BALLISTIC EX 3000H		22	6H417701	SCREW (B)
14 BALLISTIC EX 3000H		23	6H572001	BAIL SPRING SHAFT
14 BALLISTIC EX 3000H		24	6H576101	BAIL SPRING PLATE
14 BALLISTIC EX 3000H		25	6J089301	BAIL SPRING
14 BALLISTIC EX 3000H		26	6J089401	BAIL SPRING HOLDER
14 BALLISTIC EX 3000H		27	6H986401	COVER (A)
14 BALLISTIC EX 3000H		28	6H431301	SCREW (C)
14 BALLISTIC EX 3000H		29	6H728909	BAIL ARM
14 BALLISTIC EX 3000H		30	6H962401	COLLAR (A)
14 BALLISTIC EX 3000H		31	6H431201	SCREW (D)
14 BALLISTIC EX 3000H		32	6G195602	SCREW (E)
14 BALLISTIC EX 3000H		33	6G195501	COLLAR (B)
14 BALLISTIC EX 3000H		35	6G220701	COLLAR (C)
14 BALLISTIC EX 3000H		37	6J089901	LINE ROLLER
14 BALLISTIC EX 3000H		38	6G874201	COLLAR (D)
14 BALLISTIC EX 3000H		40	6J094301	BAIL ASSEMBLY
14 BALLISTIC EX 3000H		41	6H431201	SCREW (F)
14 BALLISTIC EX 3000H		42	6H532602	MAGNET ASSEMBLY
14 BALLISTIC EX 3000H		43	6H596501	SCREW (G)
14 BALLISTIC EX 3000H		44	6H413001	"O"RING (A)
14 BALLISTIC EX 3000H		45	6H609312	COVER (B)
14 BALLISTIC EX 3000H		46	-	-
14 BALLISTIC EX 3000H		47	-	-
14 BALLISTIC EX 3000H		48	6H412601	ROLLER CLUTCH
14 BALLISTIC EX 3000H		49	6H615501	SPACING SLEEVE
14 BALLISTIC EX 3000H		50	6H411501	BEARING RETAINER(B)
14 BALLISTIC EX 3000H		51	6G997301	SCREW (H)
14 BALLISTIC EX 3000H		52	63758501	WASHER (B)
14 BALLISTIC EX 3000H		53	6G535105	BALL BEARING (C)
14 BALLISTIC EX 3000H		54	63758500	WASHER (C)
14 BALLISTIC EX 3000H		55	6H931701	SPRING WASHER
14 BALLISTIC EX 3000H		56	6G466202	BALL BEARING (D)
14 BALLISTIC EX 3000H		57	6H614001	MAIN SHAFT
14 BALLISTIC EX 3000H		58	6H614301	STABILIZER BAR
14 BALLISTIC EX 3000H		59	6J095101	BODY
14 BALLISTIC EX 3000H		60	6H595501	ANTI-REVERSE CAM
14 BALLISTIC EX 3000H		61	6H595401	ANTI-REVERSE LEVER
14 BALLISTIC EX 3000H		62	6H697801	ANTI-REVERSE CAM SPRING
14 BALLISTIC EX 3000H		63	6H615402	REAR COVER

