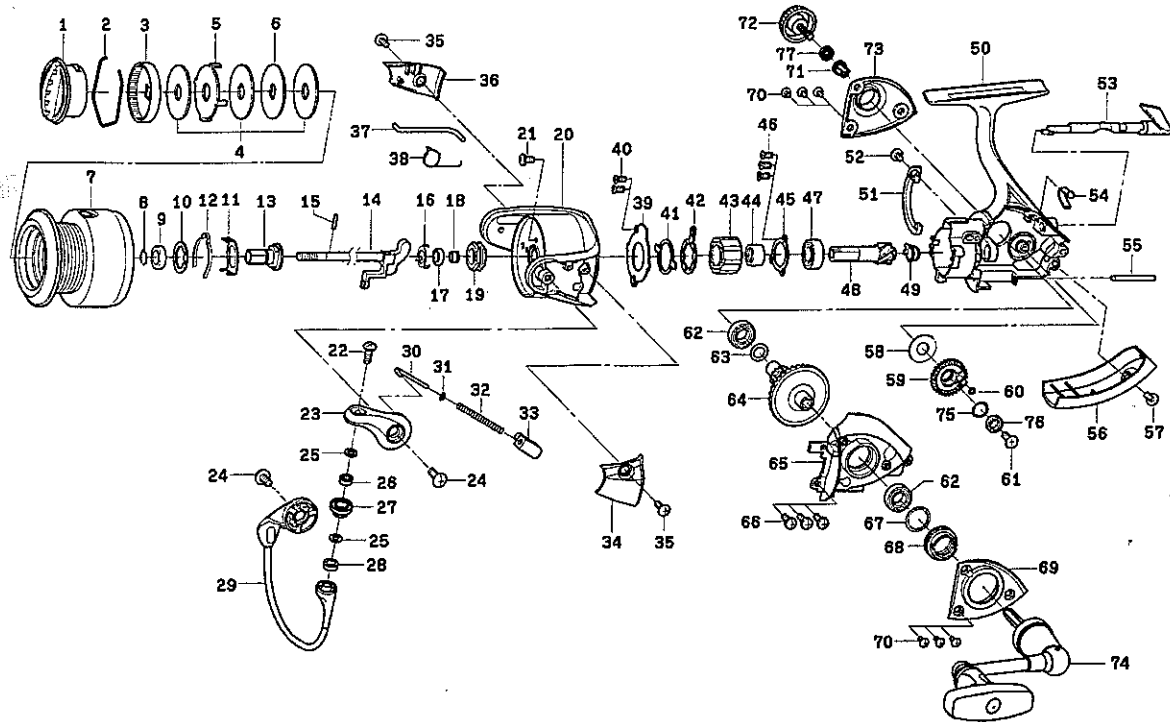



Daiwa
 COMMITTED TO TOTAL QUALITY
 SPINNING REEL

HEARTLAND XA4000



Key No.	Parts No.	Parts Name	Key No.	Parts No.	Parts Name
1	6H199901	Drag Knob	40	6G557101	Screw (E)
2	6F710001	Drag Washer Retainer	41	6F641501	Clutch Cam Retainer
3	6F895302	Drag Knob Click Plate	42	6F641401	Clutch Cam
4	6F627101	Drag Washer	43	6G314501	Roller Clutch
5	6F627301	Eared Washer	44	6G644901	Spacing Sleeve
6	6F644701	Key Washer	45	6G522901	Bearing Retainer (B)
2-7	6H199701	Spool Assembly	46	6E134509	Screw (F)
8	6G525101	Collar Retainer	47	6G522801	Ball Bearing (C)
9	6G576001	Collar (A)	48	6G645101	Pinion Gear
10	6F643500	Washer (A)	49	6G644801	Collar (D)
11	6G694001	Click Leaf Spring Holder	50	6H199501	Body
12	6F709002	Spool Click Leaf Spring	51	6G645901	Brake Shoe
13	6G642301	Spool Metal	52	6F505701	Screw (G)
14	6G644401	Main Shaft	53	6G609926	Anti-Reverse Lever
15	6F643601	Pin	54	6G627801	Anti-Reverse Cam Spring
16	6G524801	Bearing Retainer (A)	55	6G644701	Stabilizer Bar
17	6G467101	Ball Bearing (A)	56	6G646008	Rear Cover
18	6G646701	Collar (B)	57	63522501	Screw (H)
19	6G524701	Rotor Nut	58	6G644201	Washer (D)
20	6G646116	Rotor	59	6G644301	Oscillating Gear
21	6G627701	Screw (A)	60	6B853101	"O" Ring (A)
22	6G195601	Screw (B)	61	6G521901	Screw (I)
23	6G612323	Bail Arm	62	6G523403	Ball Bearing (D)
24	6G205001	Screw (C)	63	6G645301	"O" Ring (B)
25	6F897101	Washer (B)	64	6G645201	Drive Gear
26	6G281601	Ball Bearing (B)	65	6G645507	Side Cover
27	6F921601	Line Roller	66	6G468401	Screw (J)
28	6G047601	Collar (C)	67	6G645601	Washer (E)
29	6G646401	Bail Assembly	68	6G645801	Screw (K)
30	6G298201	Bail Spring Shaft	69	6G645701	Bearing Retainer (C)
31	6E313901	Washer (C)	70	6G611501	Screw (L)
32	6G646201	Bail Spring	71	6F721201	Collar (E)
33	6G612103	Bail Spring Holder	72	6G643402	Handle Screw
34	6G646301	Cover (A)	73	6G645401	Bearing Retainer (D)
35	6G270801	Screw (D)	74	6H199601	Handle Assembly
36	6G646601	Cover (B)	75	6G522100	Washer (F)