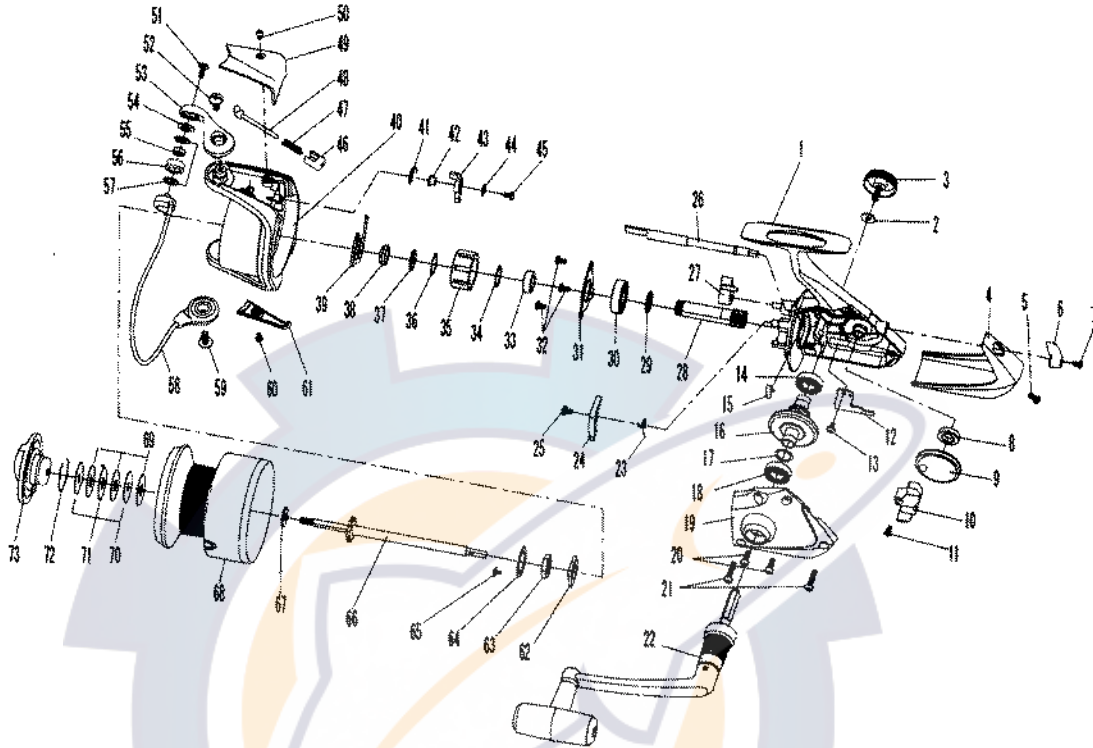


Daiwa

COMMITTED TO TOTAL QUALITY

SPINNING REEL

OPUS 4500/5000



Key No.	Parts No.	Parts Name	Key No.	Parts No.	Parts Name
1	W39-0002	BODY	40	W39-2702	ROTOR
2	W30-6401	HANDLE LOCK SCREW WASHER	41	W31-1701	BAIL TRIP LEVER SPRING
3	W39-0101	HANDLE SCREW	42	W39-2801	BAIL TRIP LEVER COLLAR
4	W39-0202	REAR COVER	43	W39-2901	BAIL TRIP LEVER
5	W39-0301	REAR COVER SCREW	44	W31-1801	BAIL TRIP LEVER WASHER
6	W36-0301	A/R LEVER	45	W39-3001	BAIL TRIP LEVER SCREW
7	W36-0401	A/R LEVER SCREW	46	W39-3101	BAIL SPRING HOLDER
8	W30-5601	OSC GEAR COLLAR	47	W39-3201	BAIL SPRING
9	W30-5401	OSC GEAR	48	W39-3301	BAIL SPRING SHAFT
10	W30-5301	OSC SLIDER	49	W39-3402	BAIL SPRING COVER
11	W30-5101	OSC SLIDER SCREW	50	W36-7401	BAIL SPRING COVER SCREW
12	W30-5001	OSC SLIDER HOLDING PLT	51	W36-7601	LINE ROLLER SCREW
13	W39-0601	OSC SLIDER HOLD PLT SCREW	52	W36-7501	BAIL ARM SCREW
14	W30-3801	DRIVE GEAR BUSHING	53	W39-3502	BAIL ARM
15	W39-0701	A/R CAM SPRING	54	W30-6201	LINE ROLLER WASHER B
16	W30-3401	DRIVE GEAR	55	W36-8051	LINE ROLLER COLLAR
17	W30-4401	DRIVE GEAR WASHER	56	W36-8101	LINE ROLLER
18	W30-4201	SIDE COVER BUSHING	57	W30-6101	LINE ROLLER WASHER A
19	W39-0802	SIDE COVER	58	W39-3602	BAIL
20	W39-0901	SIDE COVER SCREW A	59	W36-7501	BAIL HOLDER SCREW
21	W39-1001	SIDE COVER SCREW B	60	W36-7401	BAIL HOLDER COVER SCREW
22	W39-1102	HANDLE	61	W39-3702	BAIL HOLDER COVER
23	W39-1201	A/R PAWL SPRING A	62	W30-8201	ROTOR NUT HOLD PLT
24	W39-1301	A/R PAWL A	63	W30-8701	ROTOR NUT
25	W39-1401	A/R PAWL A SCREW	64	W30-6501	ROTOR NUT WASHER
26	W39-1501	A/R CAM	65	W36-8901	ROTOR NUT HOLD PLT SCREW
27	W39-1601	A/R PAWL B	66	W39-3801	MAIN SHAFT
28	W39-1701	PINION GEAR	67	W39-3901	CLICK GEAR
29	W39-1801	PINION WASHER	68-72	W39-4003	SPOOL
30	W30-1501	BALL BEARING	69	W36-9601	DRAG WASHER
31	W39-1901	BEARING RET	70	W36-9701	KEY WASHER
32	W30-9501	BEARING RET SCREW	71	W36-9801	EARED WASHER
33	W39-2001	SPACING SLEEVE	72	W36-9901	DRAG WASHER RET
34	W39-2101	BALL BEARING WASHER	73	W36-9501	DRAG KNOB
35	W39-2201	ROLLER CLUTCH			
36	W39-2301	ROLLER CLUTCH WASHER			
37	W39-2401	COLLAR A			
38	W39-2501	COLLAR B			
39	W39-2601	A/R PAWL SPRING B			

SPECIAL PART FOR OP5000

Key No.	Parts No.	Parts Name
68-72	W39-4004	SPOOL