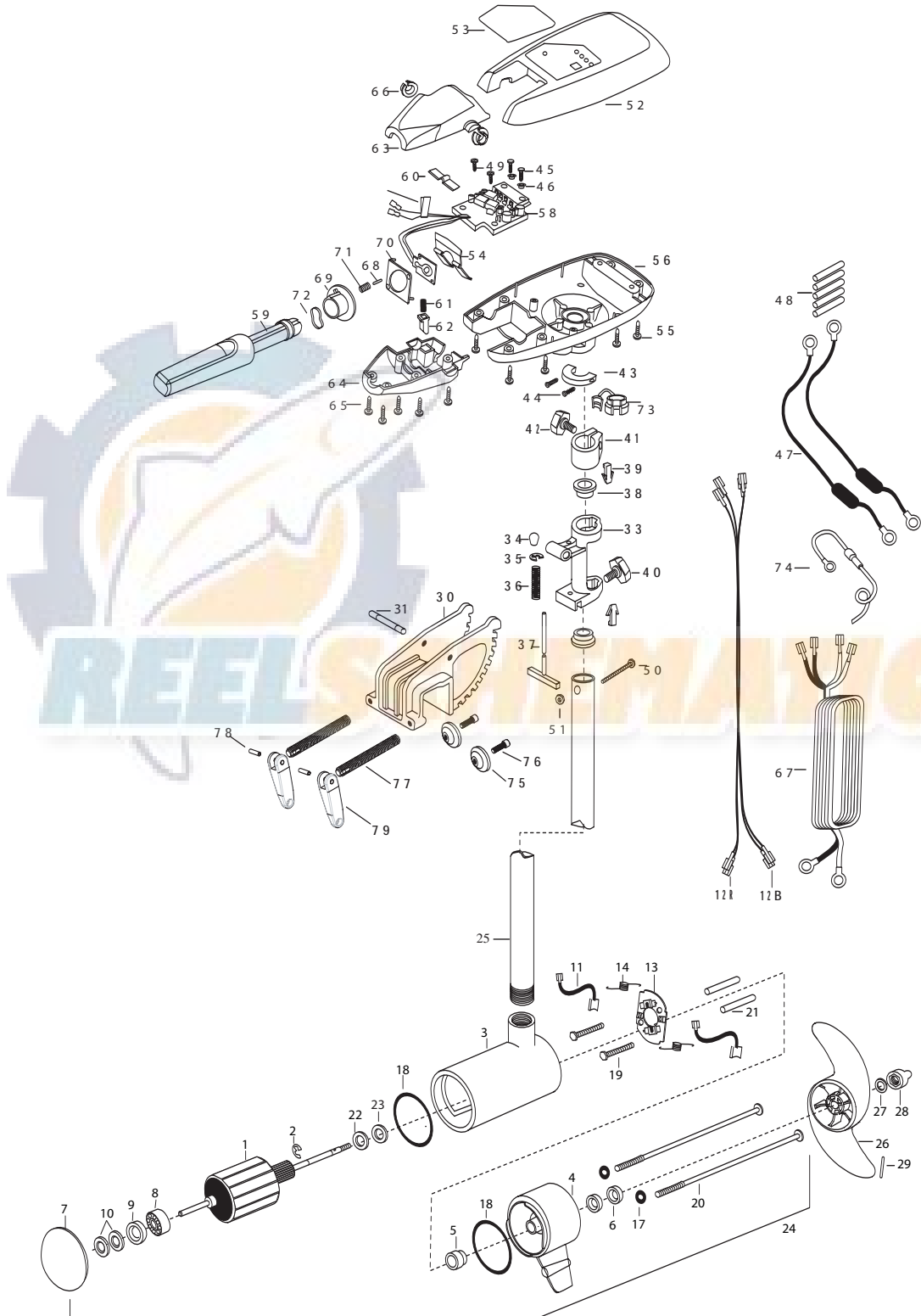


RT101/S  
101 lbs Thrust  
36 Volt 46 Amps  
52" Shaft

for use with "AG" serial numbers  
3-year warranty from the date of purchase



|     |           |   |    |         |                                    |    |  |
|-----|-----------|---|----|---------|------------------------------------|----|--|
| 1   | 2-100-216 | ARMATURE ASSEMBLY 36V VARS SW           | 29 | 2262658 | PIN-DRIVE SS                       |    |  |
| 2   | 788-040   | RETAINING RING                          | ■  | 2991830 | BRACKET & HINGE ASSEMBLY (SW)      | 58 | 2264013 CTRL BOARD ASSEMBLY-RT 101       |
| 3   | 431-310   | CENTER HOUSING ASSEMBLY- 4.0 SW TXT WHT | 30 | 2031934 | BRACKET DIE CAST SW WHITE 10P      | 59 | 2990915 HANDLE ASSEMBLY W/O U-JOINT      |
| 4   | 2-300-340 | BRUSH END HOUSING ASSEMBLY 4 SW WHT     | 31 | 2010512 | PIN-DRIVE LOK 3/8X2-1/2 SS         | 60 | 2302742 SPRING-DETENT (OFF) SS           |
| 5   | 144-017   | BEARING -FLANGE (SERVICE ONLY)          | 33 | 2031856 | HINGE-MACH SS RT WHITE             | 61 | 2302745 SPRING-RELEASE BUTTON SS         |
| 6   | 880-025   | **SEAL [2.EA]                           | 34 | 2010100 | KNOB-TILT                          | 62 | 2303720 RELEASE BUTTON-HANDLE            |
| 7   | 421-376   | PLAIN END HOUSING ASSEMBLY 4.0 WHT      | 35 | 2333001 | E-RING- SS                         | 63 | 2060411 HANDLE (TOP HALF) MAXIMIZE       |
| 8   | 140-010   | BALL BEARING                            | 36 | 2332700 | SPRING- (T-BAR) SS                 | 64 | 2060415 HANDLE (LOWER HALF)              |
| 9   | 990-045   | THRUST SPACER                           | 37 | 2033601 | T-BAR (E-COAT)                     | 65 | 2303412 SCREW-6-20 X 5/8 SELF TAP [5.EA] |
| 10  | 992-010   | SPRING WASHER [2.EA]                    | 38 | 2037301 | BUSHING-HINGE [2.EA]               | 66 | 2060005 BEARING-HANDLE PIVOT [2.EA]      |
| 11  | 188-094   | BRUSH 4" W/TERMINAL [2.EA]              | 39 | 2062800 | TENSION BLOCK- "SNAP IN" [2.EA]    | 67 | 2050609 LEADWIRE (10 GA) RINGS           |
| 12B | 640-018   | BRUSH WIRE BLACK 10 AWG 62"             | 40 | 2011386 | SCREW-TENSION/NEW KNOB SS          | 68 | 2302600 PIN-ACTUATOR                     |
| 12R | 640-123   | BRUSH WIRE RED 10 AWG 64"               | 41 | 2061520 | COLLAR-DEPTH                       | 69 | 2302850 ACTUATOR-CAM                     |
| 13  | 738-004   | BRUSH PLATE -4" TERMINAL                | 42 | 2011366 | SCREW-COLLAR/NW KNOB SS            | 70 | 2302851 ACTUATOR-FWD/REV                 |
| 14  | 975-041   | SPRING -TORSION [2.EA]                  | 43 | 2061517 | COLLAR-CTRL BOX SW WHITE           | 71 | 2302740 SPRING- (ACTUATOR)               |
| 17  | 701-009   | **O-RING -THRU BOLT [2.EA]              | 44 | 2263434 | SCREW #8-3/4 PPH TYPE 25 SS [2.EA] | 72 | 2302741 SPRING-CAM (ZNC PLTD STEEL)      |
| 18  | 701-043   | **O-RING [2.EA]                         | 45 | 2301310 | SCREW-8-18 X 1/2 SS [2.EA]         | 73 | 2052900 STRAIN RELIEF-C.CORD/SPC         |
| 19  | 830-027   | SCREW -SELF THREADED 10-32 X 2"[2.EA]   | 46 | 2301710 | WASHER-INSUL. (TRANSF.BAR) [2.EA]  | 74 | 2340610 CONNECTOR CABLE 12"              |
| 20  | 830-096   | THRU BOLT 12-24 X 11.56" SS [2.EA]      | 47 | 2998200 | CIRCUIT BRKR ASSEMBLY,36V- [1.EA]  | 75 | 2331700 WASHER, CLAMP SCREW SS [2.EA]    |
| 21  | 973-025   | SPACER -BRUSH PLATE [2.EA]              | 48 | 2305400 | SHRINK TUBE-3/8 OD X 1-1/ [5.EA]   | 76 | 2263452 SCREW 1/4-20 X 3/4 SS [2.EA]     |
| 22  | 990-051   | WASHER-STEEL THRUST                     | 49 | 2372100 | SCREW-8-18 X 5/8 THD* SS [2.EA]    | 77 | 2051301 CLAMP SCREW [2.EA]               |
| 23  | 990-052   | WASHER- NYLATRON                        | 50 | 2263406 | SCREW-#10-24 X 2 (SS) PPH          | 78 | 2052625 PIN-HANDLE                       |
| 24  | 2316288   | MOTOR ASSEMBLY 36V VARS WHITE           | 51 | 2333101 | NUT-HEX 10-24 UNC-2B NYLOCK        | 79 | 2050925 HANDLE-SCREW                     |
| 25  | 2032034   | TUBE (COMPOSITE) 52" WHITE              | 52 | 2300219 | COVER- CONTROL BOX (SW) RT WHITE   | ■  | 2991301 CLAMP SCREW-HANDLE ASSEMBLY      |
| ■   | 1378132   | PROPELLER KIT                           | 53 | 2095685 | DECAL-COVER RT101/B/S              |    | (INCLUDES ITEMS 77,78,79)                |
| 26  | 2331160   | PROPELLER (WW2)                         | 54 | 2302743 | SPRING-DETENT HANDLE-TILT          |    |  |
| 27  | 2091701   | WASHER- PROP LARGE MAX                  | 55 | 2303412 | SCREW-6-20 X 5/8 SELF TAP [6.EA]   |    |  |
| 28  | 2198401   | ANODE- ZINC 4.0 LWR UNIT                | 56 | 2062596 | CONTROL BOX,SW, WHITE .725 BORE    |    |  |

\*\* Seal & Oring Kit P/N 2889460 \* This item is part of an assembly. This item cannot be sold separately due to machining and /or assembly that is required.

P/N 2094913 REV. A

