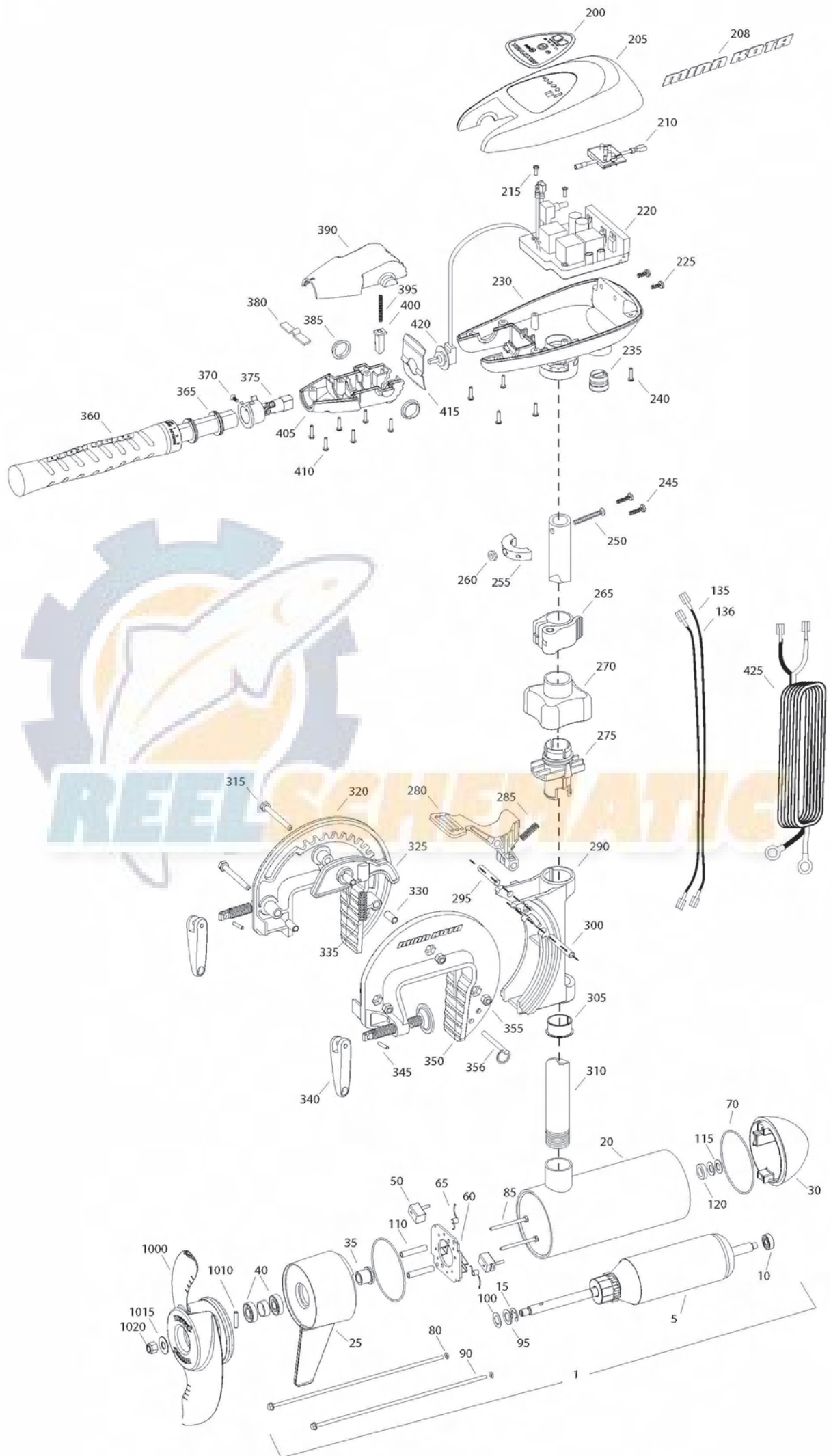


**RT101/T**  
**101 LBS THRUST**  
**36 VOLT 46 AMPS**  
**52" SHAFT**

for use with "L" serial numbers  
2-year warranty



| Item | P/N       | Description                    | Qty | Item | P/N     | Description                      | Qty       | Item | P/N     | Description              | Qty |
|------|-----------|--------------------------------|-----|------|---------|----------------------------------|-----------|------|---------|--------------------------|-----|
| 1    | 2316288   | 36V Motor 52" SW               | 1   | ■    | 2991798 | Bracket assy, Aluminum [270-356] | 1         | ■    | 1378132 | Propeller kit WW2        |     |
| 5    | 2-100-216 | Armature assembly              | 1   | 270  | 2060100 | Knob, steering tension, soft     | 1         | ■    | 2994876 | Propeller bag assy       |     |
| 10   | 140-010   | Bearing                        | 1   | 275  | 2068400 | Collet                           | 1         | 1000 | 2331160 | Propeller WW2            | 1   |
| 15   | 788-040   | Retaining ring                 | 1   | 280  | 2064200 | Lock arm                         | 1         | 1010 | 2262658 | Drive pin, large         | 1   |
| 20   | 2-200-310 | Center housing assembly        | 1   | 285  | 2062701 | Spring, lock arm                 | 1         | 1015 | 2091701 | Washer, prop, large      | 1   |
| 25   | 2-300-340 | Brush end housing assembly     | 1   | 290  | 2061821 | Hinge                            | 1         | 1020 | 2198401 | Nut, nylock, prop, Anode | 1   |
| 30   | 421-376   | Plain end housing assembly STD | 1   | 295  | 2062603 | Pin, lock, ss                    | 1         |      |         |                          |     |
| 35   | 144-017   | Flange bearing                 | 1   | 300  | 2062603 | Pin, lock, ss                    | 1         |      |         |                          |     |
| 40   | 880-025   | Seal                           | 2   | 305  | 2037301 | Bushing, hinge                   | 1         |      |         |                          |     |
| 50   | 188-094   | Brush                          | 2   | 310  | 2002014 | Tube 52"                         | 1         |      |         |                          |     |
| 60   | 9-738-004 | Brush plate assembly           | 1   | 315  | 2063501 | Bolt 1/4-20 x 2 3/8", ss         | 3         |      |         |                          |     |
| 65   | 975-041   | Brush spring                   | 2   | 320  | 2771949 | Bracket, right, SW               | 1         |      |         |                          |     |
| 70   | 701-043   | O-ring, motor                  | 2   | 325  | 2067905 | Cam deactivator                  | 1         |      |         |                          |     |
| 80   | 701-009   | O-ring, thru-bolt              | 2   | 330  | 2067306 | Bushing, dowel 1/4 x 1/2         | 3         |      |         |                          |     |
| 85   | 830-027   | Screw, 10-32 x 2               | 2   | 335  | 2062700 | Spring, cam deactivator          | 1         |      |         |                          |     |
| 90   | 830-096   | Thru-bolt                      | 2   | ■    | 2771303 | Clamp screw kit                  | 2 per kit |      |         |                          |     |
| 95   | 990-051   | Washer, steel                  | 2   | 340  | 2050925 | Handle, clamp                    | 2         |      |         |                          |     |
| 100  | 990-052   | Washer, nyatron                | 2   | 345  | 2052625 | Roll pin                         | 2         |      |         |                          |     |
| 110  | 973-025   | Spacer, brush plate            | 2   | 350  | 2771948 | Bracket, left, SW                | 1         |      |         |                          |     |
| 115  | 992-010   | Washer, Belleville             | 2   | 355  | 2263103 | Nut, 1/4-20, nylock, ss          | 3         |      |         |                          |     |
| 120  | 992-045   | Spacer, thrust                 | 1   | 356  | 2062604 | Pin, stop                        | 1         |      |         |                          |     |
| 135  | 640-018   | Leadwire, black                | 1   |      |         |                                  |           |      |         |                          |     |
| 136  | 640-123   | Leadwire, red                  | 1   | ■    | 2990957 | Handle assy, VARS [360-410]      | 1         |      |         |                          |     |
| ■    | 2889460   | Seal and O-ring Kit            |     | 360  | 2990456 | Grip/handle assy, VARS [360-375] | 1         |      |         |                          |     |
|      |           |                                |     | 365  | 2060015 | Bearing, handle                  | 2         |      |         |                          |     |
| 200  | 2095604   | Decal, c-box cover             | 1   | 370  | 2063405 | Screw, #6 PFH SS                 | 1         |      |         |                          |     |
| 205  | 2060296   | C-box cover                    | 1   | 375  | 2884092 | Yoke / spider assy, VARS         | 1         |      |         |                          |     |
| 208  | 2325666   | Decal - MinnKota               | 2   | 380  | 2302742 | Spring, detent, off              | 1         |      |         |                          |     |
| 210  | 2074082   | Battery meter, 36v SW          | 1   | 385  | 2060005 | Bearing, handle pivot            | 2         |      |         |                          |     |
| 215  | 2043427   | Screw, #8 x 7/8 SS             | 2   | 390  | 2060900 | Handle pivot, top                | 1         |      |         |                          |     |
| 220  | 2184007   | Control board, 24/36v          | 1   | 395  | 2302745 | Spring, release button           | 1         |      |         |                          |     |
| 225  | 2303434   | Screw, #8-30 x 5/8 SS          | 2   | 400  | 2063700 | Button, release                  | 1         |      |         |                          |     |
| 230  | 2062503   | Control box, VARS, SW          | 1   | 405  | 2060905 | Handle pivot, bottom             | 1         |      |         |                          |     |
| 235  | 2062905   | Strain relief                  | 1   | 410  | 2303412 | Screw, #6 x 5/8 SS               | 6         |      |         |                          |     |
| 240  | 2303412   | Screw, #6 x 5/8 SS             | 6   | 415  | 2062715 | Spring, handle pivot             | 1         |      |         |                          |     |
| 245  | 2263434   | Screw, #8 x 1 SS               | 2   | 420  | 2061700 | Washer, pot holder               | 1         |      |         |                          |     |
| 250  | 2263406   | Screw, #10-24 x 2 SS           | 1   | 425  | 2992523 | Leadwire assy, includes [235]    | 1         |      |         |                          |     |
| 255  | 2061517   | Collar, c-box                  | 1   |      |         |                                  |           |      |         |                          |     |
| 260  | 2333101   | Nut, 10-24, nylock, SS         | 1   |      |         |                                  |           |      |         |                          |     |
| 265  | 2991521   | Cam lock/depth collar assy     | 1   |      |         |                                  |           |      |         |                          |     |

\* This item is part of an assembly. This item cannot be sold separately due to machining and /or assembly that is required.

# 12-24-36 VOLT VARIABLE SPEED MODELS

**THIS IS A UNIVERSAL MULTI-VOLTAGE DIAGRAM. DOUBLE CHECK YOUR MOTORS VOLTAGE FOR PROPER CONNECTIONS**

RT101 is 36-volt only!

