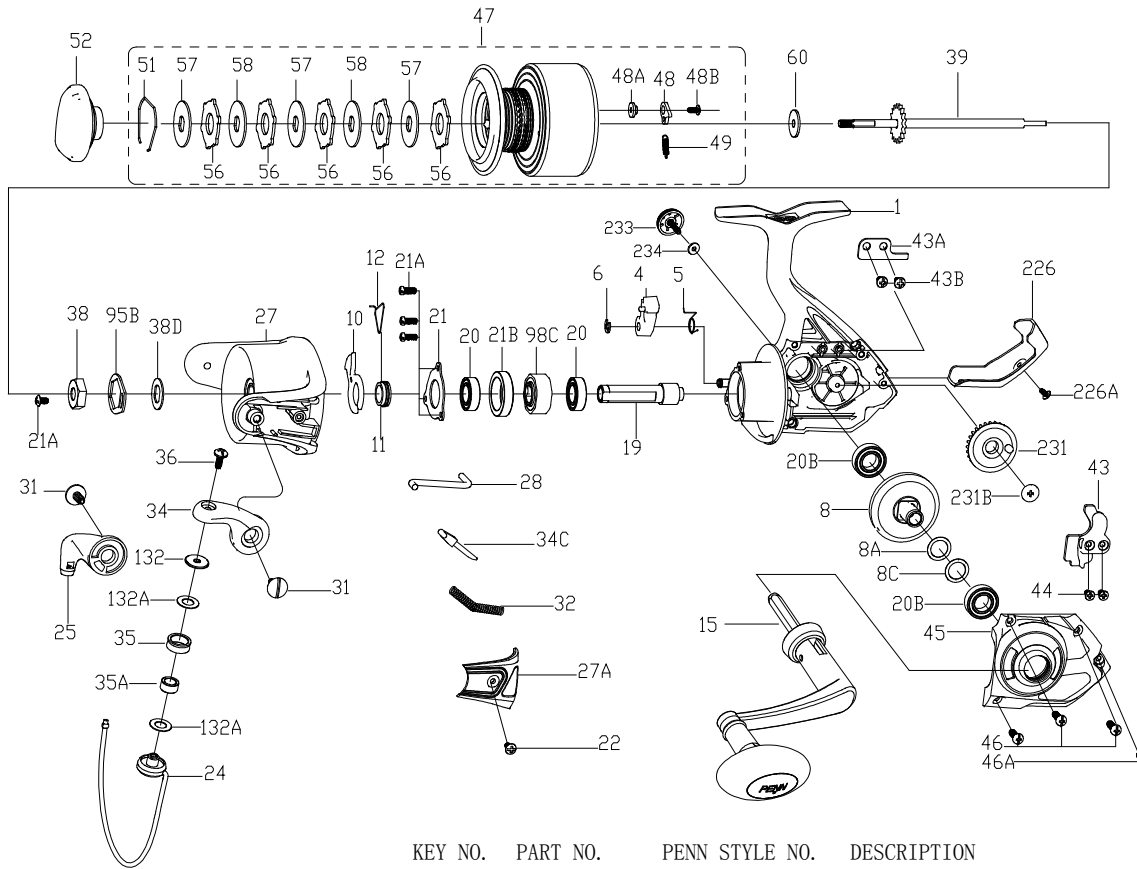




**PARTS LIST FOR MODEL AS WRTH8000**



| KEY NO. | PART NO. | PENN STYLE NO.  | DESCRIPTION                   |
|---------|----------|-----------------|-------------------------------|
| 21A     | 1204016  | 21A-5000PUR     | Screw (4 req)                 |
| 21B     | 1324209  | 21B-BTLII5000   | Collar                        |
| 22      | 1204018  | 22-6000PUR      | Bail Pivot Cover Screw        |
| 24      | 1514990  | 24-WRTH8000     | Bail Wire                     |
| 25      | 1514991  | 25-WRTH8000     | Bail Holder                   |
| 27      | 1514992  | 27-WRTH8000     | Rotor                         |
| 27A     | 1365756  | 27A-FRCII8000   | Bail Pivot Cover              |
| 28      | 1365757  | 28-FRCII8000    | Trip Lever                    |
| 31      | 1365758  | 31-FRCII8000    | Bail Arm Screw (2 req)        |
| 32      | 1313874  | 32-CFT8000      | Bail Spring                   |
| 34      | 1313875  | 34-CFT8000      | Bail Arm                      |
| 34C     | 1191656  | 34C-7000SG      | Pivot Arm                     |
| 35      | 1313876  | 35-CFT8000      | Line Roller                   |
| 35A     | 1313877  | 35A-CFT8000     | Line Roller Bushing           |
| 36      | 1191704  | 36-7000SG       | Bail Stud Screw               |
| 38      | 1191731  | 38-7000SG       | Rotor Nut                     |
| 38D     | 1308104  | 38D-CFT5000     | Rotor Nut Washer              |
| 39      | 1514993  | 39-WRTH8000     | Main Shaft Assembly           |
| 43      | 1485595  | 43-PURIII8000   | Crosswind Block               |
| 43A     | 1191821  | 43A-7000SG      | Crosswind Block Plate         |
| 43B     | 1203997  | 43B-3000PUR     | Screw (2 req)                 |
| 44      | 1191845  | 44-5000SG       | Crosswind Block Screw (2 req) |
| 45      | 1514994  | 45-WRTH8000     | Housing Cover                 |
| 46      | 1485592  | 46-PURIII8000   | Housing Cover Screw (3 req)   |
| 46A     | 1485593  | 46A-PURIII8000  | Housing Cover Screw           |
| 47      | 1514995  | 47-WRTH8000     | Spool Assembly                |
| 48      | 1211625  | 48-5000SG       | Click Tongue                  |
| 48A     | 1211626  | 48A-5000SG      | Click Tongue Washer           |
| 48B     | 1192658  | 22-2000SG       | Spool Click Screw             |
| 49      | 1211627  | 49-5000SG       | Click Tongue Spring           |
| 51      | 1308112  | 51-CFT5000      | Drag Retaining Ring           |
| 52      | 1514996  | 52-WRTH8000     | Drag Knob Assembly            |
| 56      | 1192038  | 56-7000SG       | Drag Washer (5 req)           |
| 57      | 1514997  | 57-WRTH8000     | Keyed Washer (3 req)          |
| 58      | 1192055  | 58-7000SG       | Eared Washer (2 req)          |
| 60      | 1514998  | 60-WRTH8000     | Thrust Washer                 |
| 95B     | 1308115  | 95B-CFT5000     | Rotor Locking Plate           |
| 98C     | 1485588  | 98C-PURIII8000  | Clutch/Sleeve Assembly        |
| 132     | 1192298  | 132-7000SG      | Roller Washer                 |
| 132A    | 1192302  | 132A-3000SG     | Line Roller Washer (2 req)    |
| 226     | 1485594  | 226-PURIII8000  | Rear Cover                    |
| 226A    | 1203978  | 22-3000PUR      | Rear Cover Screw              |
| 231     | 1313886  | 231-CFT8000     | Crosswind Gear                |
| 231B    | 1485578  | 231B-PURIII5000 | Screw Crosswind Gear          |
| 233     | 1514979  | 233-WRTH5000    | Lock Knob                     |
| 234     | 1514980  | 234-WRTH5000    | Lock Knob Washer              |

| KEY NO. | PART NO. | PENN STYLE NO. | DESCRIPTION             |
|---------|----------|----------------|-------------------------|
| 1       | 1514986  | 1-WRTH8000     | Housing                 |
| 4       | 1190939  | 4-7000SG       | A/R Dog                 |
| 5       | 1190966  | 5-5000SG       | Dog Spring              |
| 6       | 1190979  | 6-5000SG       | Retaining Clip          |
| 8       | 1514987  | 8-WRTH8000     | Main Gear               |
| 8A      | 1191031  | 8A-7000SG      | Shim                    |
| 8C      | 1485590  | 8C-PURIII8000  | Shim C                  |
| 10      | 1313864  | 10-CFT8000     | A/R Holder              |
| 11      | 1191087  | 11-7000SG      | Bushing                 |
| 12      | 1313865  | 12-CFT8000     | A/R Bushing Spring      |
| 15      | 1514988  | 15-WRTH8000    | Handle Assembly         |
| 19      | 1488473  | 19-PURIII8000  | Pinion Gear             |
| 20      | 1204012  | 20-5000PUR     | Ball Bearing(2 req)     |
| 20B     | 1514989  | 20B-WRTH8000   | Housing Bushing (2 req) |
| 21      | 1192636  | 21-5000SG      | Bearing Retainer        |

407-WRTH8000 Rev. 0 1-17-2019

1514059