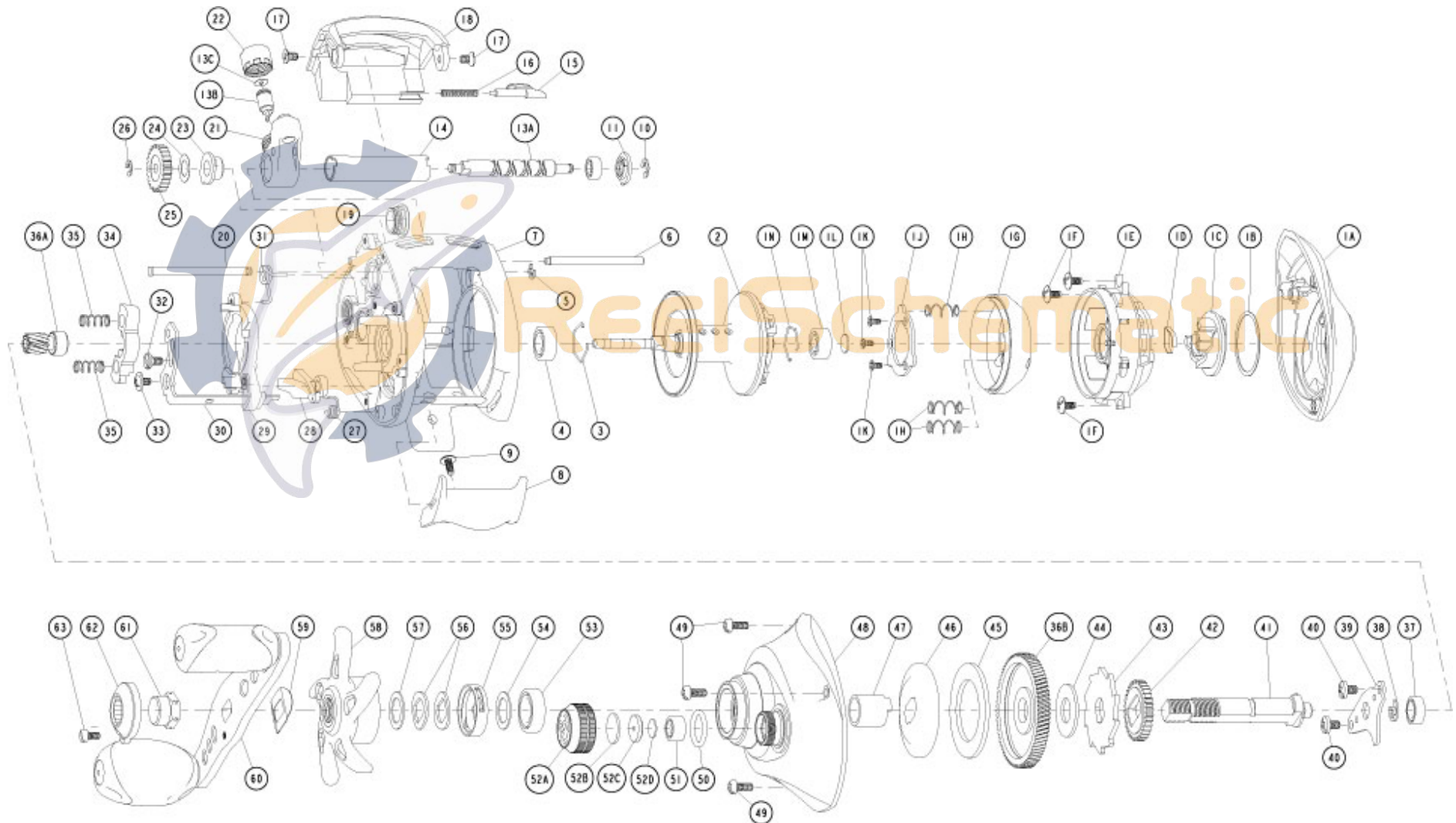


QUANTUM[®]

KT101HPTA





KT101HPTA

Quantum KT101HPTA Bait Cast Reel Part List

| Key # | Description | Qty | Part No. | Key # | Description | Qty | Part No. |
|-------|--|-----|-----------|-------|-----------------------------------|-----|-----------|
| 1 | Palm Side Cover Kit include | 1 | FW4023-06 | 28 | Kick Lever | 1 | FW077-01 |
| | 1A - Palm Side Cover Assembly | 1 | FW323-06 | 29 | Release Slider | 1 | FW039-01 |
| | 1B - Centrifugal Dial Washer | 1 | DW111-01 | 30 | Release Slider Link | 1 | FW036-01 |
| | 1C - Centrifugal Dial Assembly | 1 | FW326-07 | 31 | Release Slider Spring | 1 | FW104-01 |
| | 1D - Centrifugal Dial Spring | 1 | CX108-01 | 32 | Release Slider Link Screw | 1 | EW125-01 |
| | 1E - Spool Cover | 1 | FW051-01 | 33 | Release Slider Screw | 1 | CX076-03 |
| | 1F - Spool Cover Screw | 3 | DW125-01 | 34 | Pinion Yoke | 1 | FW025-01 |
| | 1G - Brake Ring Assembly | 1 | FW342-01 | 35 | Yoke Spring | 2 | GX040-01 |
| | 1H - Brake Ring Slider Spring | 3 | DW070-01 | 36 | Gear Kit Include | 1 | VX4011-02 |
| | 1J - Brake Ring Slider Spring Retainer | 1 | DW129-02 | | 36A - Pinion Gear Assembly | 1 | VX311-02 |
| | 1K - Brake Ring Spring Retainer Screw | 3 | DW107-01 | | 36B - Drive Gear | 1 | VX012-02 |
| | 1L - Spool Tension Shim | 1 | QW032-04 | 37 | Crank Shaft Ball Bearing - L | 1 | SW017-01 |
| | 1M - Spool Shaft Ball Bearing - Palm | 1 | QV017-01 | 38 | E-Clip | 1 | QW120-01 |
| | 1N - Clip Ring | 1 | HV080-01 | 39 | Crank Shaft Retainer | 1 | DW002-01 |
| 2 | Spool Assembly | 1 | EW321-08 | 40 | Crank Shaft Retainer Screw | 2 | JX107-02 |
| 3 | Clip Ring | 1 | EX080-01 | 41 | Crank Shaft | 1 | DW008-06 |
| 4 | Spool Shaft Ball Bearing - Gear | 1 | EX017-02 | 42 | O/S Drive Gear | 1 | DW112-01 |
| 5 | E-Clip | 1 | NX090-01 | 43 | Trip Ratchet | 1 | DW083-02 |
| 6 | Stabilizer Bar - A | 1 | DW061-02 | 44 | Trip Ratchet Washer | 1 | QW111-01 |
| 7 | Frame | 1 | FW001-15 | 45 | Drag Disc | 1 | UX059-01 |
| 8 | Thumb Bar | 1 | FW009-02 | 46 | Drag Washer | 1 | DW045-01 |
| 9 | Thumb Bar Screw | 1 | CW125-01 | 47 | One Way Clutch Sleeve | 1 | UX052-01 |
| 10 | E-Clip | 1 | NX092-01 | 48 | Gear Side Cover Assembly | 1 | FW324-18 |
| 11 | Worm Shaft Bushing | 1 | AB067-01 | 49 | Gear Side Cover Screw | 3 | BV123-03 |
| | | 1 | | 50 | Tension Knob O-Ring | 1 | QW101-01 |
| 13 | Worm Shaft Kit include | 1 | HV4072-01 | 51 | Tension Knob Ball Bearing | 1 | SW117-01 |
| | 13A - Worm Shaft | 1 | HV072-01 | 52 | Spool Tension Knob Kit Include | 1 | DW4033-07 |
| | 13B - Line Guide Pawl | 1 | ZW006-01 | | 52A - Spool Tension Knob Assembly | 1 | DW333-07 |
| | 13C - Line Guide Carrier Washer | 1 | BV035-01 | | 52B - Spool Cushion Washer | 1 | QW082-01 |
| 14 | Worm Shaft Guide | 1 | DW016-02 | | 52C - Spool Tension Collar | 1 | QW081-01 |
| 15 | Side Cover Locking Lever | 1 | TX119-02 | | 52D - Spool Tension Washer | 1 | QW032-04 |
| 16 | Side Cover Locking Lever Spring | 1 | ZW096-01 | 53 | Crank Shaft Ball Bearing | 1 | TW058-01 |
| 17 | Hood Screw | 2 | HX107-02 | 54 | Crank Shaft Ball Bearing Washer | 1 | TW035-02 |
| 18 | Hood | 1 | FW027-07 | 55 | Drag Click Spring Assembly | 1 | YX4114-01 |
| 19 | Oil Cap Screw | 1 | DW150-08 | 56 | Drag "D" Washer | 2 | JX046-01 |
| 20 | Stabilizer Bar - B | 1 | WP061-02 | 57 | Star Drag Washer | 1 | ZW032-01 |
| 21 | Line Guide Carrier | 1 | DW047-04 | 58 | Star Drag | 1 | GW055-01 |
| 22 | Line Guide Carrier Screw | 1 | ZW007-01 | 59 | Handle Washer | 1 | NX054-01 |
| 23 | Worm Shaft Bushing - Gear Side | 1 | DW068-01 | 60 | Handle Assembly | 1 | DW318-21 |
| 24 | O/S Pinion Gear Washer | 1 | EX035-01 | 61 | Handle Nut | 1 | DW003-06 |
| 25 | O/S Pinion Gear | 1 | DW085-01 | 62 | Handle Nut Cap | 1 | DW034-02 |
| 26 | E-Clip | 1 | NX090-01 | 63 | Handle Nut Cap Screw | 1 | DW050-02 |
| 27 | Kick Lever Spring | 1 | MX097-01 | | | | |