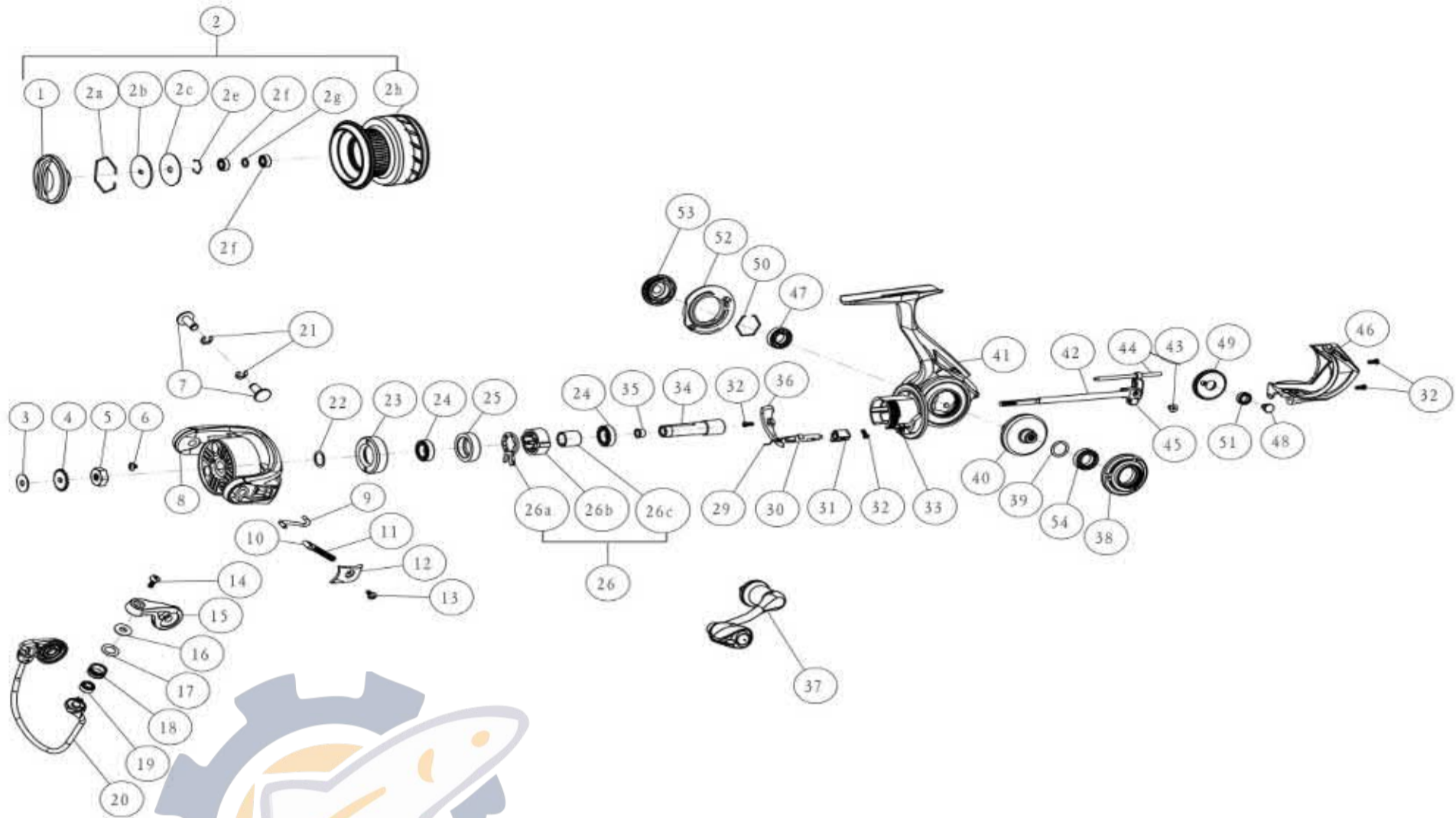


# QUANTUM

## TH10A



Quantum THROTTLE - TH10A Part List

Key No.	Description	Part No.	Qty	Key No.	Description	Part No.	Qty
		TH10				TH10	
1	Drag Knob Assembly	AAA332-02	1	25	Clutch Bearing Adapter	SAD190-01	1
2	Spool Kit Include	SAD421-02	1	26	One way clutch kit include	SAD363-02	1
	2A-Retainer Ring	SAD038-01	1		26A-One Way Clutch lever	BAA064-02	1
	2B-Drag Washer "D"	SAD080-01	1		26B-One Way Clutch	BAA063-02	1
	2C-Drag Washer "B"	SAD035-01	1		26C-Sleeve	SAD139-02	1
	2E-Retainer Ring	AA105-01	1	29	Stopper Cam spring	SAD089-01	1
	2F-Ball Bearing	YAD158-01	1	30	Stopper Cam	SAD090-01	1
	2G-Bushing	SAD076-01	2	31	Stopper Lever	BAA059-01	1
	2H-Spool Assembly	SAD321-02	1	32	Stopper Lever Screw	BAA135-01	4
3	Spool Adjust Washer	SAD039-01	1	33	Clutch spring	BAA216-01	1
4	Clicker Gear	SAD037-01	2	34	Pinion Gear	SAD011-01	1
5	Rotor Nut	SAD006-01	1	35	Pinion Bushing	AA014-01	1
6	Rotor Nut Lock Screw	BAA094-01	1	36	Trip Ramp	SAD119-01	1
7	Pin - Arm Lever / Bail Holder	SAD042-02	1	37	Handle Assembly	NAE318-01	1
8	Rotor	SAD009-02	2	38	Body Side Ring	SAD142-02	1
9	Kick Lever	SAD019-01	1	39	Drive Gear Adjust Washer	TAD105-01	1
10	Actuator	SAD031-01	1	40	Drive Gear Assembly	SAD012-01	1
11	Bail Spring	SAD022-01	1	41	Body Assembly	SAD301-02	1
12	Arm Lever Cover	SAD087-01	1	42	Main Shaft	SAD015-01	1
13	Arm Lever Cover Screw	TAD077-01	1	43	Main Shaft Screw	AA100-01	1
14	Line Roller Screw	BAA108-01	1	44	O/S Guide Pin	SAD093-01	1
15	Arm Lever	SAD007-02	1	45	O/S Slider	SAD025-01	1
16	Line Roller Collar	CAA102-01	1	46	Body Rear Cap	SAD140-02	1
17	Line Roller Washer	BAA102-01	1	47	Body Ball Bearing	TW058-01	1
18	Line Roller	BAA004-01	1	48	O/S Gear Pin	SAD062-02	1
19	Line Roller Ball Bearing	GH202-01	1	49	O/S Gear	SAD053-01	1
20	Bailwire Assembly	SAD347-02	1	50	Retainer Ring	TAD038-01	1
21	"E" clip	AA034-01	1	51	O/S Gear Bearing	YAD158-01	1
22	Rotor Adjust Washer	AAA110-01	2	52	Body Trim Ring	SAD145-02	1
23	Clutch Bearing Cap	SAD040-01	1	53	Handle Cap	TAD054-02	1
24	Pinion Ball Bearing	AAA028-03	1	54	Body Ball Bearing	AAA028-01	1