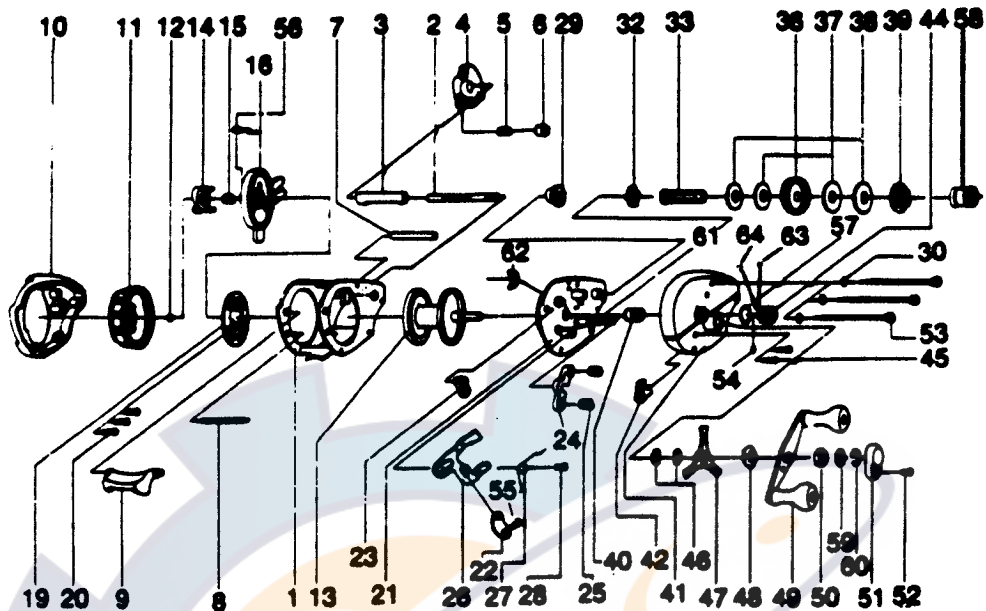


ZEBCO ~~Pro Staff~~™ PS110



KEY PART NO. NO.	DESCRIPTION	PRICE	KEY PART NO. NO.	DESCRIPTION	PRICE
1	GE4051 WRENCH	2.41	36	GE4451 DRIVE GEAR	3.55
2	GE4151 FRAME	7.46	37	GE4459 DRAG WASHER "B"	1.37
3	GE4158 WORM SHAFT	5.73	38	GE4453 DRAG WASHER "D"	1.72
4	GE4301 WORM GEAR GUARD	3.44	39	GE4451 ANTI-REVERSE	1.72
5	GE4302 LINE GUIDE CARRIER ASBY	5.44	40	GE4256 PINION GEAR ASBY	2.64
6	GE4304 LINE GUIDE CARRIER SCR	1.55	41	GE4108 RIGHT SIDE COVER	8.54
7	GE4159 LINE GUIDE CARRIER SCR	1.66	42	GE4452 ANTI-REVERSE PANEL	.85
8	GE4180 CARRIER GUIDE	1.61	44	GE4359 SPOOL TENSION KN. ASBY	1.90
9	GE4404 FRAME FIXED PIN	1.37	45	GE4352 RIGHT SIDE CVR SCR	1.09
10	GE4101 TRUMB BAR	1.95	46	GE4442 SPRING WASHER	1.43
11	GE4303 LEFT SIDE COVER ASBY	7.17	47	GE4443 STAR DRAG	6.59
12	GE4250 CONTROL DIAL ASBY	3.61	48	GE4440 HANDLE WASHER	1.14
13	GE4251 DIAL FRICTION RING	.52	49	GE4701 HANDLE ASBY	5.90
14	GE4261 SPOOL ASBY	10.26	50	GE4702 HANDLE NUT	.92
15	GE4301 MAGNET RETAINER SUPPORT	.88	51	GE4703 HANDLE NUT LOCK	.85
16	GE4108 MAGNET RETAINER SPRING	.80	52	GE4704 HANDLE NUT LOCK SCR	.39
17	GE4108 SPOOL COVER ASBY	3.61	53	GE4104 FRAME SCREW	1.43
18	GE4257 MAGNET PLATE ASBY	11.46	54	GE4302 SPOOL TENSION KN. WREN.(FL)	.46
19	GE4402 MAGNET PLATE SCREEN	1.19	55	GE4806 LINK SCREW	.69
20	GE4351 SET PLATE ASBY	7.46	56	GE4556 CLICK CLAW	.85
21	GE4405 LINK	1.14	57	GE4258 SPOOL TENSION KN. RING	.85
22	GE4405 TRUMB BAR CAM	.92	58	GE4254 RIGHT SIDE CVR BUSHING	2.07
23	GE4406 PINION YOKE	1.09	59	GE4108 SET PLATE SHAFT WREN	.46
24	GE4403 PINION YOKE SPR	.88	60	GE4557 CRANK SHAFT S-CLIP	.46
25	GE4403 RELEASE SLIDER	2.12	61	GE4444 SET PLATE SHAFT	1.14
26	GE4502 SPOOL REL. SPRING	.88	62	GE4444 SHAFT CLIP-S	.46
27	GE4456 RELEASE SLIDER SCREEN	.88	63	GE4308 SPOOL TEN. KN. WREN (RB)	.46
28	GE4150 OSCILLATOR GEAR	2.93	64	GE4304 SPOOL TEN. KN. WREN (SO)	.46
29	GE4109 FRAME SCREW WREN	.46			
30	GE4458 CONTROL ELEMENT	1.14			
31	GE4452 CRANK SHAFT	3.44			

* Note: Parts not used on initial production of reels.
 ** Reels produced prior June 1986 (F6) need to order keys 4-8 as a set.

Prices subject to change without notice. Prices do not include postage and handling.

PLEASE ORDER BY PART NUMBER

Rev. 11/90

Zebco Division Brunswick Corporation, Box 270, Tulsa, OK 74101 USA 918-836-0881

