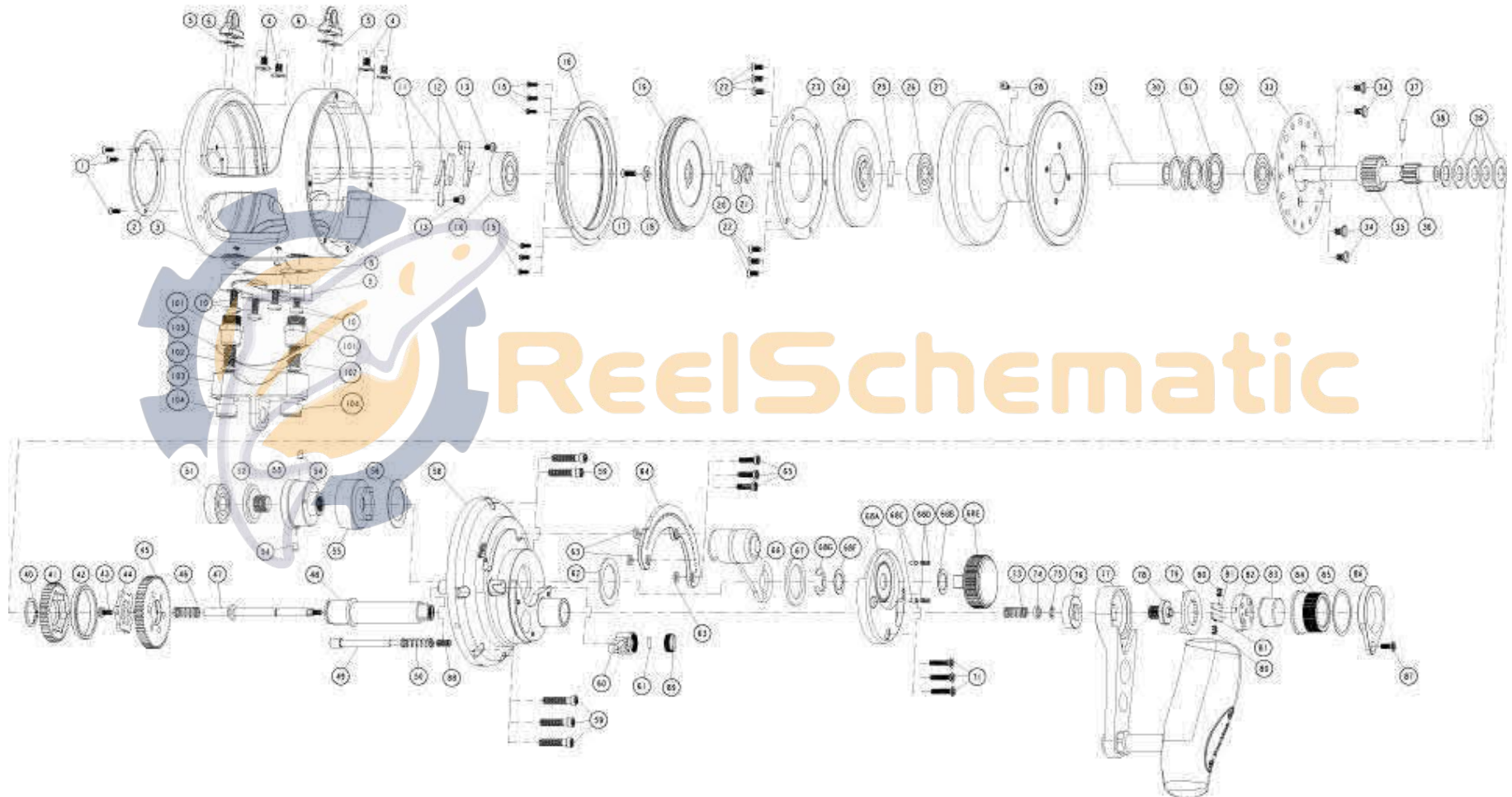


FIN-NOR®

LEGENDARY TACKLE SINCE 1933

Santiago 25

FIN-NOR SA25 2SPEED



FIN-NOR®

LEGENDARY TACKLE SINCE 1933

Santiago 25

Fin_Nor Santiago Trolling Reels - 25

| Key No. | Description | Part No. | Key No. | Description | Part No. |
|---------|--------------------------------|----------|---------|---------------------------------|----------|
| | | 25 | | | 25 |
| 1 | Cosmetic Cover Screw | HX107-03 | 50 | Bait Click Spring | LF110-01 |
| 2 | Cosmetic Cover | LF145-01 | 51 | Ball Bearing | LF017-01 |
| 3 | Frame Assembly | NF301-01 | 52 | Preset Screw | LF019-01 |
| 4 | Harness Lug Screw | JF050-01 | 53 | Cam Follower | LF153-01 |
| 5 | Harness Lug Pad | KF155-01 | 54 | Cam Pin | LF093-01 |
| 6 | Harness Lug | JF151-01 | 55 | Cam | LF028-01 |
| 8 | Reel Foot Gasket | LF155-01 | 56 | Washer | LF035-03 |
| 9 | Reel Foot | LF106-01 | 58 | Gear Side Cover Assembly | NF324-01 |
| 10 | Reel Foot Screw | LF125-01 | 59 | Side Cover Screw | LF053-01 |
| 11 | Anti Reverse Pawl | LF063-01 | 60 | Bait Click Lever | VF109-01 |
| 12 | Anti Reverse Pawl Spring | LF052-01 | 61 | Bait Click Pawl Pin | WF100-01 |
| 13 | Anti Reverse Pawl Screw | LF050-01 | 62 | Drag Lever Washer | LF035-01 |
| 14 | Ball Bearing | MF017-01 | 63 | Quadrant Spacer | MF094-01 |
| 15 | Spool Cover Screw | LF057-01 | 64 | Quadrant | LF152-01 |
| 16 | Spool Cover | LF051-01 | 65 | Quadrant Screw | LF123-01 |
| 17 | Spool Shaft Screw | LF107-02 | 66 | Drag Lever Assy | LF355-01 |
| 18 | Spool Shaft Washer | MF038-01 | 67 | Washer | LF035-02 |
| 19 | Drag Plate Assembly -"B" | LF348-01 | 68 | Front Housing Cover Kit include | LF499-01 |
| 20 | Drag Plate Pin | LF100-01 | | 68A - Front Housing Cover | LF099-01 |
| 21 | Drag Compression Spring | LF040-01 | | 68B - Washer | LF038-01 |
| 22 | Drag Washer Screw | LF107-01 | | 68C - Pre Set Knob Click Pawl | PW098-01 |
| 23 | Drag Washer | LF045-01 | | 68D - Pre Set Knob Click Spring | YW114-01 |
| 24 | Drag Plate Assembly -"A" | MF348-01 | | 68E - Preset Knob | LF029-01 |
| 25 | Drag Plate Pin | LF100-01 | | 68F - Washer | LF038-01 |
| 26 | Ball Bearing | LF017-01 | | 68G - E-Clip | LF092-01 |
| 27 | Spool | NF021-01 | 71 | Front Housing Cover Screw | MF050-01 |
| 28 | Line Ting Screw | NF125-01 | 73 | Link Spring | LF070-01 |
| 29 | Bearing Spacer | MF160-03 | 74 | Link Spring Holder | MF081-01 |
| 30 | Pressure Release Spring | MF040-01 | 75 | E-Clip | QW120-01 |
| 31 | Pressure Release Spring Holder | LF041-01 | 76 | Handle Collar | LF081-01 |
| 32 | Ball Bearing | LF017-01 | 77 | Handle Assembly | LF318-01 |
| 33 | Bait Click Plate | LF113-01 | 78 | Handle Nut | MF003-01 |
| 34 | Bait Click Plate Screw | MF107-01 | 79 | Handle Nut Retainer | LF034-01 |
| 35 | Low Speed Pinion Gear | LF011-01 | 80 | Shift Spring | MF070-01 |
| 36 | Spool Shaft | NF015-01 | 81 | Shift Holder | LF104-01 |
| 37 | Pinion Gear Pin | MF093-01 | 82 | Shift Spring Holder | MF159-01 |
| 38 | Drag Adjusting Washer | LF032-00 | 83 | Shift Button | MF062-01 |
| 39 | Drag Disc Spring | LF046-01 | 84 | Shift Knob | LF158-01 |
| 40 | Retaining Ring | LF075-01 | 85 | Washer | MF035-01 |
| 41 | Low Speed Drive Gear | MF012-01 | 86 | Shift Knob Holder | LF159-01 |
| 42 | Gear Spacer | LF160-01 | 87 | Shift Knob Holder Screw | MF076-01 |
| 43 | Link Retainer Screw | MF053-01 | 88 | Bait Click Lever Spring | JF071-01 |
| 44 | Link | LF036-01 | 89 | Bait Click Lever Cap | VF115-01 |
| 45 | High Speed Drive Gear | DF012-01 | 101 | Rod Clamp Nut | LF003-01 |
| 46 | Link Spring | LF070-01 | 102 | O-Ring | LF101-01 |
| 47 | Link Shaft | LF146-01 | 103 | Rod Clamp | LF154-01 |
| 48 | Crank Shaft | LF008-01 | 104 | Rod Clamp Bolt | MF125-01 |
| 49 | Bait Click Pawl | LF114-01 | 105 | Rod Clamp Pad | MF155-01 |