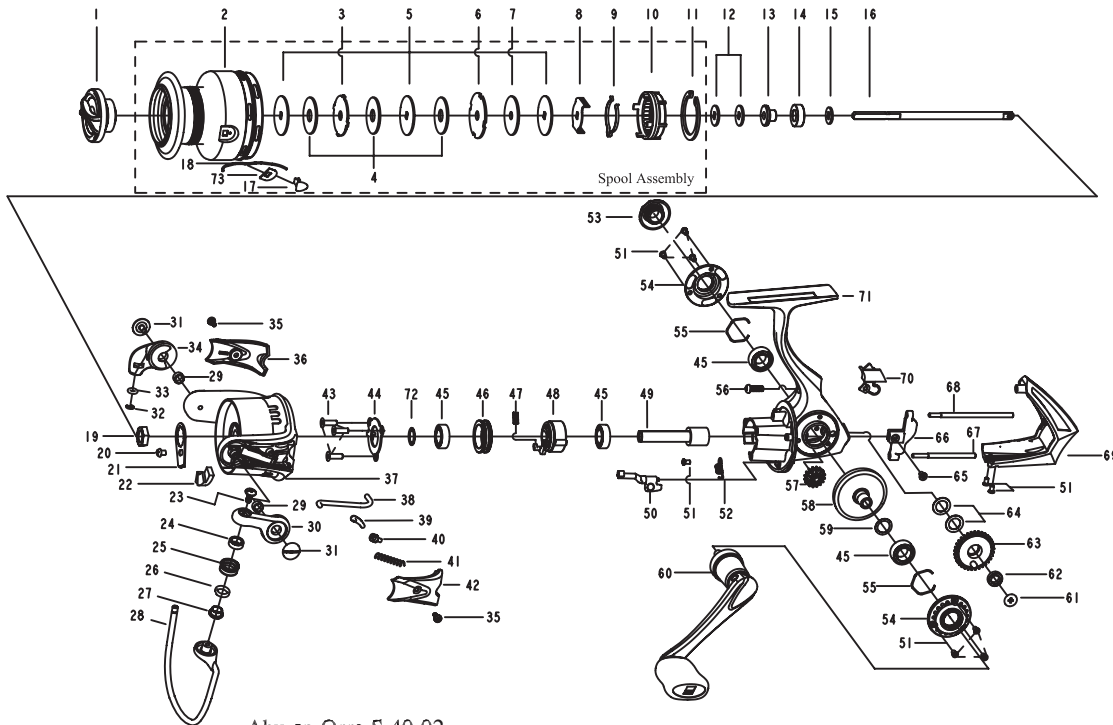




# ORRA S 40



Abu-sp-Orra S-40-02



# PARTS LIST OF ORRA S 40

ITEM#	DESCRIPTION	ORRA S 40	ITEM#	DESCRIPTION	ORRA S 40
1	Drag Knob Assembly	1252686	36	Bail Holder Cover	1253714
	Spool Assembly	1253707	37	Rotor	1253715
	Spare Spool Assembly	1253708	38	Trip Bar	1253716
2	Spool	1253709	39	Trip Linkage	1252713
2	Spare Spool	1253710	40	Trip Bushing	1126272
3	Eared washer	1126337	41	Trip Spring	1253696
4	Felt washer	1252751	42	Bail Arm Cover	1253717
5	Keyed washer	1126304	43	Screw	1126326
6	Spool Washer	1126307	44	Pinion Cover	1252715
7	Carbon Washer	1126305	45	Bearing 7X13X4	1252717
8	Clicker holder	1252692	46	Bearing Holder	1252718
9	Spool Clicker	1252693	47	Clutch Spring	1252716
10	Spool Bottom	1252695	48	Clutch Assembly	1252719
11	Retaining Clip	1252697	49	Pinion	1252720
12	Spool shim thick T=0.5	1178953	50	Clutch Switch	1252721
12	Spool shim thin T=0.3	1178954	51	Screw	1252723
13	Mainshaft sleeve	1252698	52	Clutch Switch Spring	1252722
14	Bearing 6X12X4	1252699	53	Dust Cap	1252738
15	Mainshaft washer	1252700	54	Body Trim	1252727
16	Mainshaft	1253711	55	C-Clip	1252726
17	Line clip	1252739	56	Screw	1085342
18	Line clip spring	1252740	57	Reduction Gear	1252732
19	Rotor Nut	1085273	58	Drive Gear	1252725
20	Rotor Set Screw	1126258	59	Shim	1085287
21	Rotor Set Plate	1252702	60	Handle Assembly	1253719
22	Balance Weight	1253712	61	Screw	1252729
23	Line Roller Screw	1126261	62	Bushing	1108938
24	Bearing 5X8X2.5	1112125	63	Oscillation Gear	1253720
25	Line Roller	1252705	64	Washer	1253702
26	Pom bushing	1252756	65	Screw	1126275
27	Brass bushing	1252755	66	Oscillation Slider	1253721
28	Bail Assembly	1253713	67	Oscillation Guide	1252733
29	Bushing	1188261	68	Oscillation Guide	1253722
30	Bail Arm	1252754	69	Body Cover	1253723
31	Bail Arm Screw	1126379	70	Oscillation Cover	1253718
32	E-clip	1252707	71	Gearbox	1253724
33	O-ring	1252708	72	Rotor Washer	1114764
34	Bail Holder	1252709	73	Line Clip Washer	1259476
35	Screw	1125962			