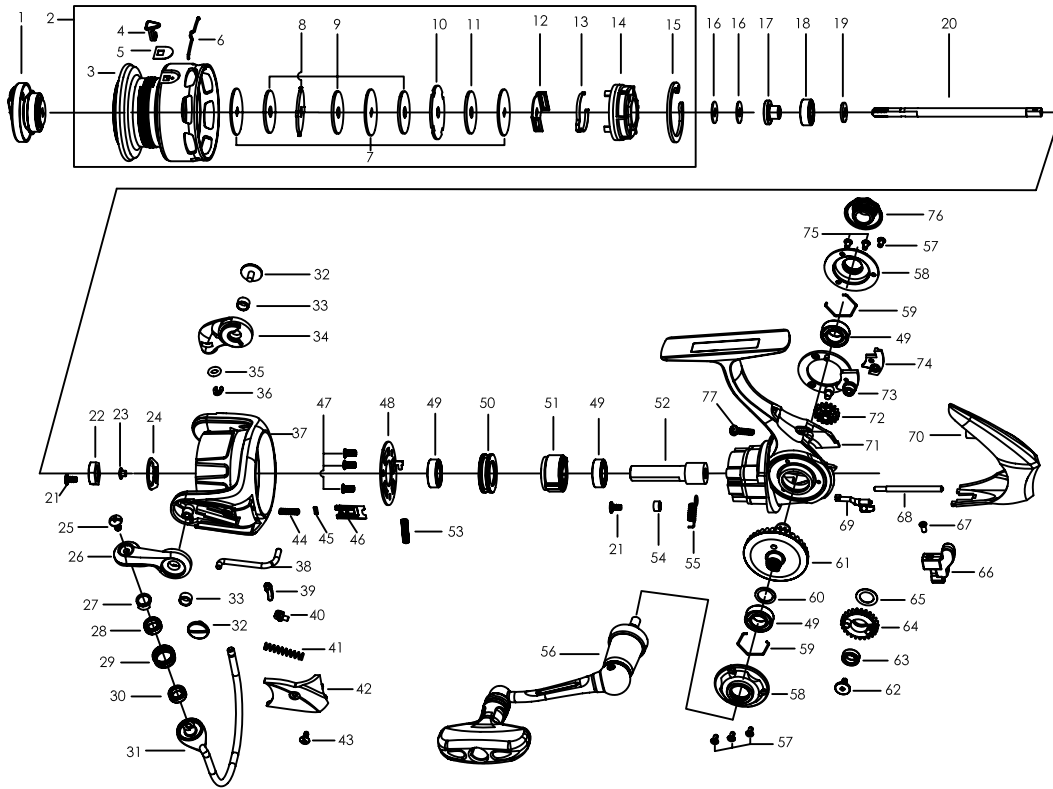




# ORRA2 S 40



## PARTS LIST OF ORRA2 S 40

ITEM#	PARTS DESCRIPTION	S40	ITEM#	PARTS DESCRIPTION	S40
1	Drag Knob Assembly	1252686	40	Trip Bushing	1126272
2	Spool Assembly	1347964	41	Trip Spring	1119106
3	Spool	1347965	42	Bail Arm Cover	1347980
4	Line Clip	1252739	43	Screw	1346956
5	Line Clip Shim	1259476	44	Spring	1346982
6	Line Clip Spring	1257318	45	O-Ring	1206550
7	Keyed Washer(3req)	1252691	46	Damper Holder	1346983
8	Spool Washer	1126369	47	Screw(3req)	1126326
9	Felt Washer(3req)	1085298	48	Pinion Cover	1346984
10	Spool Washer	1256940	49	Bearing 7X13X4(4req)	1252717
11	Carbon Washer	1126368	50	Bearing Holder	1252718
12	Clicker Holder	1257317	51	Clutch Assembly	1252719
13	Spool Clicker	1256941	52	Pinion	1347981
14	Spool Bottom	1252694	53	Clutch Spring	1252716
15	Retaining Clip	1252696	54	POM Bushing	1279733
16	Spool Shim Thick(2req)	1178953	55	Clutch Switch Spring	1252722
17	Main Shaft Sleeve	1252698	56	Handle Assembly	1347982
18	Plastic Bushing	1252753	57	Screw(4req)	1125961
19	Main Shaft Washer	1252700	58	Body Trim(2req)	1346962
20	Main Shaft	1347966	59	C-Clip(2req)	1252726
21	Rotor Set Screw(2req)	1126258	60	Shim	1347983
22	Rotor Nut	1259462	61	Drive Gear	1346963
23	POM Bushing	1259463	62	Screw	1126275
24	Rotor Set Plate	1346951	63	Bushing	1108938
25	Line Roller Screw	1126261	64	Oscillation Gear	1347984
26	Bail Arm	1252704	65	Washer	1253702
27	Bushing	1252755	66	Oscillation Slider	1347985
28	Ball Bearing	1112125	67	Screw	1126275
29	Line Roller	1252705	68	Oscillation Guide	1346965
30	POM Bushing	1252756	69	Clutch Switch	1252721
31	Bail Assembly	1347967	70	Body Cover	1347986
32	Bail Arm Screw(2req)	1126379	71	Gear Box	1347987
33	Bushing(2req)	1188261	72	Reduction Gear	1346968
34	Bail Holder	1252709	73	Gear Holder	1347988
35	O-Ring	1252708	74	Oscillation Cover	1347989
36	E-Clip	1252707	75	Screw(2req)	1126084
37	Rotor	1347968	76	Dust Cap	1252738
38	Trip Bar	1347979	77	Screw	1085599
39	Trip Linkage	1252713			