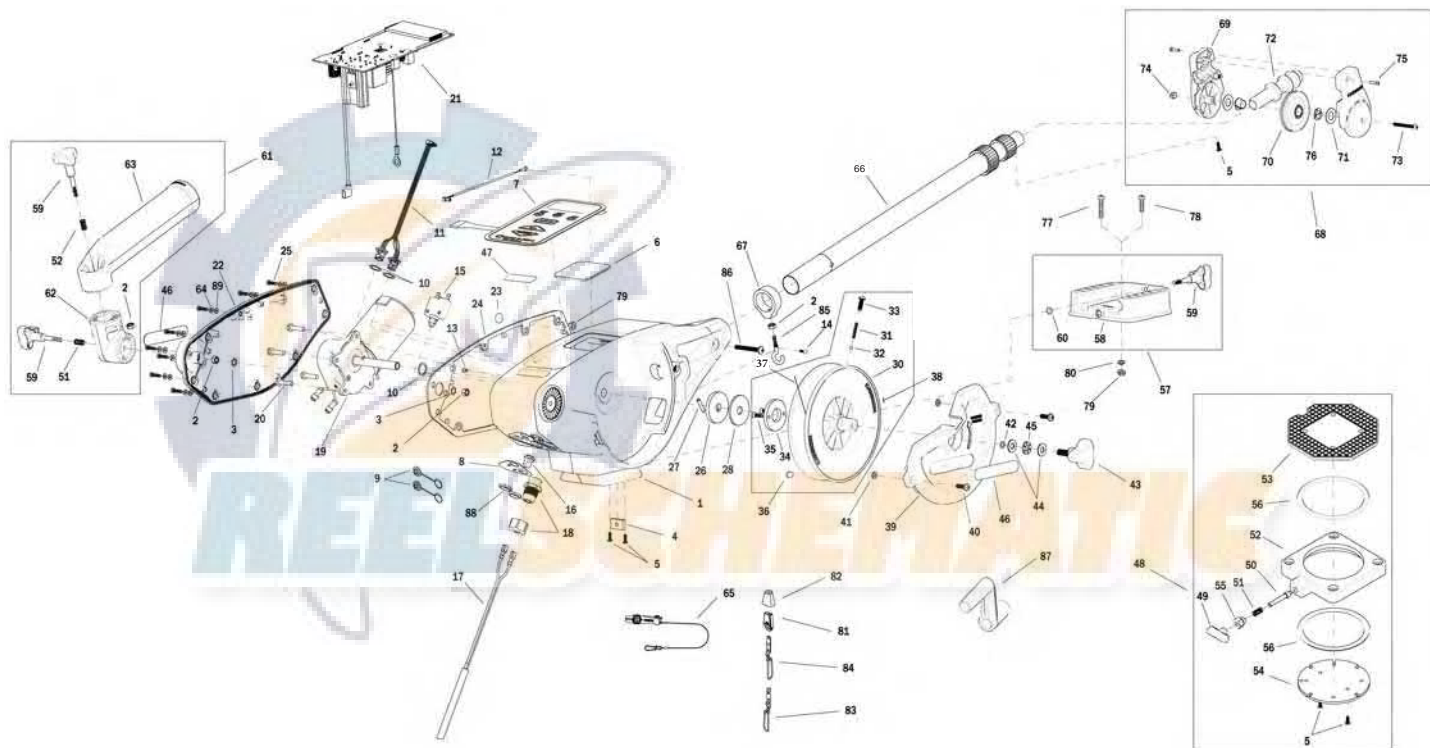


1902315 Digi-Troll 5



1902315 Digi-Troll 5

1	3392524	FRAME, RAW	31	3392707	SPRING, REEL	61	3991904	ASSY-CNN, ROD HOLDER
2	2263102	NUT-HEX 1/4-20 SS 300SRS	32	3396020	BALL BEARING, REEL	62	3394200	ARM, DUAL AXIS-ROD HOLDER
3	3394722	INSERT, PUSH ON	33	3393474	SCREW-DRIVE #14 X .75" SS	63	3392033	TUBE, DUAL AXIS RD HLDR
4	3394702	INSERT, BASE	34	3391906	PLATE, CLUTCH REEL	64	3394602	WASHER, FLAT #8, SS
5	2373450	SCREW-#8-18 X 3/8 THD* (SS)	35	3393418	SCREW-#10-16X.75"HI-LO SS	65	2277002	ASY HDW RELEASE UNIVERSAL
6	3396510	LENS-WINDOW MAG DTIV	36	1459666	CERAMIC MAGNET P/N 42-B-5020	66	2210821	ASY BOOM TELESCOPIC
7	3394015	KEYPAD, DIGI-TROLL 5	37	3775397	400' CABLE	67	3397900	BALL HOOK EXTRUSION
8	3396602	SEAL PLATE, DT5	38	9100070	CON LEADER SLEEVE	68	3990200	ASSY-CNN, BOOM END
9	700176	CON XCAP MINI-CON PANEL MOUNT	39	3390205	COVER, REEL	69	3392520	CASE, PULLEY
10	3391730	WASHER, SEAL, DATA	40	2373434	SCREW-1/4-20 X 3/4 SS PPMS	70	3392300	SHEEVE, PULLEY
11	3391220	HARNES, COMM	41	2071718	WASHER #10 NYLON RETAINING	71	3391507	SHIM, BOOM END
12	3391223	HARNES, RF ANTENNA	42	3394605	O-RING, KNOB	72	3392013	BOOM END, NEW
13	1234002	HDW INSERT SS PRESS 1/4IN	43	3390103	KNOB, SOFT GRIP, CLUTCH	73	3393485	SCREW-#10-24X1.75 PPHMS S
14	3393426	SCREW-#6-32x3/8,TRIM'D HEX CAP	44	3391737	HDW WASHER, THRUST	74	3393124	NUT-#10-32 NYLOK 18-8 SS
15	3398205	CIRCUIT BREAKER, 25 AMP	45	9010280	HDW BEARING, THRUST	75	2303412	SCREW-#6-20 X 5/8 SELF TAP
16	1221491	BOOT CIRCUIT BREAKER	46	3395634	DECAL- SIDE, BLACK	76	3390005	BEARING-NYLINER, #8L5-1/2-F
17	3993220	ASSY, POWER CABLE, RETRO	47	3395710	DECAL-PIC BLACK	77	9280720	HDW SCR 1/4 20X2 TRUSS HD PHIL
18	3392920	STRAIN-RELIEF, HEYCO M4502	48	2998905	CNN ASY, SWIVEL BASE	78	9280713	HDW SCR 1/4 20X1 1/2 TRUSS HEA
19	3996515	MOTOR/GEAR HOUSING ASSY	49	2249001	HDW KNB RELEASE PIN	79	2263103	NUT-1/4-20 NYLOCK SS
20	3393411	SCREW-FLANGE HEX HI-LO	50	3392600	PIN - RELEASE	80	2371712	WASHER-FLAT 9/32 X 5/8 X 1/16
21	3394007	ASY PCA,DIGI-TRLL 5,5TS	51	2287002	HDW SPRING RELEASE PIN	81	9100100	CON TERMINATOR
22	3390203	COVER, MOTOR	52	2267001	ASY PLATE BASE MACHINED	82	9100101	CUSHION SLEEVE TERMINATOR
23	401966-3	MIC VENT,PTFE LU LRA MATERIAL	53	2267002	BRK PLATE SWIVEL	83	9100620	HDW SNAP SWIVEL 4/0-37 MARLIN
24	3396902	GASKET, COVER	54	3391919	PLATE, INDEX TS	84	2200148	ASY SNAP & INSULATOR
25	3393480	SCREW-#10X.75"PPH HI-LO SS	55	2277001	HDW RETAINER RELEASE NUT	85	9040040	HDW BOLT 1/4-20 ROLLEDTHD HOOK
26	3391907	PLATE, CLUTCH SHAFT	56	9010004	HDW BEARING SWIVEL BASE	86	3393461	SCREW-1/4-20 x 2" SS, PPH
27	3392640	PIN, DRIVESHAFT	57	3991930	ASY, MNT BASE DT/MAG	87	3390910	HANDLE-CRANK, MANUAL
28	3391711	PAD, CLUTCH	58	3391955	BASE-MOUNT, DT PRO/MAG ST	88	3393113	NUT, HEX, MINI-CON-X
30	3777927	REEL, ROUGH, 3.75" OD	59	3390101	KNOB-CANNON, SOFT GRIP	89	3391732	WASHER, SEALING
			60	3393000	RING, RETAINING, 1/4" SHAFT			

Digi-Troll 5 Series Wiring Diagram

