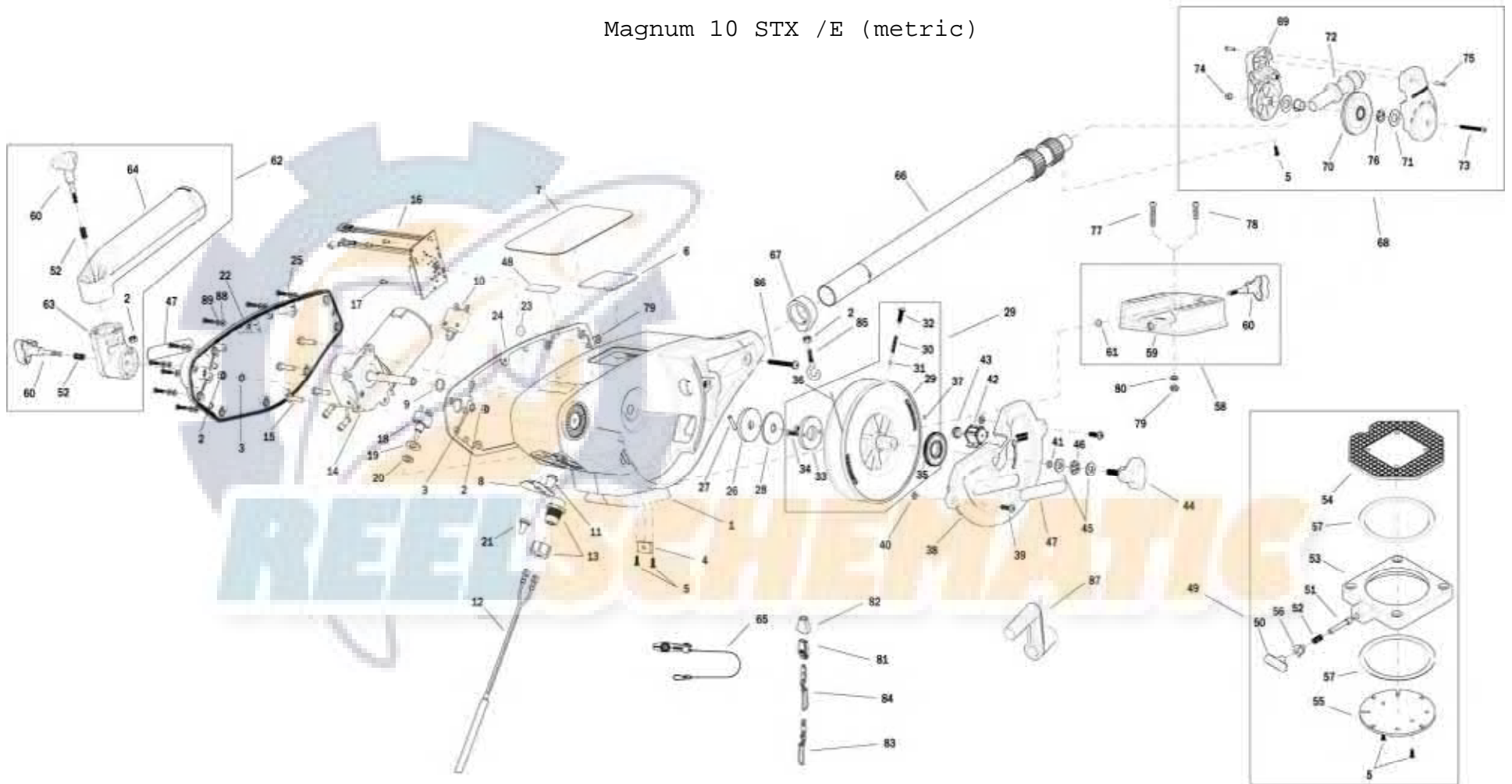


Magnum 10 STX /E (metric)



1902306 Magnum 10 STX /E

1	3392524	FRAME, RAW	31	3396020	BALL BEARING, REEL	61	3393000	RING, RETAINING, 1/4" SHAFT
2	2263102	NUT-HEX 1/4-20 SS 300SR5	32	3393474	SCREW-DRIVE #14 X .75" SS	62	3991904	ASSY-CNN, ROD HOLDER
3	3394722	INSERT, PUSH ON	33	3391906	PLATE, CLUTCH REEL	63	3394200	ARM, DUAL AXIS-ROD HOLDER
4	3394702	INSERT, BASE	34	3393418	SCREW-#10-16X.75"HI-LO SS	64	3392033	TUBE, DUAL AXIS RD HLDR
5	2373450	SCREW-#8-18 X 3/8 THD* (SS)	35	3333011	GEAR REEL (METRIC)	65	2277002	ASY HDW RELEASE UNIVERSAL
6	3396510	LENS-WINDOW MAG DTIV	36	3775397	400' CABLE	66	2210821	ASY BOOM TELESCOPIC
7	3395580	DECAL, MAG 10	37	9100070	CON LEADER SLEEVE	67	3397900	BALL HOOK EXTRUSION
8	3396601	SEAL PLATE, MAGNUM	38	3390205	COVER, REEL	68	3990200	ASSY-CNN, BOOM END (SUB)
9	3391730	WASHER, SEAL, DATA	39	2373434	SCREW-1/4-20 X 3/4 SS PPMS	69	3392520	CASE, PULLEY
10	3398205	CIRCUIT BREAKER, 25 AMP	40	2071718	WASHER #10 NYLON RETAINING	70	3392300	SHEEVE, PULLEY
11	1221491	BOOT CIRCUIT BREAKER	41	3394605	O-RING, KNOB	71	3391507	SHIM, BOOM END
12	3993220	ASSY, POWER CABLE, RETRO(SUB)	42	3320011	COUNTER 3 DIGIT (METRIC)	72	3392013	BOOM END, NEW
13	3392920	STRAIN-RELIEF, HEYCO M4502	43	3333010	GEAR COUNTER (METRIC)	73	3393485	SCREW-#10-24X1.75 PPHMS S
14	3396515	MOTOR/GEAR HOUSING ASSY	44	3390103	KNOB, SOFT GRIP, CLUTCH	74	3393124	NUT-#10-32 NYLOK 18-8 SS
15	3393411	SCREW-FLANGE HEX HI-LO	45	3391737	HDW WASHER, THRUST	75	2303412	SCREW-#6-20 X 5/8 SELF TAP
16	3394006	ASY PCA, MAGNUM	46	9010280	HDW BEARING, THRUST	76	3390005	BEARING-NYLINER, #8L5-1/2-F
17	2302104	SCREW-#6-20 X 3/8	47	3395634	DECAL- SIDE, BLACK	77	9280720	HDW SCR 1/4 20X2 TRUSS HD PHIL
18	2286792	SWITCH, TOGGLE	48	3395710	DECAL-PIC BLACK	78	9280713	HDW SCR 1/4 20X1 1/2 TRUSS HEA
19	3391722	WASHER, FLAT	49	2998905	CNN ASY, SWIVEL BASE	79	2263103	NUT-1/4-20 NYLOCK SS
20	2286793	HDW SHIM SWITCH .75X.1	50	2249001	HDW KNB RELEASE PIN	80	2371712	WASHER-FLAT 9/32 X 5/8 X 1/16
21	1221490	BOOT SWITCH	51	3392600	PIN - RELEASE	81	9100100	CON TERMINATOR
22	3390203	COVER, MOTOR	52	2287002	HDW SPRING RELEASE PIN	82	9100101	CUSHION SLEEVE TERMINATOR
23	401966-3	MIC VENT,PTFE LU LRA MATERIAL	53	2267001	ASY PLATE BASE MACHINED	83	9100620	HDW SNAP SWIVEL 4/0-37 MARLIN
24	3396902	GASKET, COVER	54	2267002	BRK PLATE SWIVEL	84	2200148	ASY SNAP & INSULATOR
25	3393480	SCREW-#10X.75"PPH HI-LO SS	55	3391919	PLATE, INDEX TS	85	9040040	HDW BOLT 1/4-20 ROLLEDTHD HOOK
26	3391907	PLATE, CLUTCH SHAFT	56	2277001	HDW RETAINER RELEASE NUT	86	3393461	SCREW-1/4-20 x 2" SS, PPH
27	3392640	PIN, DRIVESHAFT	57	9010004	HDW BEARING SWIVEL BASE	87	3390910	HANDLE-CRANK, MANUAL
28	3391711	PAD, CLUTCH	58	3991930	ASY, MNT BASE DT/MAG(SUB)	88	3391732	WASHER, SEALING
29	3777927	REEL, ROUGH, 3.75" OD	59	3391955	BASE-MOUNT, DT PRO/MAG ST	89	3394602	WASHER, FLAT, #8, SS
30	3392707	SPRING, REEL	60	3390101	KNOB-CANNON, SOFT GRIP			

# Magnum Series Wiring Diagram

NOTE:  
ORIENT TOGGLE  
SWITCH WITH  
THE PURPLE  
WIRE DOWN.

