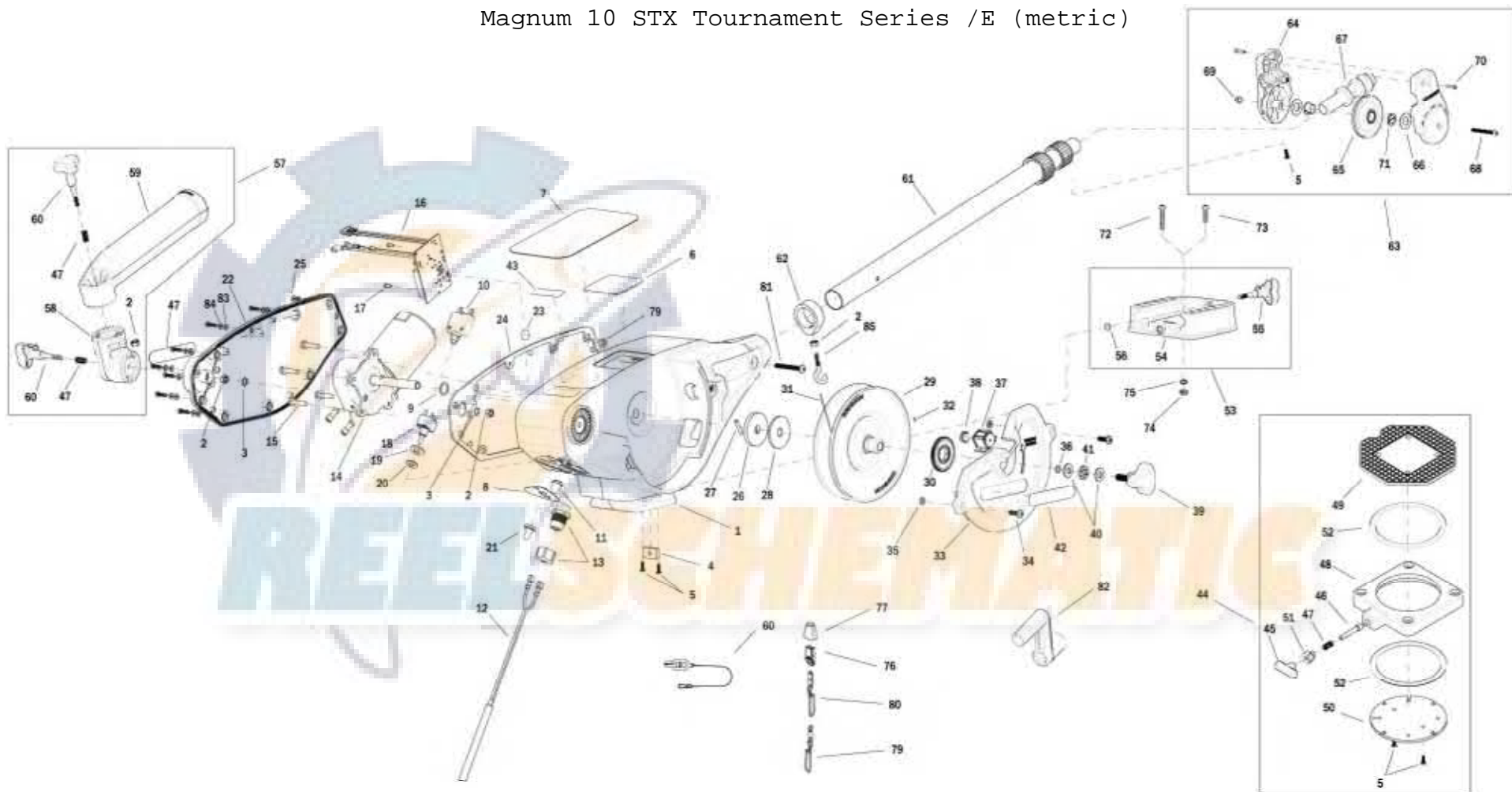


Magnum 10 STX Tournament Series /E (metric)



1902311 Magnum 10 STX TS /E

| | | | | | | | | |
|----|----------|-------------------------------|----|---------|-----------------------------|----|---------|--------------------------------|
| 1 | 3392525 | FRAME, RAW, TS | 29 | 3777927 | REEL, ROUGH, 3.75" OD | 57 | 3991904 | ASSY-CNN, ROD HOLDER |
| 2 | 2263102 | NUT-HEX 1/4-20 SS 300SRS | 30 | 3333011 | GEAR REEL (METRIC) | 58 | 3394200 | ARM, DUAL AXIS-ROD HOLDER |
| 3 | 3394722 | INSERT, PUSH ON | 31 | 1015391 | WIRE, .034 DIA, CAMEO BULK | 59 | 3392033 | TUBE, DUAL AXIS RD HLDR |
| 4 | 3394702 | INSERT, BASE | 32 | 9100070 | CON LEADER SLEEVE | 60 | 3390101 | KNOB-CANNON, SOFT GRIP |
| 5 | 2373450 | SCREW-#8-18 X 3/8 THD* (SS) | 33 | 3390206 | COVER, REEL, TS | 61 | 3392010 | ASY BOOM TELESCOPIC, SS |
| 6 | 3396510 | LENS-WINDOW MAG DTIV | 34 | 2373434 | SCREW-1/4-20 X 3/4 SS PPMs | 62 | 3397900 | BALL HOOK EXTRUSION |
| 7 | 3395581 | DECAL, MAG 10, TS | 35 | 2071718 | WASHER #10 NYLON RETAINING | 63 | 3990200 | ASSY-CNN, BOOM END (SUB) |
| 8 | 3396601 | SEAL PLATE, MAGNUM | 36 | 3394605 | O-RING, KNOB | 64 | 3392520 | CASE, PULLEY |
| 9 | 3391730 | WASHER, SEAL, DATA | 37 | 3320011 | COUNTER 3 DIGIT (METRIC) | 65 | 3392300 | SHEEVE, PULLEY |
| 10 | 3398205 | CIRCUIT BREAKER, 25 AMP | 38 | 3333010 | GEAR COUNTER (METRIC) | 66 | 3391507 | SHIM, BOOM END |
| 11 | 1221491 | BOOT CIRCUIT BREAKER | 39 | 3390103 | KNOB, SOFT GRIP, CLUTCH | 67 | 3392013 | BOOM END, NEW |
| 12 | 3993220 | ASSY, POWER CABLE, RETRO(SUB) | 40 | 3391737 | HDW WASHER, THRUST | 68 | 3393485 | SCREW-#10-24X1.75 PPHMS S |
| 13 | 3392920 | STRAIN-RELIEF, HEYCO M4502 | 41 | 9010280 | HDW BEARING, THRUST | 69 | 3393124 | NUT-#10-32 NYLOCK 18-8 SS |
| 14 | 3996515 | MOTOR/GEAR HOUSING ASSY | 42 | 3395634 | DECAL- SIDE, BLACK | 70 | 2303412 | SCREW-#6-20 X 5/8 SELF TAP |
| 15 | 3393411 | SCREW-FLANGE HEX HI-LO | 43 | 3395711 | DECAL-PIC BLACK, TS | 71 | 3390005 | BEARING-NYLINER, #8L5-1/2-F |
| 16 | 3394006 | ASY PCA, MAGNUM | 44 | 2998905 | CNN ASY, SWIVEL BASE | 72 | 9280720 | HDW SCR 1/4 20X2 TRUSS HD PHIL |
| 17 | 2302104 | SCREW-#6-20 X 3/8 | 45 | 2249001 | HDW KNB RELEASE PIN | 73 | 9280713 | HDW SCR 1/4 20X1 1/2 TRUSS HEA |
| 18 | 2286792 | SWITCH, TOGGLE | 46 | 3392600 | PIN - RELEASE | 74 | 2263103 | NUT-1/4-20 NYLOCK SS |
| 19 | 3391722 | WASHER, FLAT | 47 | 2287002 | HDW SPRING RELEASE PIN | 75 | 2371712 | WASHER-FLAT 9/32 X 5/8 X 1/16 |
| 20 | 2286793 | HDW SHIM SWITCH .75X.1 | 48 | 2267001 | ASY PLATE BASE MACHINED | 76 | 9100100 | CON TERMINATOR |
| 21 | 1221490 | BOOT SWITCH | 49 | 2267002 | BRK PLATE SWIVEL | 77 | 9100101 | CUSHION SLEEVE TERMINATOR |
| 22 | 3390204 | COVER, MOTOR, TS | 50 | 3391919 | PLATE, INDEX TS | 78 | 9100620 | HDW SNAP SWIVEL 4/0-37 MARLIN |
| 23 | 401966-3 | MIC VENT,PTFE LU LRA MATERIAL | 51 | 2277001 | HDW RETAINER RELEASE NUT | 79 | 2200148 | ASY SNAP & INSULATOR |
| 24 | 3396902 | GASKET, COVER | 52 | 9010004 | HDW BEARING SWIVEL BASE | 80 | 9040040 | HDW BOLT 1/4-20 ROLLEDTHD HOOK |
| 25 | 3393480 | SCREW-#10X.75"PPH HI-LO SS | 53 | 3991930 | ASY, MNT BASE DT/MAG(SUB) | 81 | 3393461 | SCREW-1/4-20 x 2" SS, PPH |
| 26 | 3391907 | PLATE, CLUTCH SHAFT | 54 | 3391955 | BASE-MOUNT, DT PRO/MAG ST | 82 | 3390910 | HANDLE-CRANK, MANUAL |
| 27 | 3392640 | PIN, DRIVESHAFT | 55 | 3390101 | KNOB-CANNON, SOFT GRIP | 83 | 3391732 | WASHER, SEALING |
| 28 | 3391711 | PAD, CLUTCH | 56 | 3393000 | RING, RETAINING, 1/4" SHAFT | 84 | 3394602 | WASHER, FLAT, #8, SS |

Magnum Series Wiring Diagram

NOTE:
ORIENT TOGGLE
SWITCH WITH
THE PURPLE
WIRE DOWN.

