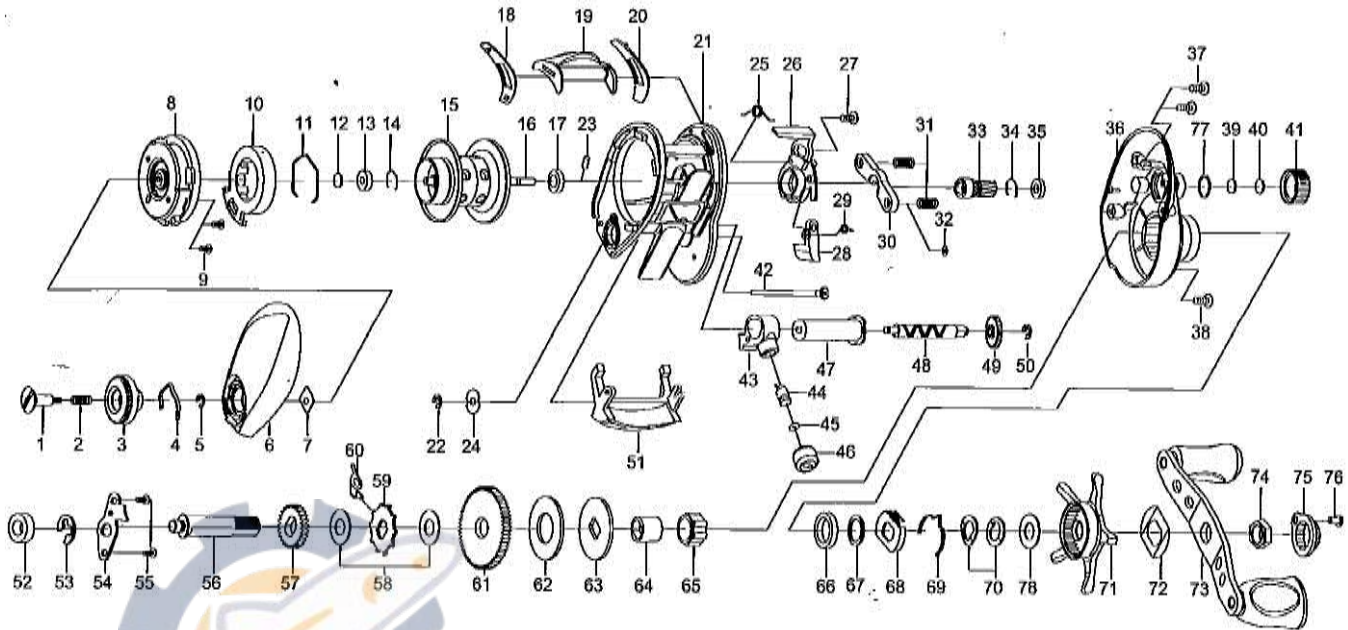


Please order by parts number, not key number
 Veuillez indiquer le numéro de la pièce (Non "Key" No.)



BAITCASTING REEL

AIRD 100H/100HS/100P



KEY NO.	PART NO.	PART NAME
1	460-5410	SET PLATE SCREW(S)
2	510-4450	SET PLATE SPRING
3	550-1610	BRAKE ADJUST KNOB(S)
4	510-5060	BRAKE CLICK SPRING
5	200-0530	BRAKE DIAL RETAINER(A)
6	230-2270	LEFT SIDE PLATE
7	410-1911	BRAKE DIAL RETAINER(B)
8	220-2931	SET PLATE
9	460-3220	SCREW
10	240-1952	MAGNET HOLDER
11	430-1070	MAGNET HOLDER RET. RING
12	540-5990	SPACER(A)
13	140-1650	BALL BEARING(A)
14	430-1061	BEARING RETAINER
17	140-0090	BALL BEARING(E)
15-17, 23	700-9480	SPOOL ASSEMBLY
18	410-2150	SPACER(B)
19	090-0260	CLUTCH LEVER
20	410-2140	SPACER(C)
21	110-1010	FRAME ASSEMBLY
22	200-0530	WORM SHAFT RETAINER
23	400-2250	SPOOL PIN
24	540-6060	WORM SHAFT WASHER
25	510-5040	CLUTCH CAM SPRING(A)
26	170-1280	CLUTCH CAM
27	460-5440	SCREW
28	330-2820	CLUTCH TRIP PLATE
29	510-5050	CLUTCH CAM SPRING(B)
30	410-1890	YOKE
31	510-4430	YOKE SPRING
32	540-6020	WASHER(B)
33	260-1670	PINION GEAR
34	430-1061	BEARING RETAINER
35	150-3020	BUSH
36	230-2260	RIGHT SIDE PLATE
37	460-1570	SCREW
38	460-5450	SCREW
39	540-6850	SPACER(D)
40	540-4340	SPACER(E)
41	380-1660	CAST CONTROL CAP(S)
42	400-2531	LONG SCREW
43	490-1080	LINE GUIDE
44	400-2540	LINE GUIDE PAWL
45	540-3980	WASHER(C)
46	380-0780	LINE PAWL CAP

KEY NO.	PART NO.	PART NAME
47	270-0720	LEVEL WIND GUIDE
48	470-1900	WORM SHAFT
49	240-2180	WORM SHAFT GEAR
50	200-0530	GEAR RETAINER
51	550-1600	FRAME PLATE
52	140-1850	BALL BEARING(C)
53	200-0580	DRIVE GEAR SHAFT RETAINER(B)
54	410-2210	DRIVE GEAR SHAFT RETAINER(A)
55	460-3850	SCREW
56	470-1930	DRIVE SHAFT
57	240-2190	OSCILATING GEAR
58	540-6840	SPACER(F)
59	240-2530	ANTI-REVERSE RATCHET
60	530-0840	ANTI-REVERSE PAWL
61	250-1321	DRIVE GEAR(H)
62	540-6880	DRAG WASHER
63	540-6910	KEY WASHER
64	150-2180	GEAR SHAFT COLLAR
65	140-1810	ROLLER CLUTCH
66	140-0610	BALL BEARING(D)
67	540-1570	SPACING WASHER
68	410-2220	PLATE
69	510-4760	LEAF SPRING(A)
70	540-6390	DRAG SPRING WASHER
71	320-1190	STAR DRAG
72	510-3260	LEAF SPRING(B)
73	700-8420	HANDLE ASSEMBLY
74	380-0770	HANDLE NUT
75	180-2470	HANDLE NUT PLATE
76	460-0450	SCREW
77	430-1080	D-RING
78	540-9020	WASHER(D)

AIRD 100HS-SPECIAL PARTS		
KEY NO.	PART NO.	PART NAME
33	260-1680	PINION GEAR
36	230-2261	RIGHT SIDE PLATE(A)
61	250-1321	DRIVE GEAR(H)

AIRD 100P-SPECIAL PARTS		
KEY NO.	PART NO.	PART NAME
33	260-1720	PINION GEAR
36	230-2260	RIGHT SIDE PLATE(A)
61	250-1321	DRIVE GEAR(P)