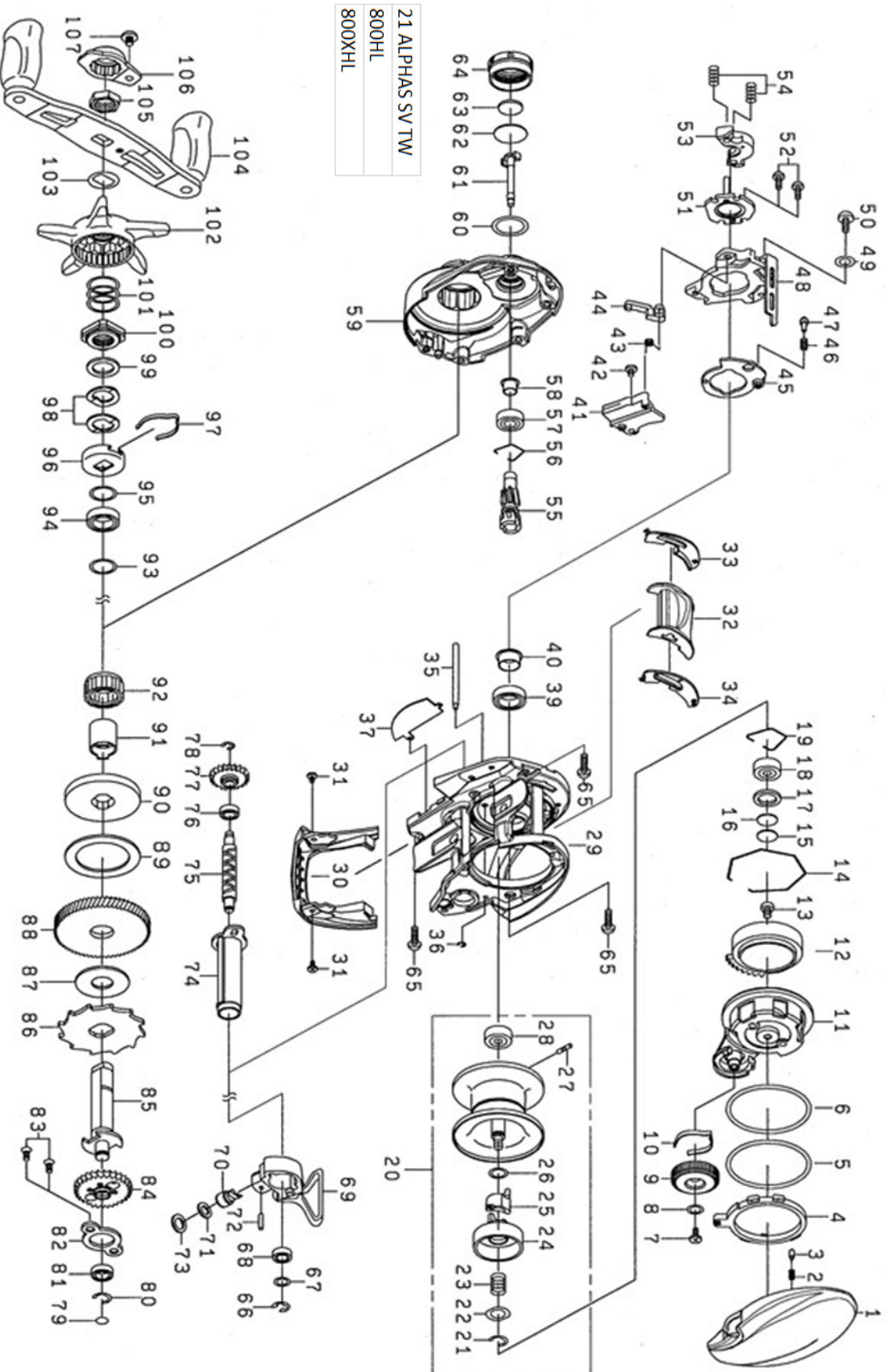




21 ALPHAS SV TW800HL

Feel Alive.

Please quote by part number, not key number when ordering.
spares@daiwaaustralia.com.au PH: (02) 8644 8644



| REEL NAME | MGFT CODE | KEY NO | PARTS CODE | DESCRIPTION |
|----------------------|-----------|--------|------------|-----------------------------------|
| 21 ALPHAS SV TW800HL | | 1 | 6J956701 | RIGHT SIDE PLATE |
| 21 ALPHAS SV TW800HL | | 2 | 6J631901 | LEVER PLATE SPRING |
| 21 ALPHAS SV TW800HL | | 3 | 6J286301 | LEVER PLATE PIN |
| 21 ALPHAS SV TW800HL | | 4 | 6J957101 | LEVER PLATE (A) |
| 21 ALPHAS SV TW800HL | | 5 | 6J957201 | LEVER PLATE (B) |
| 21 ALPHAS SV TW800HL | | 6 | 6J957303 | LEVER PLATE (C) |
| 21 ALPHAS SV TW800HL | | 7 | 6G940402 | BRAKE DIAL SCREW |
| 21 ALPHAS SV TW800HL | | 8 | 6H159202 | BRAKE DIAL WASHER |
| 21 ALPHAS SV TW800HL | | 9 | 6J741806 | BRAKE DIAL |
| 21 ALPHAS SV TW800HL | | 10 | 6H663401 | BRAKE DIAL SPRING |
| 21 ALPHAS SV TW800HL | | 11 | 6J956901 | SET PLATE |
| 21 ALPHAS SV TW800HL | | 12 | 6J957401 | MAGNET HOLDER |
| 21 ALPHAS SV TW800HL | | 13 | 6H666002 | MAGNET HOLDER SCREW |
| 21 ALPHAS SV TW800HL | | 14 | 6J957601 | MAGNET HOLDER RETAINER |
| 21 ALPHAS SV TW800HL | | 15 | 63757404 | RS SPOOL ADJUST WASHER (A) |
| 21 ALPHAS SV TW800HL | | 16 | 63757411 | RS SPOOL ADJUST WASHER (B) |
| 21 ALPHAS SV TW800HL | | 17 | 6F574303 | RS SPOOL ADJUST WASHER (C) |
| 21 ALPHAS SV TW800HL | | 18 | 6G431104 | RS BALL BEARING |
| 21 ALPHAS SV TW800HL | | 19 | 6E219701 | RS BALL BEARING RETAINER |
| 21 ALPHAS SV TW800HL | | 20 | 6Z025895 | SPOOL ASSY |
| 21 ALPHAS SV TW800HL | | 21 | 63208002 | BRAKE CUP SPRING RETAINER |
| 21 ALPHAS SV TW800HL | | 22 | 6I497001 | BRAKE CUP SPRING WASHER |
| 21 ALPHAS SV TW800HL | | 23 | 6H862301 | BRAKE CUP SPRING |
| 21 ALPHAS SV TW800HL | | 24 | 6M177201 | BRAKE CUP |
| 21 ALPHAS SV TW800HL | | 25 | 6J190301 | BRAKE CUP COLLAR |
| 21 ALPHAS SV TW800HL | | 26 | 6E096501 | BRAKE CUP WASHER |
| 21 ALPHAS SV TW800HL | | 27 | 6J252301 | SPOOL HOLDER PIN |
| 21 ALPHAS SV TW800HL | | 28 | 6F811806 | SPOOL BALL BEARING |
| 21 ALPHAS SV TW800HL | | 29 | 6M107901 | FRAME |
| 21 ALPHAS SV TW800HL | | 30 | 6J956601 | FRONT COVER |
| 21 ALPHAS SV TW800HL | | 31 | 6H531508 | FRONT COVER SCREW |
| 21 ALPHAS SV TW800HL | | 32 | 6J956101 | CLUTCH LEVER |
| 21 ALPHAS SV TW800HL | | 33 | 6J955601 | CLUTCH LEVER PLATE (L) |
| 21 ALPHAS SV TW800HL | | 34 | 6J955501 | CLUTCH LEVER PLATE (R) |
| 21 ALPHAS SV TW800HL | | 35 | 6M134001 | STABILIZER BAR |
| 21 ALPHAS SV TW800HL | | 36 | 6H704101 | STABILIZER BAR RETAINER |
| 21 ALPHAS SV TW800HL | | 37 | 6J955701 | FRAME PLATE |
| 21 ALPHAS SV TW800HL | | 39 | 6G431002 | PINION BALL BEARING (A) |
| 21 ALPHAS SV TW800HL | | 40 | 6J764501 | PINION BALL BEARING (A) COLLAR |
| 21 ALPHAS SV TW800HL | | 41 | 6J765701 | CLUTCH TRIP LEVER PLATE (A) |
| 21 ALPHAS SV TW800HL | | 42 | 6H531508 | CLUTCH TRIP LEVER PLATE (A) SCREW |
| 21 ALPHAS SV TW800HL | | 43 | 6J915301 | CLUTCH TRIP LEVER PLATE SPRING |
| 21 ALPHAS SV TW800HL | | 44 | 6J638601 | CLUTCH TRIP LEVER |
| 21 ALPHAS SV TW800HL | | 45 | 6J765601 | CLUTCH CAM PLATE (A) |
| 21 ALPHAS SV TW800HL | | 46 | 6H928801 | CLUTCH CAM PLATE SPRING |
| 21 ALPHAS SV TW800HL | | 47 | 6J055201 | CLUTCH CAM PLATE PIN |
| 21 ALPHAS SV TW800HL | | 48 | 6J955801 | CLUTCH CAM |
| 21 ALPHAS SV TW800HL | | 49 | 6M070001 | CLUTCH CAM WASHER |
| 21 ALPHAS SV TW800HL | | 50 | 6B360406 | CLUTCH CAM SCREW |
| 21 ALPHAS SV TW800HL | | 51 | 6H659101 | CLUTCH CAM PLATE (B) |
| 21 ALPHAS SV TW800HL | | 52 | 6B032904 | CLUTCH CAM PLATE (B) SCREW |
| 21 ALPHAS SV TW800HL | | 53 | 6H944401 | YOKE |
| 21 ALPHAS SV TW800HL | | 54 | 6J313901 | YOKE SPRING |
| 21 ALPHAS SV TW800HL | | 55 88 | 6Z025316 | PINION DRIVE GEAR SET |
| 21 ALPHAS SV TW800HL | | 56 | 6H448401 | PINION BALL BEARING RETAINER |
| 21 ALPHAS SV TW800HL | | 57 | 6G538003 | PINION BALL BEARING (B) |
| 21 ALPHAS SV TW800HL | | 58 | 6J724601 | PINION BALL BEARING (B) COLLAR |
| 21 ALPHAS SV TW800HL | | 59 | 6J969001 | LEFT SIDE PLATE |
| 21 ALPHAS SV TW800HL | | 60 | 6I279701 | ZERO ADJUSTER KNOB O RING |
| 21 ALPHAS SV TW800HL | | 61 | 6G931001 | PINION SHAFT |

| REEL NAME | MGFT CODE | KEY NO | PARTS CODE | DESCRIPTION |
|----------------------|-----------|--------|------------|---------------------------|
| 21 ALPHAS SV TW800HL | | 62 | 6H161001 | ZERO ADJUSTER WASHER (A) |
| 21 ALPHAS SV TW800HL | | 63 | 6B175503 | ZERO ADJUSTER WASHER (B) |
| 21 ALPHAS SV TW800HL | | 64 | 6J738101 | ZERO ADJUSTER KNOB |
| 21 ALPHAS SV TW800HL | | 65 | 6G945818 | LEFT SIDE PLATE SCREW |
| 21 ALPHAS SV TW800HL | | 66 | 63205901 | WORM SHAFT RETAINER |
| 21 ALPHAS SV TW800HL | | 67 | 6B411702 | WORM SHAFT WASHER |
| 21 ALPHAS SV TW800HL | | 68 | 6G720001 | WORM SHAFT BUSHING |
| 21 ALPHAS SV TW800HL | | 69 | 6M148601 | LEVELWIND |
| 21 ALPHAS SV TW800HL | | 70 | 6J740101 | PAWL |
| 21 ALPHAS SV TW800HL | | 71 | 6M161301 | PAWL WASHER |
| 21 ALPHAS SV TW800HL | | 72 | 6J740201 | LEVELWIND PIN |
| 21 ALPHAS SV TW800HL | | 73 | 6G252202 | PAWL O RING |
| 21 ALPHAS SV TW800HL | | 74 | 6J765801 | WORM SHIELD |
| 21 ALPHAS SV TW800HL | | 75 | 6J912601 | WORM SHAFT |
| 21 ALPHAS SV TW800HL | | 76 | 6G469005 | WORM SHAFT BALL BEARING |
| 21 ALPHAS SV TW800HL | | 77 | 6J693901 | WORM GEAR |
| 21 ALPHAS SV TW800HL | | 78 | 6B339801 | WORM GEAR RETAINER |
| 21 ALPHAS SV TW800HL | | 79 | 6G099801 | DRIVE SHAFT WASHER |
| 21 ALPHAS SV TW800HL | | 80 | 63208002 | DRIVE SHAFT RETAINER |
| 21 ALPHAS SV TW800HL | | 81 | 6G466202 | DRIVE SHAFT BALL BEARING |
| 21 ALPHAS SV TW800HL | | 82 | 6J693701 | DRIVE SHAFT PLATE |
| 21 ALPHAS SV TW800HL | | 83 | 6G297002 | DRIVE SHAFT PLATE SCREW |
| 21 ALPHAS SV TW800HL | | 84 | 6J693601 | DRIVE SHAFT GEAR |
| 21 ALPHAS SV TW800HL | | 85 | 6J956202 | DRIVE SHAFT |
| 21 ALPHAS SV TW800HL | | 86 | 6H660901 | RATCHET |
| 21 ALPHAS SV TW800HL | | 87 | 63746605 | DRIVE GEAR WASHER |
| 21 ALPHAS SV TW800HL | | 55 88 | 6Z025316 | PINION DRIVE GEAR SET |
| 21 ALPHAS SV TW800HL | | 89 | 6H359002 | DRAG WASHER |
| 21 ALPHAS SV TW800HL | | 90 | 6J694401 | KEY WASHER |
| 21 ALPHAS SV TW800HL | | 91 | 6J377801 | ONEWAY CLUTCH COLLAR |
| 21 ALPHAS SV TW800HL | | 92 | 6J540401 | ONEWAY CLUTCH |
| 21 ALPHAS SV TW800HL | | 93 | 6B553804 | HANDLE BEARING WASHER (A) |
| 21 ALPHAS SV TW800HL | | 94 | 6B861704 | HANDLE BALL BEARING |
| 21 ALPHAS SV TW800HL | | 95 | 6B553801 | HANDLE BEARING WASHER (B) |
| 21 ALPHAS SV TW800HL | | 96 | 6F028203 | CLICK SPRING HOLDER |
| 21 ALPHAS SV TW800HL | | 97 | 6F032401 | CLICK LEAF SPRING |
| 21 ALPHAS SV TW800HL | | 98 | 61508901 | DRAG SPRING WASHER |
| 21 ALPHAS SV TW800HL | | 99 | 6H929501 | STAR DRAG WASHER |
| 21 ALPHAS SV TW800HL | | 100 | 6J141002 | STAR DRAG METAL |
| 21 ALPHAS SV TW800HL | | 101 | 6J011901 | STAR DRAG SPRING |
| 21 ALPHAS SV TW800HL | | 102 | 6J140001 | STAR DRAG |
| 21 ALPHAS SV TW800HL | | 103 | 6F576601 | HANDLE PLATE |
| 21 ALPHAS SV TW800HL | | 104 | 6J958101 | HANDLE ASSEMBLY |
| 21 ALPHAS SV TW800HL | | 105 | 6G793310 | HANDLE NUT |
| 21 ALPHAS SV TW800HL | | 106 | 6J958401 | HANDLE LOCK PLATE |
| 21 ALPHAS SV TW800HL | | 107 | 6G835504 | HANDLE LOCK PLATE SCREW |
| 21 ALPHAS SV TW800HL | | 200 | 6B411703 | HANDLE KNOB WASHER |
| 21 ALPHAS SV TW800HL | | 201 | 6G720001 | HANDLE KNOB COLLAR |
| 21 ALPHAS SV TW800HL | | 202 | 6Q344801 | HANDLE KNOB |
| 21 ALPHAS SV TW800HL | | 203 | 6B679308 | HANDLE KNOB SCREW |
| 21 ALPHAS SV TW800HL | | 204 | 6Q345003 | HANDLE KNOB CAP |