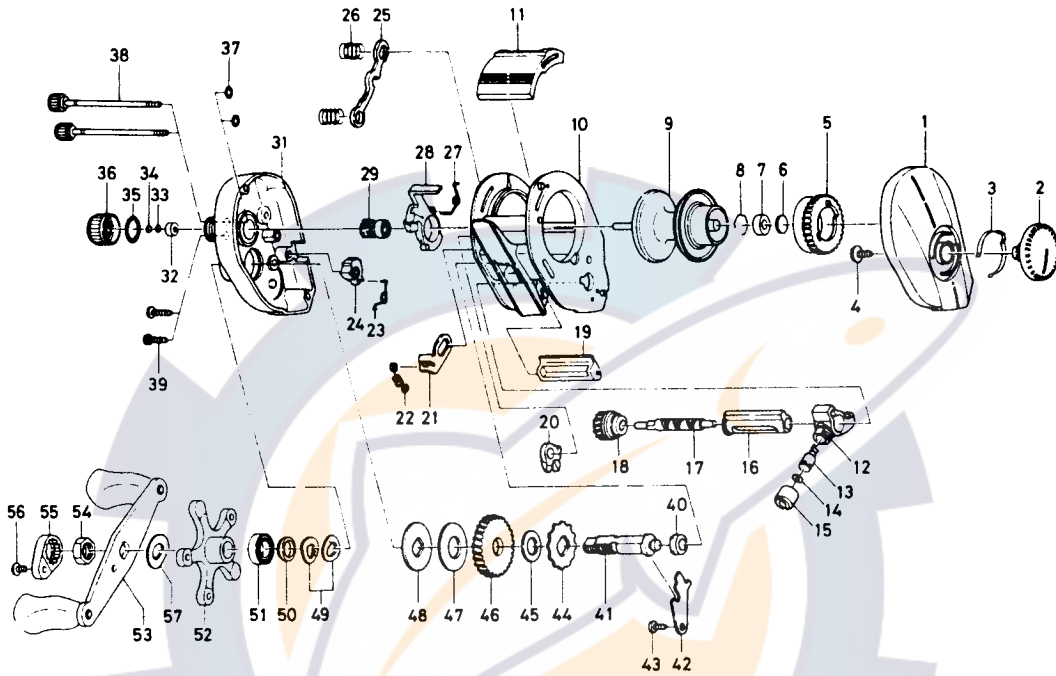


BAITCASTING REEL MA15L-2B



Key No.	Parts No.	Parts Name	Key No.	Parts No.	Parts Name
1	E28-5002	Right side plate	29	E28-4201	Pinion gear
2	E23-9702	Brake adjusting knob	31	E28-4807	Left side plate
3	B74-7702	Brake click spring	32	E34-2401	Bushing B
4	E03-7801	Brake adjusting knob screw	33	E16-9201	Spool adjusting cap metal
5	E23-9501	Magnet holder	34	E17-0501	Spacer B
6	375-7400	Spacer A	35	171-5201	"O" ring A
7	B55-0301	Bushing A	36	E23-8401	Cast control cap
8	B42-1601	Bearing retainer	37	B85-3101	"O" ring B
9	E28-5302	Spool assembly	38	B91-1708	Left side plate screw
10	E35-2402	Frame assembly	39	E13-0501	Set plate screw
11	E28-3702	Clutch lever	40	B55-0301	Bushing C
12	E16-6301	Line guide	41	E23-7501	Drive shaft
13	121-4212	Line guide pawl	42	E23-7601	Drive shaft retainer
14	375-4100	Line guide washer	43	B83-4402	Drive shaft retainer screw
15	342-4801	Pawl cap	44	E32-7701	Anti-reverse ratchet
16	E28-4701	Level wind guard	45	375-7103	Drive shaft washer
17	E28-4601	Worm shaft	46	E28-4401	Drive gear
18	E20-6001	Worm shaft gear	47	B36-0202	Drag washer
19	E28-3502	Line guard	48	B36-0301	Key washer
20	E23-8001	Anti-reverse pawl	49	150-8901	Drag spring washer
21	E28-3901	Clutch trip plate	50	E20-8501	Spacing sleeve
22	E30-6001	Clutch trip plate spring	51	E15-4001	Ball bearing
23	E30-9601	Anti-reverse lever spring	52	E23-8702	Star drag
24	E30-9501	Anti-reverse lever	53	E30-5201	Handle assembly
25	E23-7701	Yoke	54	B43-3601	Handle nut
26	E16-7101	Yoke spring	55	B43-3902	Handle nut plate
27	E34-6701	Clutch cam spring	56	351-1801	Handle nut plate screw
28	E28-4001	Clutch cam	57	150-9001	Friction washer