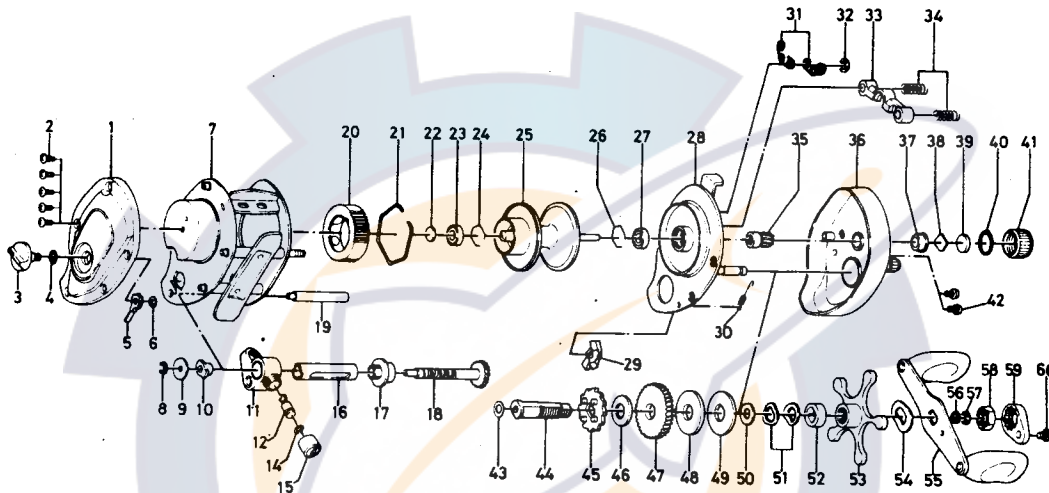


BAITCASTING REEL **PMF15**



Key No.	Parts No.	Parts Name	Key No.	Parts No.	Parts Name
1	B54-1207	Left side cover	35	B64-2901	Pinion gear
2	B36-0401	Left side cover screw	36	B71-2104	Right side cover
3	B66-1001	Brake adjusting knob	37	B64-3101	Bush
4	637-0601	"O" ring	38	B17-5401	Ball bearing ret. washer
5	B54-1701	Brake adjusting gear	39	B17-5501	Bearing metal washer
6	320-4202	Brake adjusting gear retainer	40	171-5201	"O" ring
7	371-2601	Frame	41	B35-7305	Right spool cap
8	320-5901	Worm shaft retainer	42	B36-0401	Right side cover screw
9	376-1801	Worm shaft holder washer	43	373-7611	Gear shaft washer A
10	022-2201	Worm shaft holder	44	B35-9602	Gear shaft
11	B57-8701	Line guide	45	B35-9701	Ratchet
12	B71-0101	Line guide pin	46	375-7102	Gear shaft washer B
14	375-4100	Line guide washer	47	B36-0101	Drive gear
15	342-4801	Line guide nut	48	336-0202	Drag washer A
16	336-4101	Worm shield	49	B36-0301	Drag washer B
17	B36-1201	Shield bush	50	373-7803	Drag washer C
18	B36-3102	Worm shaft	51	150-8901	Spring washer
19	B36-4401	Frame post	52	634-5801	Bush
20	B58-2501	Magnet holder	53	B36-0501	Star drag
21	B54-3201	Magnet holder ret. ring	54	150-9001	Handle washer
22	375-7400	Bearing metal washer	55	B46-5801	Handle
23	B35-8601	Ball bearing	56	B41-1701	Handle nut washer
24	B42-1601	Ball bearing retainer	57	320-8202	Handle nut retainer
25	B54-5901	Spool	58	B43-3601	Handle nut
26	B42-1601	Ball bearing retainer	59	B43-3903	Handle nut plate
27	B35-8601	Ball bearing	60	351-1801	Handle nut plate screw
28	B57-7901	Set plate			
29	B68-2801	Anti-reverse claw			
30	B35-8901	Anti-reverse claw spring			
31	B36-9101	Set plate spring			
32	320-1402	Clutch ret. ring			
33	B35-9001	Pinion yoke			
34	144-7101	Pinion yoke spring			