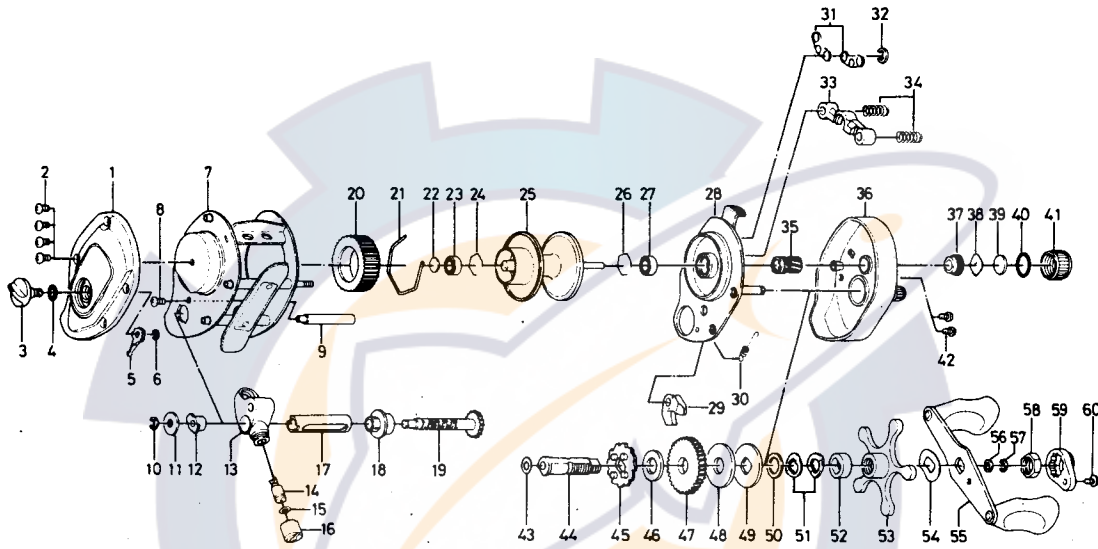




# BAITCASTING REEL **PMF7**



Key No.	Parts No.	Parts Name	Key No.	Parts No.	Parts Name
1	B65-7204	Left side cover	31	B36-9101	Set plate spring
2	B36-0401	Left side cover screw	32	320-1402	Clutch ret. ring
3	B66-1001	Brake adjusting knob	33	B35-9001	Pinion yoke
4	637-0601	"O" ring A	34	144-7101	Pinion yoke spring
5	B54-1701	Brake adjusting gear	35	B64-2901	Pinion gear
6	320-4202	Brake adjusting gear retainer	36	B65-6504	Right side cover
7	B66-1801	Frame	37	B64-3101	Bush
8	B36-0401	Left side cover screw	38	B17-5401	Spool adjusting cap metal A
9	B65-8201	Frame post	39	B17-5501	Spool adjusting cap metal B
10	320-5901	Worm shaft retainer	40	171-5201	"O" ring B
11	376-1801	Worm shaft holder washer	41	B35-7305	Right spool cap
12	022-2201	Worm shaft holder	42	B36-0401	Right side cover screw
13	B46-7401	Line guide	43	373-7611	Gear shaft washer A
14	B71-0101	Line guide pin	44	B35-9602	Gear shaft
15	375-4100	Line guide washer	45	B35-9701	Ratchet
16	342-4801	Line guide nut	46	375-7102	Gear shaft washer B
17	B26-9301	Worm shield	47	B36-0101	Drive gear
18	B36-1201	Shield bush	48	B36-0202	Drag washer A
19	B46-7602	Worm shaft	49	B36-0301	Drag washer B
20	B66-1201	Magnet holder	50	373-7803	Drag washer C
21	B54-3201	Magnet holder ret. ring	51	150-8901	Spring washer
22	375-7400	Bearing metal washer	52	634-5801	Spacing sleeve
23	B35-8601	Ball bearing	53	B36-0501	Star drag
24	B42-1601	Ball bearing retainer	54	150-9001	Handle washer
25	B65-8301	Spool	55	B46-5801	Handle
26	B42-1601	Ball bearing retainer	56	B41-1701	Handle nut washer
27	B35-8601	Ball bearing	57	320-8202	Handle nut retainer
28	B66-2701	Set plate	58	B43-3601	Handle nut
29	B46-5401	Anti-reverse claw	59	B43-3903	Handle nut plate
30	B35-8901	Anti-reverse claw spring	60	351-1801	Handle nut plate screw