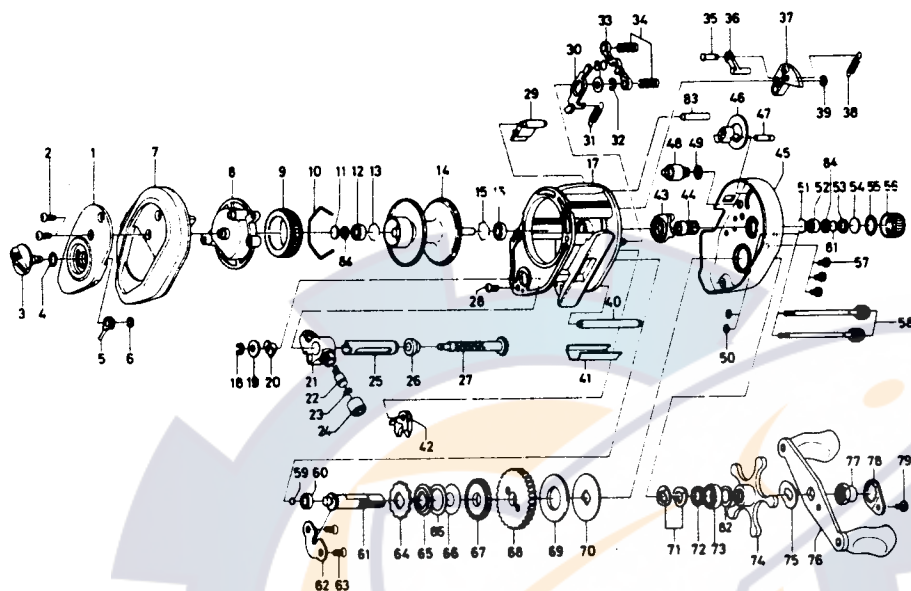


BAITCASTING REEL PT33SH



Key No.	Parts No.	Parts Name
1	E20-0710	Left set plate A
2	353-4402	Left side plate screw
3	B98-5001	Brake adjusting knob
4	637-0601	"O" ring A
5	B54-1701	Brake adjusting gear
6	320-4202	Brake adjusting gear retainer
7	E20-0401	Left side plate
8	E20-0501	Left set plate B
9	B66-1202	Magnet holder
10	B54-3201	Magnet holder ret. ring
11	375-7405	Spacer A
12	B35-8601	Ball bearing A
13	B42-1601	Bearing retainer A
14	E23-6201	Spool assembly
15	B42-1601	Bearing retainer B
16	B35-8601	Ball bearing A
17	E30-7502	Frame assembly
18	320-5901	Worm shaft retainer
19	376-1801	Worm shaft holder washer
20	B71-5601	Worm bearing A
21	E20-8401	Line guide
22	121-4212	Line guide pawl
23	373-1300	Line guide washer
24	342-4802	Pawl cap
25	B99-1801	Level wind guard
26	E19-9501	Worm bearing B
27	E19-9601	Worm shaft
28	353-4401	Stabilizer bar screw
29	E20-3701	Set plate spacer
30	E19-7601	Clutch trip plate
31	E19-7701	Clutch trip plate spring
32	320-1402	Clutch trip plate retainer
33	E30-4301	Yoke
34	E23-6401	Yoke spring
35	E19-7201	Clutch trip plate arm pin
36	E19-7101	Clutch trip plate arm
37	E19-7001	Clutch cam
38	E19-7501	Clutch cam spring
39	B33-9801	Clutch cam retainer
40	E19-9801	Stabilizer bar A
41	E20-3501	Line guard
42	E19-8101	Anti-reverse pawl
43	E19-6901	Yoke plate

Key No.	Parts No.	Parts Name
44	E30-4401	Pinion gear
45	E32-6101	Right side plate
46	E19-7301	Flipping/casting selector
47	E19-7401	Flipping/casting selector pin
48	E19-5401	Line memo dial
49	637-0601	"O" ring B
50	B85-3101	Right side plate screw washer
51	E21-9701	Bearing retainer C
52	E08-8001	Ball bearing B
53	E23-0501	Spacer B
54	B17-5501	Spacer C
55	171-5201	"O" ring C
56	B85-3401	Cast control cap
57	353-4402	Set plate screw
58	B91-1701	Right side plate screw
59	B12-0201	Drive shaft washer A
60	B35-8601	Ball bearing A
61	E30-4601	Drive shaft
62	E19-9401	Drive shaft retainer
63	B39-5503	Drive shaft retainer screw
64	E19-9901	Anti-reverse ratchet
65	E30-4701	Drive shaft washer B
66	B96-7401	Drag washer A
67	E30-4801	Worm drive gear
68	E30-4901	Drive gear
69	375-9403	Drag washer B
70	E20-0201	Key washer
71	150-8901	Drag spring washer
72	E20-8501	Spacing sleeve
73	E15-4001	Ball bearing C
74	B86-4205	Star drag
75	150-9001	Friction washer
76	E32-6201	Handle assembly
77	B86-2402	Handle nut
78	040-3201	Handle nut plate
79	353-8302	Handle nut plate screw
80	371-6903	Clutch trip plate washer
81	374-9102	Spool adjusting cap metal
82	B68-4402	Drag washer C
83	E19-6801	Stabilizer bar B
84	E25-6101	Oiled washer
85	E30-6101	Drag washer C