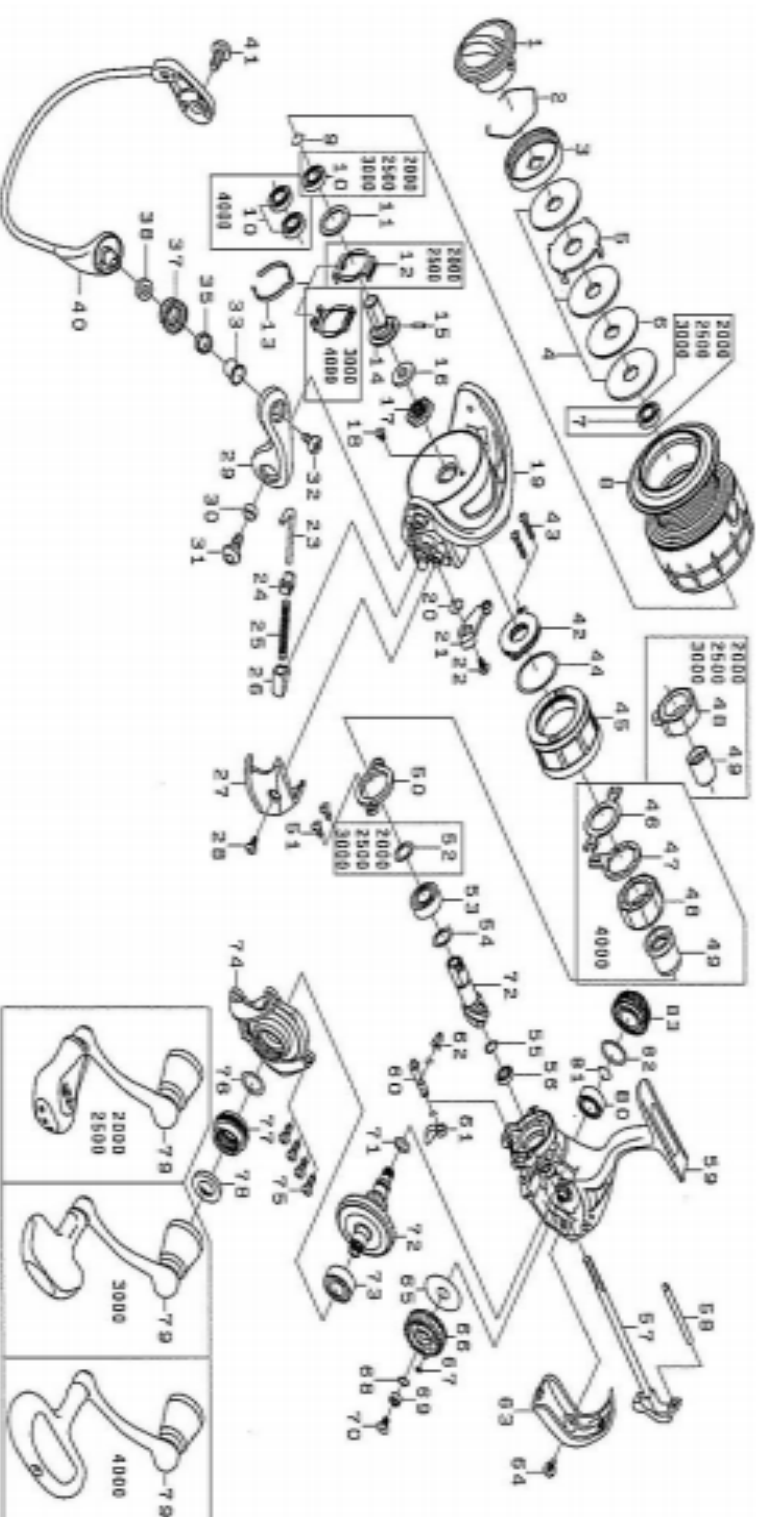




14 BALLISTIC EX 2500H

Feel Alive.

Please quote by part number, not key number when ordering.
spares@daiwaaustralia.com.au PH: (02) 8644 8644



REEL NAME	MGFT CODE	KEY NO	PARTS CODE	DESCRIPTION
14 BALLISTIC EX 2500H		1	6J095001	DRAG KNOB
14 BALLISTIC EX 2500H		2	6F710001	DRAG WASHER RETAINER
14 BALLISTIC EX 2500H		3	6F895301	DRAG KNOB CLICK PLATE
14 BALLISTIC EX 2500H		4	6F691001	DRAG WASHER
14 BALLISTIC EX 2500H		5	6F627301	EARED WASHER
14 BALLISTIC EX 2500H		6	6F627201	KEY WASHER
14 BALLISTIC EX 2500H		7	6E306801	BALL BEARING (A)
14 BALLISTIC EX 2500H		8	6J094801	SPOOL ASSEMBLY(2-8)
14 BALLISTIC EX 2500H		9	6G472401	BEARING RETAINER (A)
14 BALLISTIC EX 2500H		10	6E306801	BALL BEARING (B)
14 BALLISTIC EX 2500H		11	6H806300	WASHER (A)
14 BALLISTIC EX 2500H		12	6H416001	CLICK LEAF SPRING HOLDER
14 BALLISTIC EX 2500H		13	6H883701	SPOOL CLICK LEAF SPRING
14 BALLISTIC EX 2500H		14	6H601301	SPOOL METAL
14 BALLISTIC EX 2500H		15	6G375001	PIN
14 BALLISTIC EX 2500H		16	6H961201	PACKING(A)
14 BALLISTIC EX 2500H		17	6H961101	ROTOR NUT
14 BALLISTIC EX 2500H		18	6H022701	SCREW (A)
14 BALLISTIC EX 2500H		19	6H960008	ROTOR
14 BALLISTIC EX 2500H		20	6H413601	BAIL TRIP LEVER SPRING
14 BALLISTIC EX 2500H		21	6J038501	BAIL TRIP LEVER
14 BALLISTIC EX 2500H		22	6H417701	SCREW (B)
14 BALLISTIC EX 2500H		23	6H414101	BAIL SPRING SHAFT
14 BALLISTIC EX 2500H		24	6H576101	BAIL SPRING PLATE
14 BALLISTIC EX 2500H		25	6H545701	BAIL SPRING
14 BALLISTIC EX 2500H		26	6H414301	BAIL SPRING HOLDER
14 BALLISTIC EX 2500H		27	6H960201	COVER (A)
14 BALLISTIC EX 2500H		28	6H431301	SCREW (C)
14 BALLISTIC EX 2500H		29	6H728909	BAIL ARM
14 BALLISTIC EX 2500H		30	6H962401	COLLAR (A)
14 BALLISTIC EX 2500H		31	6H431201	SCREW (D)
14 BALLISTIC EX 2500H		32	6G195602	SCREW (E)
14 BALLISTIC EX 2500H		33	6G195501	COLLAR (B)
14 BALLISTIC EX 2500H		35	6G220701	COLLAR (C)
14 BALLISTIC EX 2500H		37	6J089901	LINE ROLLER
14 BALLISTIC EX 2500H		38	6G874201	COLLAR (D)
14 BALLISTIC EX 2500H		40	6J096801	BAIL ASSEMBLY
14 BALLISTIC EX 2500H		41	6H431201	SCREW (F)
14 BALLISTIC EX 2500H		42	6H532602	MAGNET ASSEMBLY
14 BALLISTIC EX 2500H		43	6H596501	SCREW (G)
14 BALLISTIC EX 2500H		44	6H413001	"O"RING (A)
14 BALLISTIC EX 2500H		45	6H609312	COVER (B)
14 BALLISTIC EX 2500H		46	-	-
14 BALLISTIC EX 2500H		47	-	-
14 BALLISTIC EX 2500H		48	6H412601	ROLLER CLUTCH
14 BALLISTIC EX 2500H		49	6H615501	SPACING SLEEVE
14 BALLISTIC EX 2500H		50	6H442201	BEARING RETAINER(B)
14 BALLISTIC EX 2500H		51	6G997301	SCREW (H)
14 BALLISTIC EX 2500H		52	63758501	WASHER (B)
14 BALLISTIC EX 2500H		53	6G467305	BALL BEARING (C)
14 BALLISTIC EX 2500H		54	63758500	WASHER (C)
14 BALLISTIC EX 2500H		55	6H931701	SPRING WASHER
14 BALLISTIC EX 2500H		56	6H959601	BALL BEARING (D)
14 BALLISTIC EX 2500H		57	6H596001	MAIN SHAFT
14 BALLISTIC EX 2500H		58	6H596301	STABILIZER BAR
14 BALLISTIC EX 2500H		59	6J094201	BODY
14 BALLISTIC EX 2500H		60	6H595501	ANTI-REVERSE CAM
14 BALLISTIC EX 2500H		61	6H595401	ANTI-REVERSE LEVER
14 BALLISTIC EX 2500H		62	6H697801	ANTI-REVERSE CAM SPRING
14 BALLISTIC EX 2500H		63	6H598102	REAR COVER

