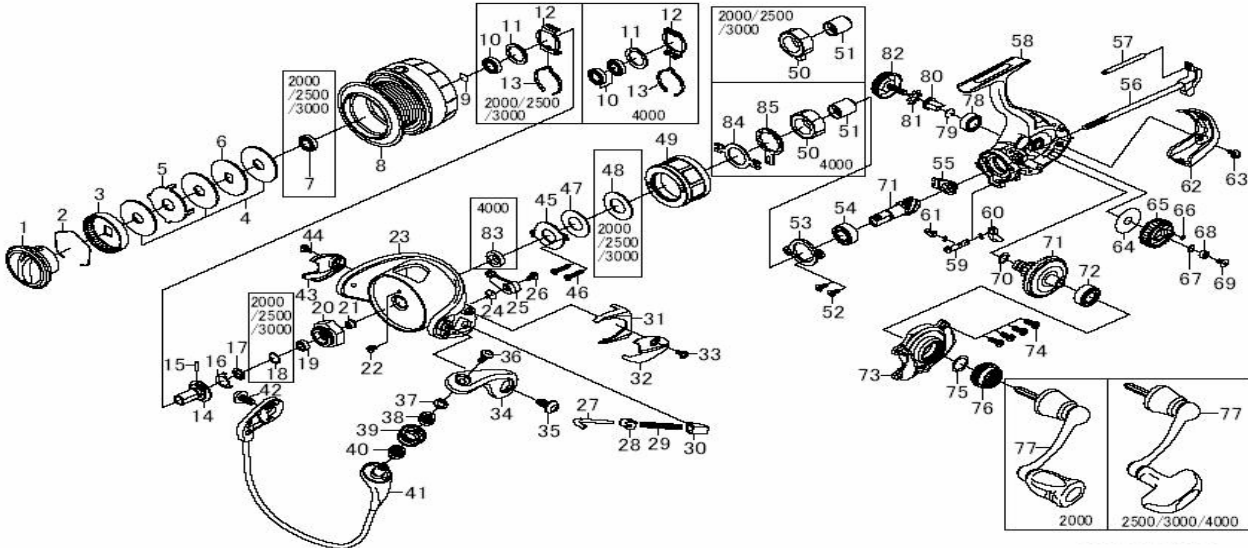


Please order by parts number, not key number  
 Veuillez indiquer le numéro de la pièce (Non "Key" No.)



# SPINNING REEL BALLISTIC 2000SH/2500SH/3000SH/4000SH



Key No.	BALLISTIC 2000SH	Parts Name	BALLISTIC 2500SH	BALLISTIC 3000SH	BALLISTIC 4000SH
1	F176-3801	Drag Knob	F176-0101	F176-0101	F176-1501
2	F171-2501	Drag Washer Retainer	F171-2501	F171-2501	F171-1001
3	F80-8701	Drag Knob Click Plate	F80-8701	F80-8701	F80-5302
4	F63-5201	Drag Washer	H76-1101	H76-1101	F62-7101
5	F62-5201	Lead Washer	H76-1301	H76-1301	F75-5701
6	F82-7701	Key Washer	H76-1201	H76-1201	F81-1702
7	F30-3801	Ball Bearing (A)	F30-3801	F30-3801	F176-3801
8	F30-3801	Ball Assembly	H76-9901	H76-0201	F62-5101
9	G47-3401	Bearing Retainer (A)	G47-3401	G47-3401	F62-5101
10	E30-8801	Ball Bearing (B)	E30-8801	E30-8801	F88-1704
11	F62-5500	Washer (A)	F62-5500	F62-5500	F62-5500
12	H41-6102	Click Lever Spring	H41-6102	H41-6102	F62-4101
13	H50-1301	Spool Click Leaf Spring	H50-1301	H50-1301	F0-9002
14	G37-3001	Pin	G37-3001	G37-3001	G22-4101
15	H41-5201	Bearing Retainer (B)	H41-5201	H41-5201	H41-5201
16	H41-5201	Locking	H41-5701	H41-5701	H60-5001
17	H41-5201	Washer (B)	G46-5103	G46-5103	-
18	G46-0201	Ball Bearing (C)	G46-0201	G46-0201	G46-7101
19	G33-7801	Rotor Nut	H41-5201	H41-5201	H41-5201
20	H41-5201	Collar (A)	H41-5501	H41-5501	H50-4902
21	H07-3701	Screw (A)	H07-3701	H07-3701	H07-2701
22	H41-3204	Rotor	H41-3509	H41-3509	H61-0203
23	H41-3204	Ball Trip Lever Spring	H41-3501	H41-3501	H61-0101
24	H41-4101	Ball Trip Lever	H41-3701	H41-3701	H61-0101
25	H41-7701	Screw (B)	H41-7701	H41-7701	H41-7701
26	H41-3601	Ball Spring Shaft	H41-4101	H41-4101	H61-0601
27	H57-5101	Ball Spring Plate	H57-5101	H57-5101	H57-5101
28	H41-3401	Ball Spring	H64-6701	H64-6701	H64-6701
29	H41-4301	Ball Spring Holder	H41-4301	H41-4301	H41-4301
30	H41-3704	Cover (C)	H41-1007	H41-1007	H61-0803
31	H41-3801	Cover (A)	H41-1601	H41-1601	H61-0902
32	H41-3801	Cover (B)	H43-1301	H43-1301	H43-1301
33	H41-4406	Ball Arm	H41-4406	H41-4406	H53-3505
34	H43-1201	Screw (D)	H43-1201	H43-1201	H43-1201
35	H59-7701	Screw (E)	H59-7701	H59-7701	H59-7701
36	H41-5201	Collar (B)	H41-5401	H41-5401	H61-0301
37	H41-5201	Collar (C)	H41-5201	H41-5201	H41-5201
38	G68-6703	Line Roller	G68-6703	G68-6703	G68-6703
39	H41-5201	Collar (D)	H41-5201	H41-5201	H41-5201
40	H41-5201	Ball Assembly	H43-1201	H43-1201	H43-1201
41	H43-1201	Screw (F)	H41-5101	H41-5101	H41-1302
42	H44-4301	Cover (B)	H43-1301	H43-1301	H43-1301
43	H43-1301	Screw (G)	H60-1101	H60-1101	H64-0601
44	H60-1101	Cover Retainer	H59-6501	H59-6501	H59-6501
45	H59-6501	Screw (H)	H60-1001	H60-1001	H63-0801
46	H60-1001	Washer (C)	H60-0901	H60-0901	-
47	H60-0901	Washer (D)	H51-9303	H51-9303	H64-2504
48	H51-9303	Cover (D)	H41-2601	H41-2601	G31-1601
49	H61-5501	Roller Clutch	H61-5501	H61-5501	H63-9601
50	G99-7301	Spacing Sleeve	G99-7301	G99-7301	H62-4901
51	H44-2201	Screw (I)	H44-2201	H44-2201	H50-9101
52	H44-2201	Bearing Retainer (C)	G46-7301	G46-7301	G62-2801
53	G46-7301	Ball Bearing (D)	H59-6101	H59-6101	H61-9001
54	H59-6101	Collar (E)	H59-5001	H59-5001	H63-9101
55	H59-5001	Main Shaft	H59-8301	H59-8301	H63-9301
56	H76-6001	Stabilizer Bar	H75-0501	H75-0501	H76-3001
57	H59-5501	Anti-Reverse Cam	H59-5501	H59-5501	H63-9001
58	H59-5401	Anti-Reverse Lever	H59-5401	H59-5401	H59-5401
59	H59-7801	Anti-Reverse Cam Spring	H59-7801	H59-7801	H41-5101
60	H50-8102	Rear Cover	H50-8102	H50-8102	H64-0102
61	H59-8201	Screw (J)	H59-8201	H59-8201	H59-8201
62	H59-8701	Washer (E)	H59-3701	H59-3701	G64-4201
63	H77-0601	Oscillating Gear	H72-0601	H77-0601	H61-3301
64	H12-9200	Washer (F)	H12-9200	H12-9200	B86-3101
65	G46-9002	Ball Bearing (E)	G46-9002	G46-9002	G46-7102
66	G99-7001	"O" Ring (A)	G67-0501	G67-0501	G61-5301
67	G67-0501	"O" Ring (B)	Z03-0553	Z03-0553	Z02-0493
68	Z02-0712	Pinion Gear + Drive Gear	G46-7301	G46-7301	G52-3103
69	G46-7301	Ball Bearing (F)	H72-9701	H72-9701	H76-4301
70	G99-7001	Side Cover	H59-7701	H59-7701	H61-7701
71	H59-7701	Washer (G)	G61-3400	G61-3400	G64-5601
72	H59-7801	Screw (M)	H59-7801	H59-7801	H61-5701
73	H76-3501	Handle Assembly	H75-0801	H75-0801	H76-4501
74	G42-2701	Ball Bearing (G)	G42-2701	G42-2701	G62-2701
75	G47-2401	Bearing Retainer (D)	G47-2401	G47-2401	G52-5101
76	F72-1001	Collar (F)	F72-1001	F72-1001	F72-1202
77	160-8101	Washer (H)	160-8101	160-8101	160-8101
78	H61-3302	Handle Screw	H61-3302	H61-3302	H61-1802
79	-	Collar (G)	-	-	H64-0301
80	-	Clutch Cam Retainer	-	-	H66-5001
81	-	Clutch Cam	-	-	F64-1401
82	-	-	-	-	-
83	-	-	-	-	-
84	-	-	-	-	-
85	-	-	-	-	-
86	-	-	-	-	-