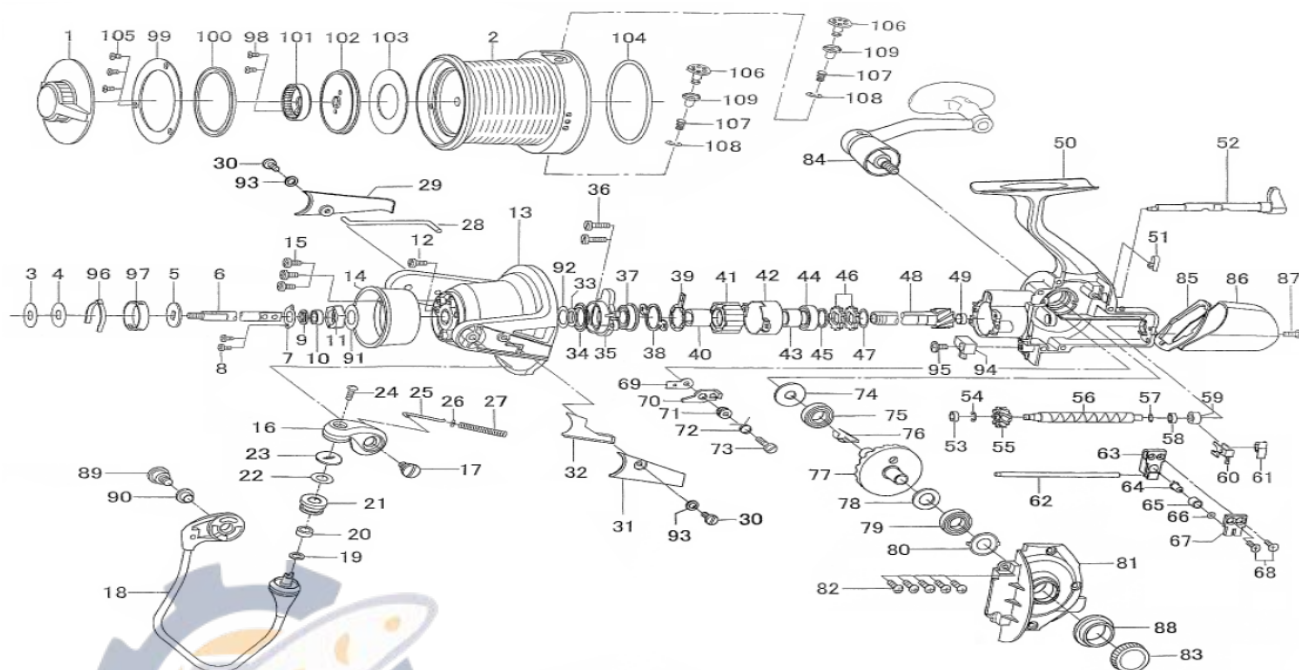




SPINNING REEL **TOURNAMENT BASIA 45KYOGOI**



Key No.	Parts No.	Parts Name	Key No.	Parts No.	Parts Name
1	G65-7301	Drag Knob	54	320-5901	Worm Shaft Retainer (A)
2,98-108	G65-7001	Spool Assembly	55	G17-6201	Worm Shaft Gear
3	E39-9201	Washer (A)	56	G17-6101	Worm Shaft
4	F04-3401	Washer (B)	57	B41-1700	Washer (H)
5	E26-7501	Washer (C)	58	G32-6201	Collar (F)
6	G37-2901	Main Shaft	59	G25-4101	Collar (G)
7	C18-0301	Rotor Nut Retainer	60	G17-6501	Worm Shaft Retainer (B)
8	E46-8801	Screw (A)	61	G25-3401	Collar (L)
9	G18-0201	Rotor Nut Shield	62	G17-6401	Stabilizer Bar
10	G31-4901	Ball Bearing (A)	63	G17-7101	Oscillating Slider
11	G18-0101	Rotor Nut	64	G17-7201	Oscillating Pawl
12	G29-2401	Screw (B)	65	G17-7301	Collar (H)
13	C17-8303	Rotor (A)	66	375-0800	Washer (I)
14	G17-9803	Rotor (B)	67	F26-4302	Oscillating Slider Cover
15	G29-2301	Screw (C)	68	352-1505	Screw (H)
16	G17-8403	Bail Arm	69	G17-5501	Anti-Reverse Pawl Plate
17	C18-8501	Screw (D)	70	C17-5601	Anti-Reverse Pawl
18	G17-8603	Bail Assembly	71	E26-2102	Collar (I)
19	G30-1101	Collar (A)	72	E26-2201	Anti-Reverse Pawl Spring (A)
20	G30-1301	Ball Bearing (B)	73	G27-8301	Screw (I)
21	G25-4201	Line Roller	74	G17-5701	Body Shield
22	G44-5501	Washer (D)	75	635-4801	Ball Bearing (F)
23	C17-9702	Collar (B)	76	E26-4502	Anti-Reverse Pawl Spring (B)
24	F60-8901	Screw (E)	77	G59-7901	Drive Gear
25	E32-6702	Bail Spring Shaft	78	371-2800	Washer (J)
26	E31-3901	Washer (E)	79	635-4801	Ball Bearing (G)
27	E26-5601	Bail Spring	80	G17-5701	Side Cover Shield
28	G17-9201	Rotor Shaft	81	G17-7603	Side Cover
29	G17-9303	Cover (B)	82	G17-7801	Screw (J)
30	F89-1503	Screw (F)	83	F23-5407	Handle screw
31	G17-8503	Cover (A)	84	G65-6901	Handle Assembly
32	G17-7701	Rotor Plate	85	G17-8001	Rear Cover Shield
33	371-2836	Washer (F)	86	G17-8109	Rear Cover
34	G17-8201	Rotor Shield	87	G18-0001	Screw (K)
35	G17-7001	Bearing Retainer	89	G25-3201	Screw (L)
36	G17-5203	Screw (G)	90	G25-3101	Collar (J)
37	F24-0001	Bell Bearing (C)	91	G25-3601	Washer (K)
38	G08-8401	Clutch Cam Retainer	92	G25-3501	Washer (L)
39	F64-1401	Clutch Cam	94	G25-6801	Collar (M)
40	G08-8201	Spacing Sleeve	95	351-7707	Screw (M)
41	G31-4501	Roller Clutch	96	F70-4902	Spool Click Leaf Spring
42	G17-5301	Roller Clutch Cover	97	F20-4001	Click Leaf Spring Holder
43	G17-6901	Collar (C)	98	G15-9901	Screw (N)
44	635-4801	Ball Bearing (D)	99	G37-3701	Spool Retainer
45	G17-6801	Collar (D)	100	G37-4601	Spool Shield
46	G17-6701	Anti-Reverse Ratchet	101	G37-3601	Drag Knob Click Plate
47	E33-9701	Washer (G)	102	G37-3501	Key Washer
48	C17-6601	Pinion Gear	103	G37-3401	Drag Washer
49	G17-5401	Collar (E)	104	G18-9001	Spool Ring
50	G65-6801	Body	105	G31-8501	Screw (O)
51	E32-7801	Anti-Reverse Cam Spring	106	C65-7201	Line Clip
52	C17-5803	Anti-Reverse Lever	107	B76-3201	Line Clip Spring
53	F28-3101	Ball Bearing (E)	108	B33-9801	Line Clip Retainer