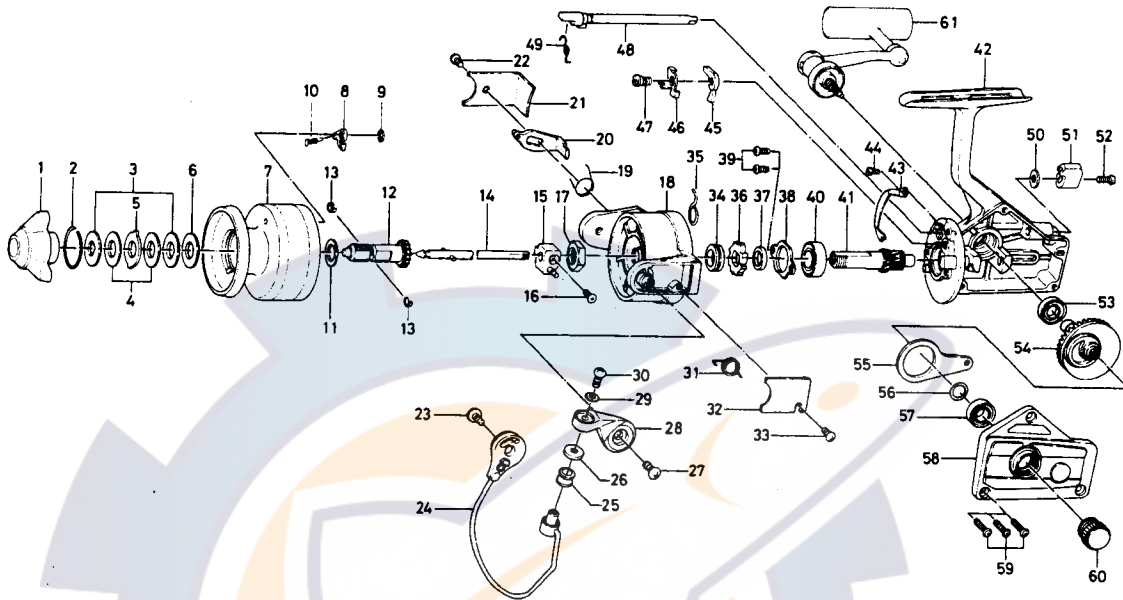


SPINNING REEL

**BLACK GOLD BG-15**



Key No.	Parts No.	Parts Name	Key No.	Parts No.	Parts Name
1	6-740-3801	Drag knob	32	6-B32-0201	Bail spring cover
2	6-170-4601	Drag washer retainer	33	6-351-7701	Bail spring cover screw
3	6-374-4802	Drag D washer	34	6-501-9901	Spring holder
4	6-373-3701	Disc washer	35	6-145-0901	Anti-reverse claw spring
5	6-373-3603	Drag A washer	36	6-280-9001	Ratchet
6	6-373-3704	Drag washer A	37	6-501-9801	Spacer
7	6-733-5405	Spool	38	6-321-0901	Ball bearing ret. washer
8	6-B07-5302	Spool click claw	39	6-351-0901	Ball bearing ret. washer screw
9	6-320-5901	Spool click claw retainer	40	6-635-4801	Ball bearing
10	6-144-1211	Spool click claw spring	41	6-403-2201	Pinion gear
11	6-375-5701	Spool washer	42	6-B31-8002	Body
12	6-720-1721	Spool metal	43	6-B32-1701	Cam kick plate
13	6-151-7211	Spool metal leaf spring	44	6-363-2911	Cam kick plate screw
14	6-B31-7601	Main shaft	45	6-111-8201	Anti-reverse claw
15	6-637-0102	Oscillating support	46	6-041-7101	Anti-reverse claw plate
16	6-351-6311	Oscillating slider screw	47	6-363-9301	Anti-reverse claw screw
17	6-B10-5701	Rotor nut	48	6-461-7104	Anti-reverse cam
18	6-B32-0301	Rotor	49	6-144-0321	Anti-reverse cam spring
19	6-B18-4701	Bail kick lever spring	50	6-371-6903	Anti-reverse lever washer
20	6-B32-1801	Bail kick lever	51	6-541-6801	Anti-reverse lever
21	6-B31-7801	Bail kick lever cover	52	6-353-4401	Anti-reverse lever screw
22	6-351-7701	Bail kick lever cover screw	53	6-637-5701	Ball bearing
23	6-353-8201	Bail holder screw	54	6-414-1312	Drive gear
24	6-B18-5003	Bail	55	6-481-2101	Oscillating slider
25	6-250-4221	Line roller	56	6-375-8500	Drive gear washer
26	6-501-1601	Roller collar	57	6-637-5701	Ball bearing
27	6-353-8201	Arm lever screw	58	6-B31-7502	Body cover
28	6-B18-4501	Arm lever	59	6-353-0001	Body cover screw
29	6-375-1001	Bail washer	60	6-B03-4802	Handle screw cap
30	6-353-8201	Bail screw	61	6-B36-8401	Handle
31	6-Ba8-4401	Bail spring			

Sold as one unit  
Spool assembly  
6-B06-0405