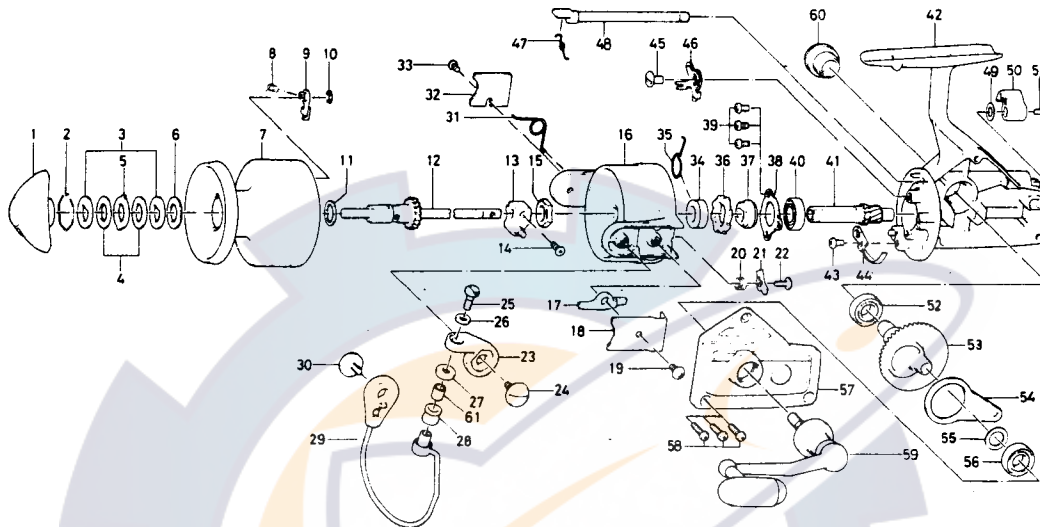


SPINNING REEL

**BLACK GOLD BG-20**



Key No.	Parts No.	Parts Name
1	6-740-4501	Drag knob
2	6-171-7701	Drag washer retainer
3	6-376-4001	Drag D washer
4	6-375-7802	Disc washer
5	6-375-8002	Drag A washer
6	6-375-7803	Drag washer A
7	6-734-7103	Spool
8	6-145-2101	Spool click claw spring
9	6-807-8201	Spool click claw
10	6-320-1402	Spool click claw retainer
11	6-376-3901	Spool washer
12	6-711-5702	Main shaft
13	6-637-3001	Oscillating support
14	6-351-8901	Oscillating slider screw
15	6-810-5701	Rotor nut
16	6-202-1617	Rotor
17	6-571-1001	Bail kick lever
18	6-041-8102	Bail kick lever cover
19	6-351-7701	Bail kick lever cover screw
20	6-145-0701	Bail kick cam spring
21	6-571-0901	Bail kick cam
22	6-351-4701	Bail kick cam screw
23	6-231-3501	Arm lever
24	6-363-5201	Arm lever screw
25	6-363-3111	Bail screw
26	6-375-1101	Bail washer
27	6-501-2001	Roller collar
28	6-250-4321	Line roller
29	6-725-8512	Bail
30	6-363-5201	Bail holder screw

Sold as one unit  
 Spool assembly  
 6-734-7002

Key No.	Parts No.	Parts Name
31	6-342-1701	Bail spring
32	6-041-8802	Bail spring cover
33	6-351-6101	Bail spring cover screw
34	6-502-1301	Spring holder
35	6-145-2901	Anti-reverse claw spring
36	6-280-9501	Ratchet
37	6-636-6711	Click gear
38	6-635-9901	Ball bearing ret. washer
39	6-351-6601	Ball bearing ret. washer screw
40	6-635-4801	Ball bearing
41	6-403-2801	Pinion gear
42	6-831-8801	Body
43	6-351-6601	Cam kick plate screw
44	6-822-9901	Cam kick plate
45	6-352-1102	Anti-reverse claw screw
46	6-833-5601	Anti-reverse claw
47	6-144-0321	Anti-reverse cam spring
48	6-815-6403	Anti-reverse cam
49	6-373-2700	Anti-reverse lever washer
50	6-541-7301	Anti-reverse lever
51	6-352-2501	Anti-reverse lever screw
52	6-636-6011	Ball bearing
53	6-414-2302	Drive gear
54	6-481-2401	Oscillating slider
55	6-371-2800	Drive gear washer
56	6-636-6011	Ball bearing
57	6-831-9901	Body cover
58	6-351-5901	Body cover screw
59	6-836-8501	Handle
60	6-363-4701	Handle screw cap
61	6-502-1401	Roller metal