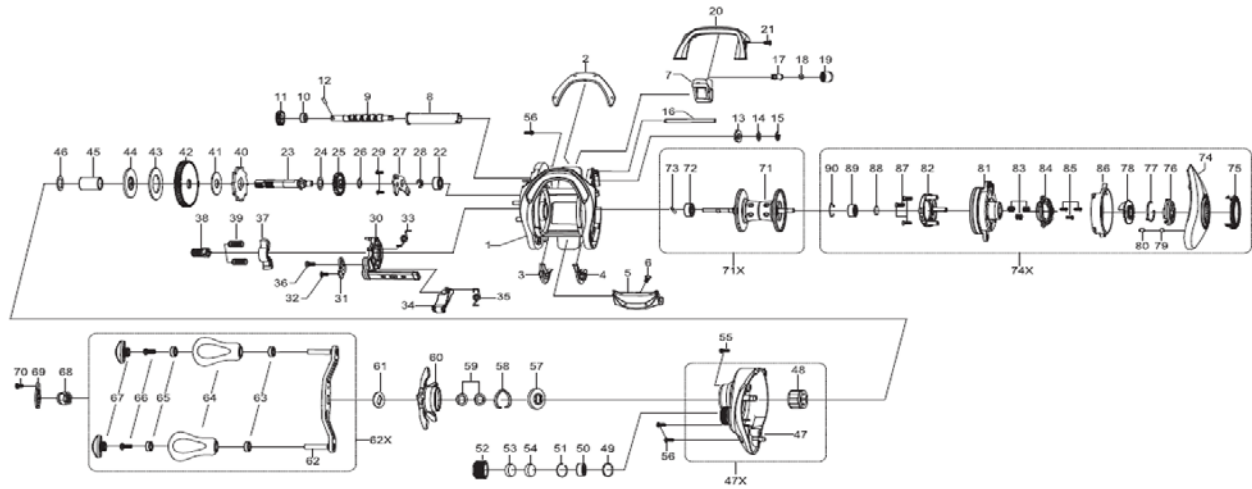




Baitcasting Reel

CC80HSL

Please order by parts number, not key number
 Veuillez indiquer le numéro de la pièce (Non "Key" No.)



| Key No | Part No | Description |
|--------|----------|----------------------|
| 1 | 423-0030 | FRAME |
| 2 | 423-1030 | FRAME PLATE |
| 3 | 420-2010 | SPACER (A) |
| 4 | 420-3010 | SPACER (B) |
| 5 | 420-4010 | CLUTCH LEVER |
| 6 | 150-7030 | SCREW(A) |
| 7 | 352-2010 | T LEVEL WIND |
| 8 | 140-6010 | T LEVEL WIND GUARD |
| 9 | 001-7013 | WORM SHAFT(A) |
| 10 | 260-5010 | BALL BEARING(SPACER) |
| 11 | 001-9010 | WORM SHAFT(B) |
| 12 | 002-0010 | PIN(A) |
| 13 | 243-8010 | SPACER(C) |
| 14 | 053-9020 | WORM SHAFT WASHER |
| 15 | 004-7010 | WORM SHAFT RETAINER |
| 16 | 271-1010 | STABILIZER BAR |
| 17 | 046-4011 | LINE GUIDE PAWL |
| 18 | 002-5020 | LINE GUIDE WASHER |
| 19 | 028-8021 | PAWL CAP |
| 20 | 358-5010 | FRONT PLATE |
| 21 | 014-1020 | SCREW(B) |
| 22 | 295-2010 | BALL BEARING(A) |
| 23 | 117-3030 | DRIVE SHAFT |
| 24 | 054-8010 | WASHER(A) |
| 25 | 193-8020 | WORM GEAR |
| 26 | 004-5020 | WASHER(B) |
| 27 | 358-6010 | PLATE |
| 28 | 004-7010 | RETAINER(A) |
| 29 | 013-5010 | SCREW(D) |
| 30 | 358-2010 | CLUTCH CAM PLATE(A) |
| 31 | 289-4010 | CLUTCH CAM PLATE(B) |
| 32 | 301-4010 | SCREW(E) |
| 33 | 269-0010 | CLUTCH CAM SPRING |
| 34 | 230-8011 | CLUTCH TRIP LEVER |
| 35 | 414-6010 | CLUTCH CAM SPRING |
| 36 | 029-3010 | SCREW(F) |
| 37 | 208-3010 | YOKE |
| 38 | 362-0010 | PINION GEAR |
| 39 | 246-5010 | YOKE SPRINGS |
| 40 | 140-7010 | CLUTCH WHEEL |
| 41 | 377-2010 | DRIVE GEAR WASHER |
| 42 | 296-2010 | DRIVE GEAR |
| 43 | 153-1010 | DRAG WASHER |
| 44 | 136-7010 | KEY WASHER |
| 45 | 041-8011 | GEAR SHAFT COLLAR |

| Key No | Part No | Description |
|--------|----------|--------------------------|
| 46 | 008-6030 | WASHER(C) |
| 47 | 423-3030 | RIGHT SIDE PLATE(A) |
| 48 | 209-0010 | ROLLER CLUTCH |
| 49 | 007-1020 | O-RING |
| 50 | 297-1010 | BALL BEARING(B) |
| 51 | 158-8011 | RETAINER(B) |
| 52 | 429-8030 | CAST CONTROL CAP |
| 53 | 083-4010 | SPACER(D) |
| 54 | 069-0010 | SPACER(E) |
| 55 | 020-2030 | SCREW(G) |
| 56 | 020-2020 | SCREW(H) |
| 57 | 018-8040 | CLICK LEAF SPRING HOLDER |
| 58 | 200-2010 | CLICK LEAF SPRING |
| 59 | 008-8010 | DRAG SPRING WASHER |
| 60 | 420-9030 | STAR DRAG |
| 61 | 093-3010 | HANDLE COLLAR |
| 62 | 421-1010 | HANDLE ASSEMBLY(A) |
| 63 | 019-6010 | BUSHING (A) |
| 64 | 421-3010 | HANDLE KNOB |
| 65 | 019-6010 | BUSHING (B) |
| 66 | 018-0020 | HANDLE SCREW |
| 67 | 421-4010 | CAP |
| 68 | 429-7011 | HANDLE NUT |
| 69 | 421-5030 | HANDLE LOCK PLATE |
| 70 | 120-2020 | SCREW(I) |
| 71 | 424-0030 | SPOOL ASSEMBLY |
| 72 | 297-0010 | BALL BEARING(C) |
| 73 | 012-0010 | PIN(B) |
| 74 | 423-7030 | LEFT SIDE PLATE(A) |
| 75 | 422-1010 | COVER(A) |
| 76 | 422-4010 | BRAKE DIAL |
| 77 | 200-2010 | BRAKE CLICK SPRING |
| 78 | 358-4010 | CAM(A) |
| 79 | 457-9010 | WASHER(D) |
| 80 | 457-8010 | PIN(C) |
| 81 | 422-2010 | COVER(B) |
| 82 | 429-9010 | MAGNET HOLDER ASSEMBLY |
| 83 | 266-5010 | SPRING(B) |
| 84 | 358-3010 | CAM(B) |
| 85 | 052-6020 | SCREW(J) |
| 86 | 423-8010 | LEVER |
| 87 | 014-1010 | SCREW(K) |
| 88 | 185-0010 | SPACER(F) |
| 89 | 297-1010 | BALL BEARING(D) |
| 90 | 297-6010 | BEARING RETAINER |