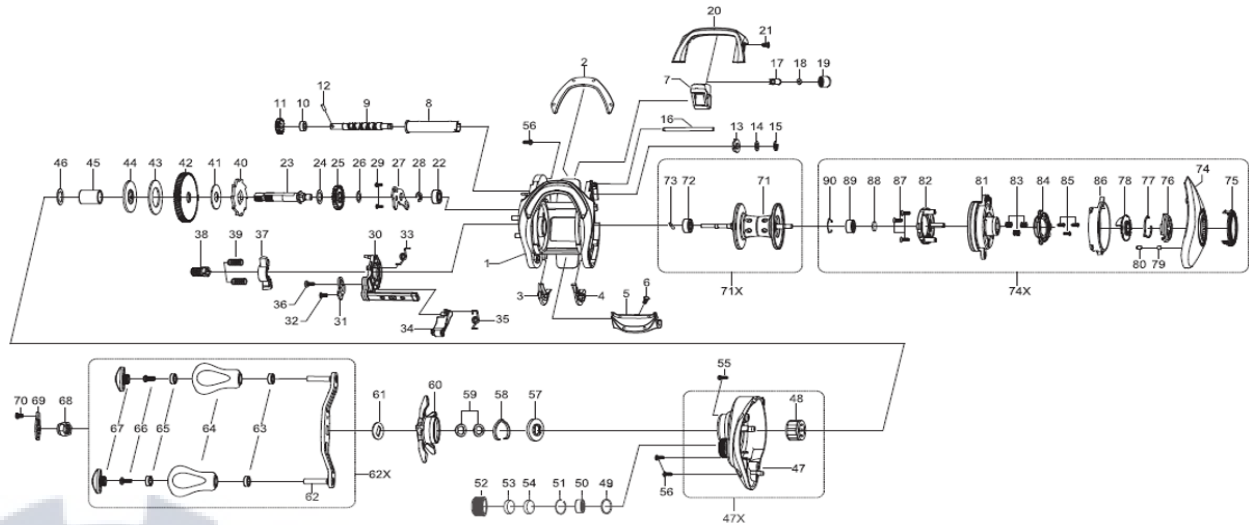


DAIWA

Baitcasting Reel

CG80HSL

Please order by parts number, not key number
 Veuillez indiquer le numéro de la pièce (Non "Key" No.)



Key No	Part No	Description
--------	---------	-------------

1	423-0010	FRAME
2	420-1020	FRAME PLATE
3	420-2010	SPACER (A)
4	420-3010	SPACER (B)
5	420-4010	CLUTCH LEVER
6	150-7030	SCREW(A)
7	352-2010	T LEVEL WIND
8	140-6010	T LEVEL WIND GUARD
9	001-7013	WORM SHAFT(A)
10	295-4010	BALL BEARING(SPACER)
11	001-9010	WORM SHAFT(B)
12	002-0010	PIN(A)
13	243-8010	SPACER(C)
14	053-9020	WORM SHAFT WASHER
15	004-7010	WORM SHAFT RETAINER
16	271-1010	STABILIZER BAR
17	046-4011	LINE GUIDE PAWL
18	002-5020	LINE GUIDE WASHER
19	028-8021	PAWL CAP
20	423-1010	FRONT PLATE
21	014-1020	SCREW(B)
22	295-2010	BALL BEARING(A)
23	117-3030	DRIVE SHAFT
24	054-8010	WASHER(A)
25	193-8020	WORM GEAR
26	004-5020	WASHER(B)
27	358-6010	PLATE
28	004-7010	RETAINER(A)
29	013-5010	SCREW(D)
30	358-5010	CLUTCH CAM PLATE(A)
31	289-4010	CLUTCH CAM PLATE(B)
32	301-4010	SCREW(E)
33	269-0010	CLUTCH CAM SPRING
34	230-8011	CLUTCH TRIP LEVER
35	414-6010	CLUTCH CAM SPRING
36	029-3010	SCREW(F)
37	208-3010	YOKE
38	362-0010	PINION GEAR
39	246-5010	YOKE SPRINGS
40	140-7010	CLUTCH WHEEL
41	377-2010	DRIVE GEAR WASHER
42	296-2010	DRIVE GEAR
43	153-1010	DRAG WASHER
44	136-7010	KEY WASHER
45	041-8011	GEAR SHAFT COLLAR

Key No	Part No	Description
--------	---------	-------------

46	008-6030	WASHER(C)
47	423-3010	RIGHT SIDE PLATE(A)
48	209-0010	ROLLER CLUTCH
49	007-1020	O-RING
50	297-1010	BALL BEARING(B)
51	158-8011	RETAINER(B)
52	429-8010	CAST CONTROL CAP
53	083-4010	SPACER(D)
54	069-0010	SPACER(E)
55	020-2030	SCREW(G)
56	020-2020	SCREW(H)
57	018-8040	CLICK LEAF SPRING HOLDER
58	200-2010	CLICK LEAF SPRING
59	008-8010	DRAG SPRING WASHER
60	420-9030	STAR DRAG
61	093-3010	HANDLE COLLAR
62	421-1010	HANDLE ASSEMBLY(A)
63	295-0010	BALL BEARING (A)
64	421-3010	HANDLE KNOB
65	295-0010	BALL BEARING (B)
66	018-0020	HANDLE SCREW
67	421-4010	CAP
68	429-7011	HANDLE NUT
69	421-5010	HANDLE LOCK PLATE
70	120-2020	SCREW(I)
71	424-0010	SPOOL ASSEMBLY
72	297-0010	BALL BEARING(C)
73	012-0010	PIN(B)
74	423-7010	LEFT SIDE PLATE(A)
75	422-1020	COVER(A)
76	422-4020	BRAKE DIAL
77	200-2010	BRAKE CLICK SPRING
78	358-4010	CAM(A)
79	457-9010	WASHER(D)
80	457-8010	PIN(C)
81	422-2010	COVER(B)
82	429-9010	MAGNET HOLDER ASSEMBLY
83	266-5010	SPRING(B)
84	358-3010	CAM(B)
85	052-6020	SCREW(J)
86	423-8010	LEVER
87	014-1010	SCREW(K)
88	185-0010	SPACER(F)
89	297-1010	BALL BEARING(D)
90	297-6010	BEARING RETAINER