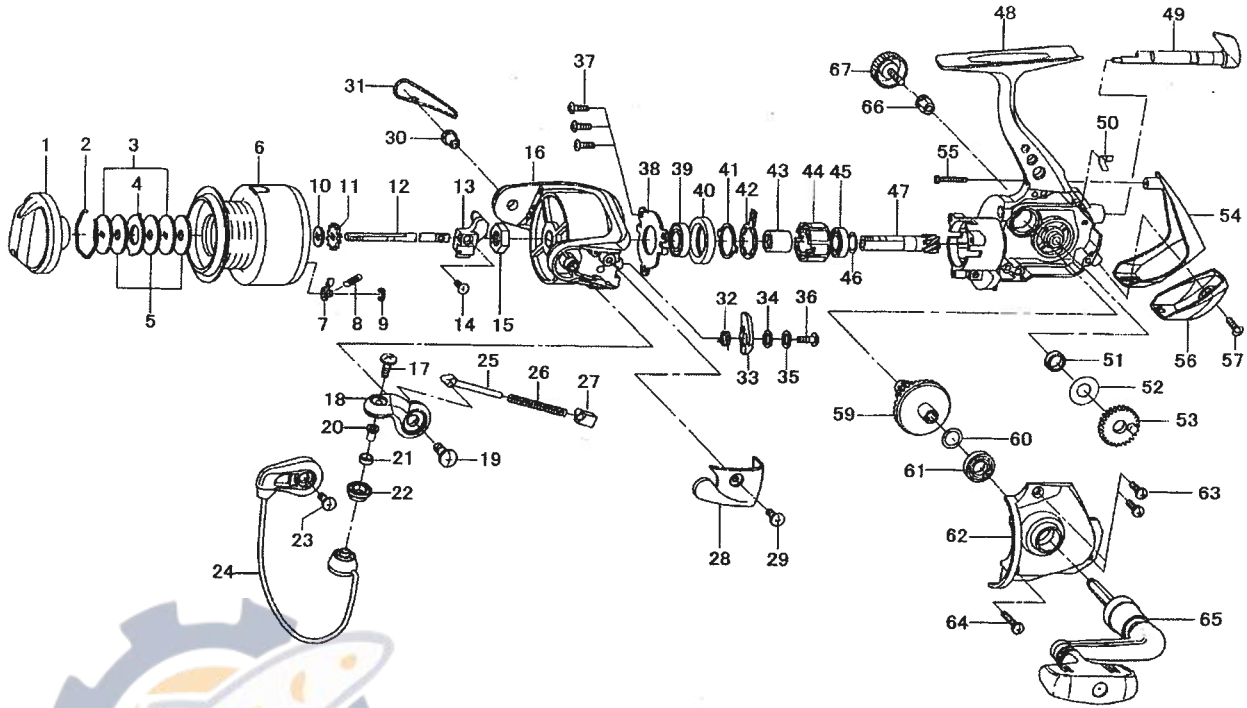


CAPRICE 3500 / 4000



Key No.	Parts No.	Parts Name	Key No.	Parts No.	Parts Name
1	G35-5701	DRAG KNOB	36	G19-3701	BAIL TRIP LEVER SCREW
2	F37-3301	DRAG WASHER RET	37	G33-2701	BEARING RET SCREW
3	F09-4901	KEY WASHER	38	G35-3701	BEARING RET
4	373-3603	EARED WASHER	39	G35-3401	BALL BEARING A
5	E13-6001	DRAG WASHER	40	G35-3601	BALL BEARING COLLAR
2-9	G35-5501	SPOOL	41	F64-1501	CLUTCH CAM RET
7	B07-5304	CLICK PAWL	42	F64-1401	CLUTCH CAM
8	E40-3101	CLICK SPRING	43	G35-3501	SPACING SLEEVE
9	320-5901	CLICK RET	44	G31-4501	ROLLER CLUTCH
10	F09-4701	SPOOL WASHER	45	G35-3401	BALL BEARING B
11	E46-2701	CLICK GEAR	46	373-7814	PINION WASHER
12	G02-5701	MAIN SHAFT	47	G02-5301	PINION GEAR
13	G02-5501	OSC SLIDER	48	G35-5301	BODY
14	352-1505	OSC SLIDER SCREW	49	G19-3111	A/R LEVER
15	G12-3301	ROTOR NUT	50	G19-3301	A/R CAM SPRING
16	G23-0207	ROTOR	51	F13-1601	OSC GEAR COLLAR
17	G01-8601	LINE ROLLER SCREW	52	G13-1700	OSC GEAR WASHER
18	G19-4505	BAIL ARM	53	F74-7801	OSC GEAR
19	G22-4901	BAIL ARM SCREW	54	G35-3902	REAR COVER A
20	G15-2501	LINE ROLLER COLLAR	55	G34-3701	REAR COVER SCREW A
21	G17-3801	LINE ROLLER BUSHING	56	G35-4001	REAR COVER B
22	F62-5001	LINE ROLLER	57	G33-2701	REAR COVER SCREW B
23	351-6101	BAIL HOLDER SCREW	59	G02-5601	DRIVE GEAR
24	G35-4102	BAIL	60	373-7808	DRIVE GEAR WASHER
25	G01-7502	BAIL SPRING SHAFT	61	631-6901	BALL BEARING C
26	G14-8601	BAIL SPRING	62	G35-3804	SIDE COVER
27	G01-7401	BAIL SPRING HOLDER	63	G33-2902	SIDE COVER SCREW A
28	G23-0302	BAIL SPRING COVER	64	G33-3002	SIDE COVER SCREW B
29	G20-5101	BAIL SPRING COVER SCREW	65	G35-5401	HANDLE
30	G19-5101	BAIL HOLDER NUT	66	F72-1201	HANDLE COLLAR
31	G35-4301	BAIL HOLDER COVER	67	F67-6509	HANDLE SCREW
32	G19-4101	BAIL TRIP LEVER SPRING			
33	G26-5501	BAIL TRIP LEVER			
34	375-3002	BAIL TRIP LEVER WASHER A			
35	375-3003	BAIL TRIP LEVER WASHER B			

SPECIAL PART FOR CP4000

Key No.	Parts No.	Parts Name
2-9	G35-6201	SPOOL