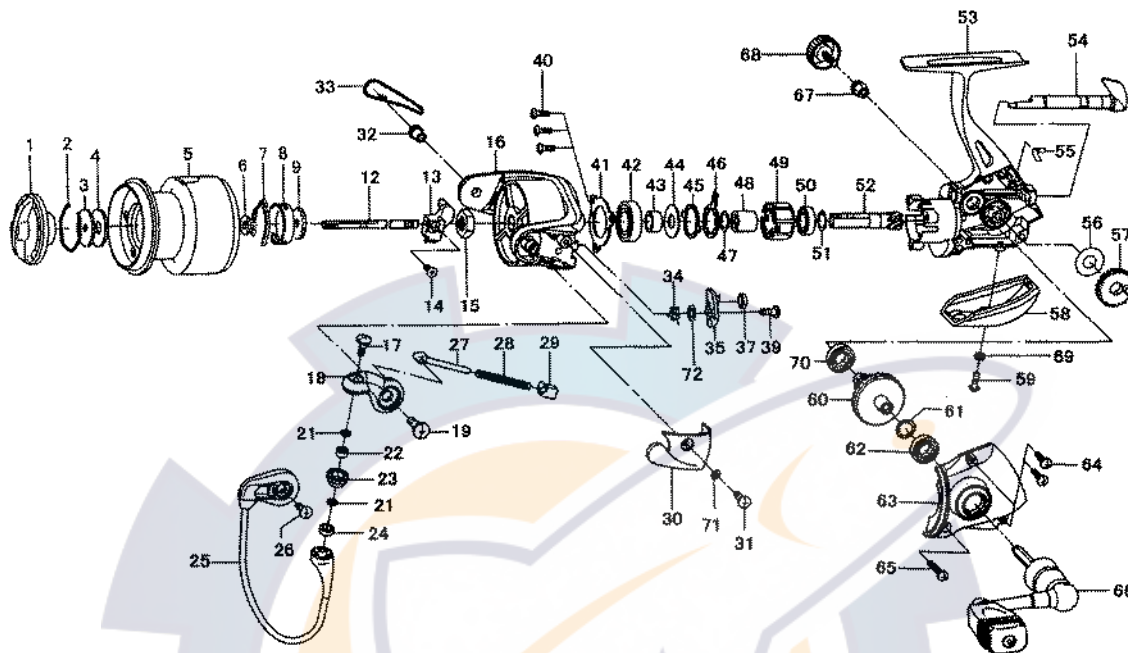


Daiwa
COMMITTED TO TOTAL QUALITY
SPINNING REEL

CAPRICORN 1500A/2000A



Key No.	Parts No.	Parts Name
1	G24-7401	DRAG KNOB
2	F37-3301	DRAG WASHER RET
3	E46-7201	KEY WASHER
4	E13-6001	DRAG WASHER
2-5	G48-3101	SPOOL
6	E46-7101	SPOOL WASHER
7	F70-4901	SPOOL CLICK LEAF SPRING
8	E12-2308	CLICK LEAF SPRING HOLDER
9	F81-1501	CLICK GEAR
12	G29-1401	MAIN SHAFT
13	G06-1601	OSC SLIDER
14	351-0315	OSC SLIDER SCREW
15	F33-6102	ROTOR NUT
16	G20-6203	ROTOR
17	G19-5601	LINE ROLLER SCREW
18	G20-6401	BAIL ARM
19	G22-4901	BAIL ARM SCREW
21	F89-7101	LINE ROLLER WASHER
22	G28-1601	BALL BEARING A
23	F92-1601	LINE ROLLER
24	G04-7601	LINE ROLLER COLLAR
25	G20-6601	BAIL
26	351-6101	BAIL HOLDER SCREW
27	G01-7503	BAIL SPRING SHAFT
28	G06-2401	BAIL SPRING
29	G01-7401	BAIL SPRING HOLDER
30	G20-6507	BAIL SPRING COVER
31	G20-5101	BAIL SPRING COVER SCREW
32	G19-5101	BAIL HOLDER NUT
33	G48-3001	BAIL HOLDER COVER
34	G47-3901	BAIL TRIP LEVER SPRING
35	G26-5701	BAIL TRIP LEVER
37	G19-4301	BRAKE SHOE
39	G19-3701	BAIL TRIP LEVER SCREW
40	G33-2701	BEARING RET SCREW
41	G19-3601	BEARING RET

Key No.	Parts No.	Parts Name
42	G47-2501	BALL BEARING B
43	G19-3501	BALL BEARING COLLAR
44	B27-5403	BALL BEARING WASHER
45	F62-2301	CLUTCH CAM RET
46	F62-2201	CLUTCH CAM
47	375-8502	CLUTCH CAM WASHER
48	F73-2501	SPACING SLEEVE
49	G22-0601	ROLLER CLUTCH
50	G27-9601	BALL BEARING C
51	375-8504	PINION GEAR WASHER
52	G29-1101	PINION GEAR
53	G48-2901	BODY
54	G19-3102	A/R LEVER
55	G19-3301	A/R CAM SPRING
56	G11-4300	OSC GEAR WASHER
57	F69-1702	OSC GEAR
58	G20-6105	REAR COVER
59	G40-0102	REAR COVER SCREW
60	G06-1701	DRIVE GEAR
61	375-8500	DRIVE GEAR WASHER
62	637-5702	BALL BEARING D
63	G20-6003	SIDE COVER
64	G33-2902	SIDE COVER SCREW A
65	G33-3002	SIDE COVER SCREW B
66	G24-7101	HANDLE
67	F72-1001	HANDLE COLLAR
68	F67-6513	HANDLE SCREW
69	G25-6401	REAR COVER WASHER
70	F01-6401	BALL BEARING E
71	G25-6401	BAIL SPRING COVER WASHER
72	375-3005	BAIL TRIP LEVER WASHER

SPECIAL PART FOR CA2000A

Key No.	Parts No.	Parts Name
2-5	G48-3301	SPOOL