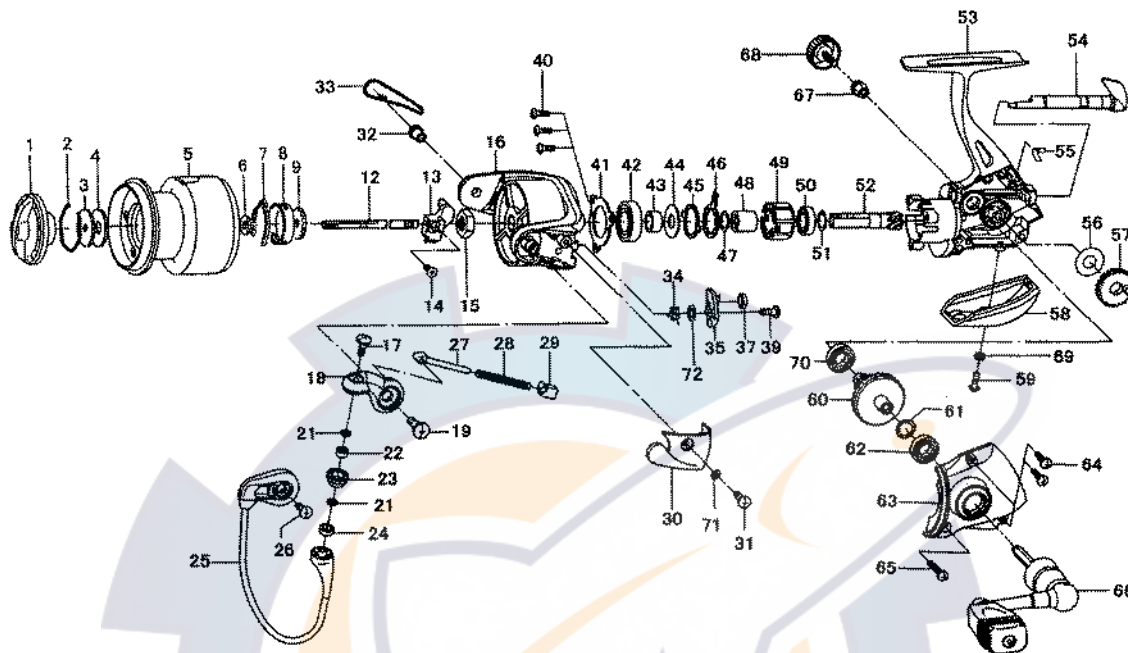


Daiwa
COMMITTED TO TOTAL QUALITY
SPINNING REEL

CAPRICORN 1500A/2000A



| Key No. | Parts No. | Parts Name |
|---------|-----------|--------------------------|
| 1 | G24-7401 | DRAG KNOB |
| 2 | F37-3301 | DRAG WASHER RET |
| 3 | E46-7201 | KEY WASHER |
| 4 | E13-6001 | DRAG WASHER |
| 2-5 | G48-3101 | SPOOL |
| 6 | E46-7101 | SPOOL WASHER |
| 7 | F70-4901 | SPOOL CLICK LEAF SPRING |
| 8 | E12-2308 | CLICK LEAF SPRING HOLDER |
| 9 | F81-1501 | CLICK GEAR |
| 12 | G29-1401 | MAIN SHAFT |
| 13 | G06-1601 | OSC SLIDER |
| 14 | 351-0315 | OSC SLIDER SCREW |
| 15 | F33-6102 | ROTOR NUT |
| 16 | G20-6203 | ROTOR |
| 17 | G19-5601 | LINE ROLLER SCREW |
| 18 | G20-6401 | BAIL ARM |
| 19 | G22-4901 | BAIL ARM SCREW |
| 21 | F89-7101 | LINE ROLLER WASHER |
| 22 | G28-1601 | BALL BEARING A |
| 23 | F92-1601 | LINE ROLLER |
| 24 | G04-7601 | LINE ROLLER COLLAR |
| 25 | G20-6601 | BAIL |
| 26 | 351-6101 | BAIL HOLDER SCREW |
| 27 | G01-7503 | BAIL SPRING SHAFT |
| 28 | G06-2401 | BAIL SPRING |
| 29 | G01-7401 | BAIL SPRING HOLDER |
| 30 | G20-6507 | BAIL SPRING COVER |
| 31 | G20-5101 | BAIL SPRING COVER SCREW |
| 32 | G19-5101 | BAIL HOLDER NUT |
| 33 | G48-3001 | BAIL HOLDER COVER |
| 34 | G47-3901 | BAIL TRIP LEVER SPRING |
| 35 | G26-5701 | BAIL TRIP LEVER |
| 37 | G19-4301 | BRAKE SHOE |
| 39 | G19-3701 | BAIL TRIP LEVER SCREW |
| 40 | G33-2701 | BEARING RET SCREW |
| 41 | G19-3601 | BEARING RET |

| Key No. | Parts No. | Parts Name |
|---------|-----------|--------------------------|
| 42 | G47-2501 | BALL BEARING B |
| 43 | G19-3501 | BALL BEARING COLLAR |
| 44 | B27-5403 | BALL BEARING WASHER |
| 45 | F62-2301 | CLUTCH CAM RET |
| 46 | F62-2201 | CLUTCH CAM |
| 47 | 375-8502 | CLUTCH CAM WASHER |
| 48 | F73-2501 | SPACING SLEEVE |
| 49 | G22-0601 | ROLLER CLUTCH |
| 50 | G27-9601 | BALL BEARING C |
| 51 | 375-8504 | PINION GEAR WASHER |
| 52 | G29-1101 | PINION GEAR |
| 53 | G48-2901 | BODY |
| 54 | G19-3102 | A/R LEVER |
| 55 | G19-3301 | A/R CAM SPRING |
| 56 | G11-4300 | OSC GEAR WASHER |
| 57 | F69-1702 | OSC GEAR |
| 58 | G20-6105 | REAR COVER |
| 59 | G40-0102 | REAR COVER SCREW |
| 60 | G06-1701 | DRIVE GEAR |
| 61 | 375-8500 | DRIVE GEAR WASHER |
| 62 | 637-5702 | BALL BEARING D |
| 63 | G20-6003 | SIDE COVER |
| 64 | G33-2902 | SIDE COVER SCREW A |
| 65 | G33-3002 | SIDE COVER SCREW B |
| 66 | G24-7101 | HANDLE |
| 67 | F72-1001 | HANDLE COLLAR |
| 68 | F67-6513 | HANDLE SCREW |
| 69 | G25-6401 | REAR COVER WASHER |
| 70 | F01-6401 | BALL BEARING E |
| 71 | G25-6401 | BAIL SPRING COVER WASHER |
| 72 | 375-3005 | BAIL TRIP LEVER WASHER |

SPECIAL PART FOR CA2000A

| Key No. | Parts No. | Parts Name |
|---------|-----------|------------|
| 2-5 | G48-3301 | SPOOL |