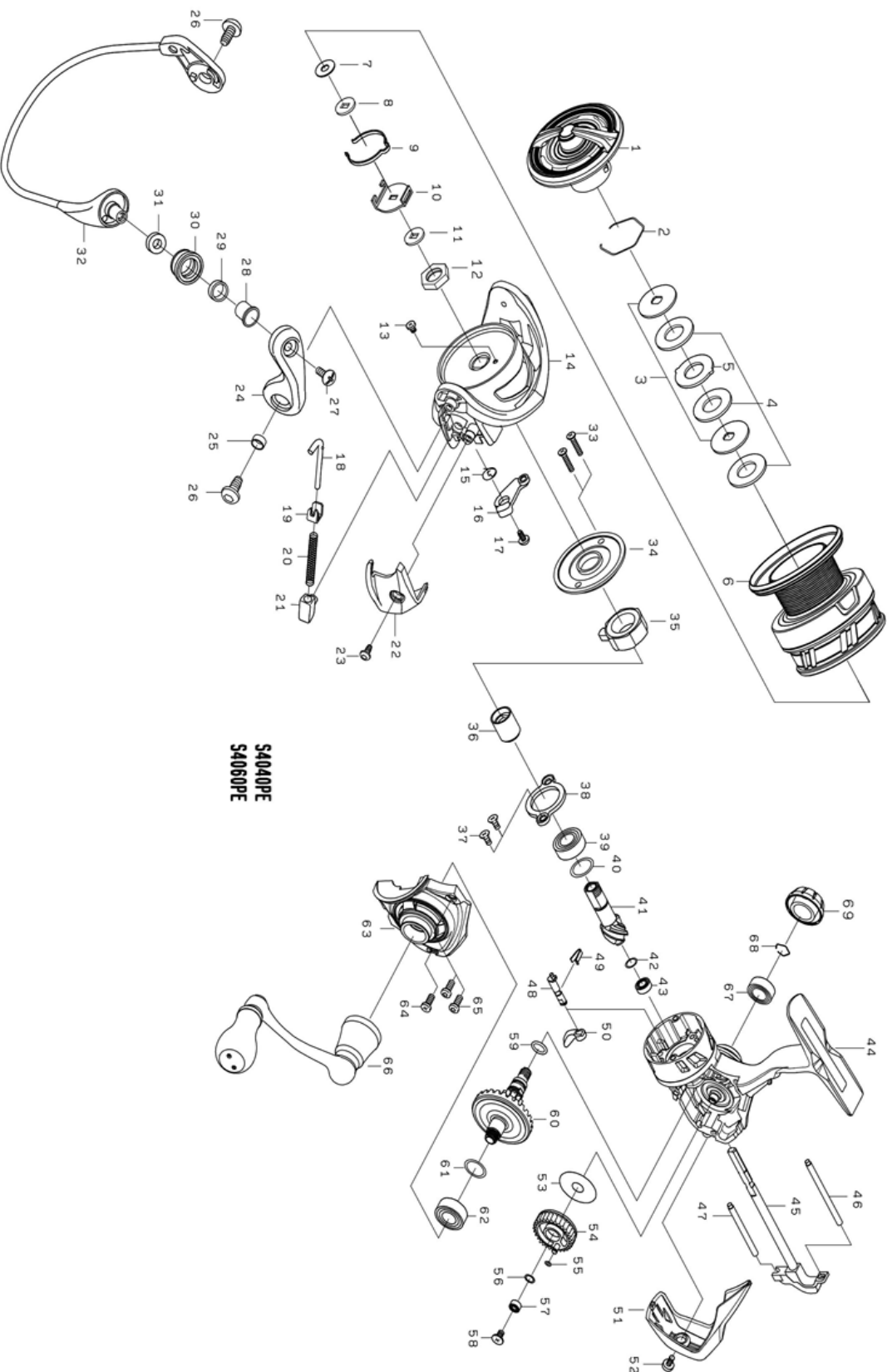




20 EMERALDAS X LT 2500S

Feel Alive.

Please quote by part number, not key number when ordering.
spares@daiwaaustralia.com.au PH: (02) 8644 8644



S4040PE
S4060PE

REEL NAME	MGFT CODE	KEY NO	PARTS CODE	DESCRIPTION
20 EMERALDAS X LT 2500S H		1	6Q424401	DRAG KNOB
20 EMERALDAS X LT 2500S H		2	6Q346101	DRAG WASHER RETAINER
20 EMERALDAS X LT 2500S H		3	6J547001	KEY WASHER
20 EMERALDAS X LT 2500S H		4	6J546801	DRAG WASHER
20 EMERALDAS X LT 2500S H		5		EARED WASHER
20 EMERALDAS X LT 2500S H		6	6Q672601	SPOOL ASSEMBLY
20 EMERALDAS X LT 2500S H		7	6E398003	WASHER (A)
20 EMERALDAS X LT 2500S H		8	6Q348502	WASHER (B)
20 EMERALDAS X LT 2500S H		9	6H416101	SPOOL CLICK LEAF SPRING
20 EMERALDAS X LT 2500S H		10	6M021401	CLICK LEAF SPRING HOLDER
20 EMERALDAS X LT 2500S H		11	6Q344001	WASHER (C)
20 EMERALDAS X LT 2500S H		12	6Q122401	ROTOR NUT
20 EMERALDAS X LT 2500S H		13	6H022701	SCREW (A)
20 EMERALDAS X LT 2500S H		14	6Q343004	ROTOR
20 EMERALDAS X LT 2500S H		15	6H413601	BAIL TRIP LEVER SPRING
20 EMERALDAS X LT 2500S H		16	6Q343101	BAIL TRIP LEVER
20 EMERALDAS X LT 2500S H		17	6H417701	SCREW (B)
20 EMERALDAS X LT 2500S H		18	6Q343301	BAIL SPRING SHAFT
20 EMERALDAS X LT 2500S H		19	6H576101	BAIL SPRING PLATE
20 EMERALDAS X LT 2500S H		20	6J642801	BAIL SPRING
20 EMERALDAS X LT 2500S H		21	6Q121501	BAIL SPRING HOLDER
20 EMERALDAS X LT 2500S H		22	6Q343502	COVER (A)
20 EMERALDAS X LT 2500S H		23	6Q342901	SCREW (C)
20 EMERALDAS X LT 2500S H		24	6Q121609	BAIL ARM
20 EMERALDAS X LT 2500S H		25	6Q121701	COLLAR (A)
20 EMERALDAS X LT 2500S H		26	6Q343401	SCREW (D)
20 EMERALDAS X LT 2500S H		27	6G195602	SCREW (E)
20 EMERALDAS X LT 2500S H		28	6G195501	COLLAR (B)
20 EMERALDAS X LT 2500S H		29	6G220701	COLLAR (C)
20 EMERALDAS X LT 2500S H		30	6J089901	LINE ROLLER
20 EMERALDAS X LT 2500S H		31	6Q203401	COLLAR (D)
20 EMERALDAS X LT 2500S H		32	6Q522601	BAIL ASSEMBLY
20 EMERALDAS X LT 2500S H		33	6G837101	SCREW (F)
20 EMERALDAS X LT 2500S H		34	6Q139401	CAP
20 EMERALDAS X LT 2500S H		35	6Q308301	ROLLER CLUTCH
20 EMERALDAS X LT 2500S H		36	6J001401	SPACING SLEEVE
20 EMERALDAS X LT 2500S H		37	6Q126201	SCREW (G)
20 EMERALDAS X LT 2500S H		38	6Q195601	BEARING RETAINER (A)
20 EMERALDAS X LT 2500S H		39	6G467305	BALL BEARING (A)
20 EMERALDAS X LT 2500S H		40	63758502	WASHER (D)
20 EMERALDAS X LT 2500S H		41	6Q243501	PINION GEAR
20 EMERALDAS X LT 2500S H		42	6H931701	SPRING WASHER
20 EMERALDAS X LT 2500S H		43	6H959601	BALL BEARING (B)
20 EMERALDAS X LT 2500S H		44	6Q672401	BODY
20 EMERALDAS X LT 2500S H		45	6Q341501	MAIN SHAFT
20 EMERALDAS X LT 2500S H		46	6Q126301	STABILIZER BAR (A)
20 EMERALDAS X LT 2500S H		47	6Q119101	STABILIZER BAR (B)
20 EMERALDAS X LT 2500S H		48	6Q118101	ANTI REVERSE CAM
20 EMERALDAS X LT 2500S H		49	6H697801	ANTI REVERSE CAM SPRING
20 EMERALDAS X LT 2500S H		50	6Q118001	ANTI REVERSE LEVER
20 EMERALDAS X LT 2500S H		51	6Q342802	REAR COVER
20 EMERALDAS X LT 2500S H		52	6Q342901	SCREW (H)
20 EMERALDAS X LT 2500S H		53	6H595701	WASHER (E)
20 EMERALDAS X LT 2500S H		54	6Q139001	OSCILLATE GEAR
20 EMERALDAS X LT 2500S H		55	6H770601	O RING (A)
20 EMERALDAS X LT 2500S H		56	6H129201	WASHER (F)
20 EMERALDAS X LT 2500S H		57	6G469007	BALL BEARING (C)
20 EMERALDAS X LT 2500S H		58	6Q126101	SCREW (I)
20 EMERALDAS X LT 2500S H		59	6G670501	O RING (B)
20 EMERALDAS X LT 2500S H		60	6Q523301	DRIVE GEAR

