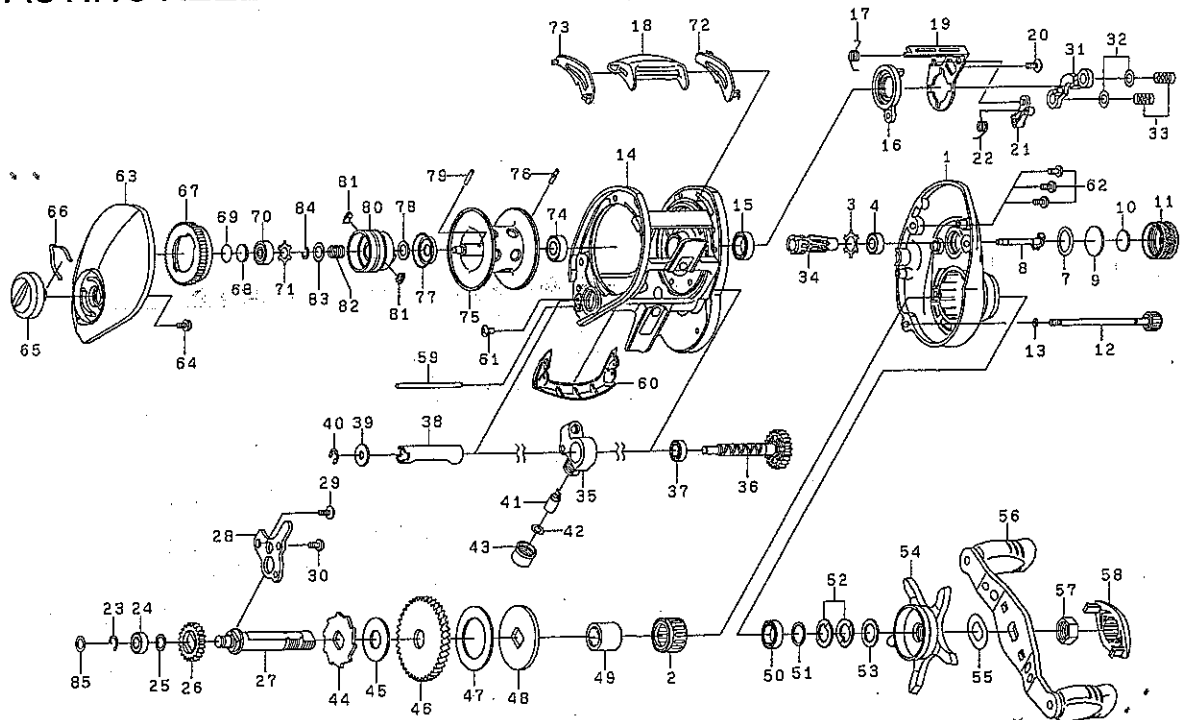


Daiwa
COMMITTED TO TOTAL QUALITY
BAITCASTING REEL

EXCELER 100H DA



Key No.	Parts No.	Parts Name	Key No.	Parts No.	Parts Name
1	6H000616	Right side plate	40	63205901	Worm shaft retainer
2	6G930501	Roller clutch	41	6F516501	Line guide pawl
3	6H180601	Bearing retainer (A)	42	63731300	Line guide washer
4	6B358607	Ball bearing (A)	43	6F402801	Pawl cap
7	6B055201	"O" Ring (A)	44	6G934301	Clutch wheel
8	6G931001	Pinion shaft	45	6G934401	Drive shaft washer
9	63757501	Spool adjusting cap metal	46	6H001901	Drive gear (B)
10	6B175503	Spacer (A)	47	6G934601	Drag washer
11	6H213601	Cast control cap	48	6G934701	Key washer
12	6G931101	Right side plate screw (A)	49	6G934802	Gear shaft collar
13	6B853101	"O" Ring (B)	50	6B861704	Ball bearing (B)
14	6H013409	Frame	51	6B553801	Bearing washer
15	6B861704	Ball bearing (B)	52	61508901	Drag spring washer
16	6G931601	Clutch cam (A)	53	63737810	Spacing sleeve
17	6G931701	Clutch cam spring (A)	54	6H108901	Star drag
18	6G931801	Clutch lever	55	61509001	Friction washer
19	6G931901	Clutch cam (B)	56	6H013802	Handle assembly
20	63522501	Clutch cam screw	57	6F849903	Handle nut
21	6G932001	Clutch trip lever	58	6G969901	Handle nut plate
22	6G932101	Clutch cam spring (B)	59	6H002401	Stabilizer bar
23	63208002	Retainer (A)	60	6H014202	Front plate
24	6B358607	Ball bearing (A)	61	6G611501	Front plate screw
25	6E096501	Washer (A)	62	63511001	Right side plate screw (B)
26	6G932201	Drive gear (A)	63	6H265801	Left side plate
27	6G932301	Drive shaft	64	6F212201	Set plate screw
28	6G932401	Drive shaft retainer	65	6G936217	Brake adjusting knob
29	63522501	Drive shaft retainer screw (A)	66	6H084401	Brake click spring
30	63511001	Drive shaft retainer screw (B)	67	6H029701	Magnet holder
31	6G933501	Yoke	68	63757411	Spacer (B)
32	6B411706	Yoke washer	69	63757404	Spacer (C)
33	6G850301	Yoke spring	70	6G511507	Ball bearing (C)
34	6H001601	Pinion gear	71	6H180501	Bearing retainer (B)
35	6H001703	Line guide	72	6H013501	Spacer (D)
36	6G939901	Worm shaft assembly	73	6H013601	Spacer (E)
37	6G051701	Bearing (A)	74-84	6Z019117	Spool assembly
38	6G934201	Level wind guard	85	6H306600	Washer (B)
39	6F655501	Worm shaft washer			