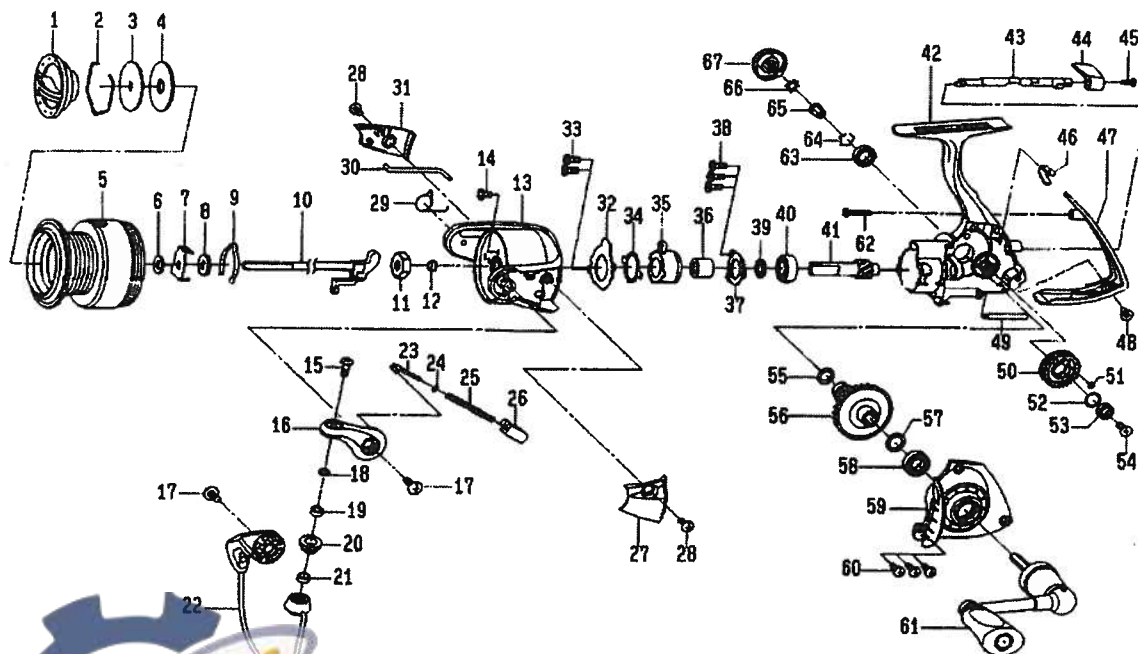


SPINNING REEL EXCELER 1500/2000



Key No.	Parts No.	Parts Name
1	G72-5601	DRAG KNOB
2	F88-4001	DRAG WASHER RET
3	G70-0601	KEY WASHER
4	F69-1001	DRAG WASHER
2-5	G72-5301	SPOOL
2-5	G77-5301	SPOOL (EXTRA)
6	E46-7101	SPOOL WASHER
7	G70-0001	CLICK LEAF SPRING HOLDER
8	E24-6101	CLICK LEAF SPRING WASHER
9	F70-4901	SPOOL CLICK LEAF SPRING
10	G72-4401	MAIN SHAFT
11	G69-9801	ROTOR NUT
12	G69-9701	ROTOR NUT COLLAR
13	G63-0509	ROTOR
14	G62-7701	ROTOR NUT LOCK SCREW
15	G19-5602	LINE ROLLER SCREW
16	G61-2310	BAIL ARM
17	G20-5001	BAIL ARM SCREW
18	F89-7101	LINE ROLLER WASHER
19	G28-1601	BALL BEARING A
20	F62-5001	LINE ROLLER
21	F70-1801	LINE ROLLER COLLAR
22	G72-5001	BAIL
23	G47-1801	BAIL SPRING SHAFT
24	E31-3901	BAIL SPRING WASHER
25	G47-1701	BAIL SPRING
26	G61-2101	BAIL SPRING HOLDER
27	G63-0601	BAIL SPRING COVER
28	G27-0801	BAIL SPRING COVER SCREW
29	G61-3101	BAIL TRIP LEVER SPRING
30	G63-0801	BAIL TRIP LEVER
31	G63-0901	BAIL TRIP LEVER COVER
32	G61-1201	ROLLER CLUTCH RET
33	G55-7101	ROLLER CLUTCH RET SCREW
34	G46-5401	CLUTCH CAM RET
35	G53-9201	ROLLER CLUTCH
36	G71-6201	SPACING SLEEVE

Key No.	Parts No.	Parts Name
37	G46-7402	BEARING RET
38	G55-7101	BEARING RET SCREW
39	375-8509	BEARING RET WASHER
40	G53-5101	BALL BEARING B
41	G72-4601	PINION GEAR
42	G72-4201	BODY
43	G69-8601	A/R CAM
44	G69-9402	A/R LEVER
45	G69-9501	A/R LEVER SCREW
45	G72-6201	A/R CAM SPRING
47	G72-4901	REAR COVER
48	G33-2702	REAR COVER SCREW A
49	G62-9902	STABILIZER BAR
50	G62-9502	OSC GEAR
51	G46-6001	O RING A
52	G46-6100	OSC GEAR WASHER
53	F05-5602	BALL BEARING C
54	F20-6902	OSC GEAR SCREW
55	G67-0501	O RING B
56	G69-9001	DRIVE GEAR
57	375-8500	DRIVE GEAR WASHER
58	G46-7302	BALL BEARING D
59	G72-4701	SIDE COVER
60	G33-2902	SIDE COVER SCREW
61	G72-5201	HANDLE
62	E11-9602	REAR COVER SCREW B
63	F01-6401	BALL BEARING E
64	G47-2401	BALL BEARING RET
65	F72-1001	HANDLE COLLAR
66	160-8101	LOCK WASHER
67	G70-0201	HANDLE SCREW

EXC2000 Special Parts

Key No.	Parts No.	Parts Name
2-5	G72-6301	SPOOL
2-5	G77-5601	SPOOL (EXTRA)