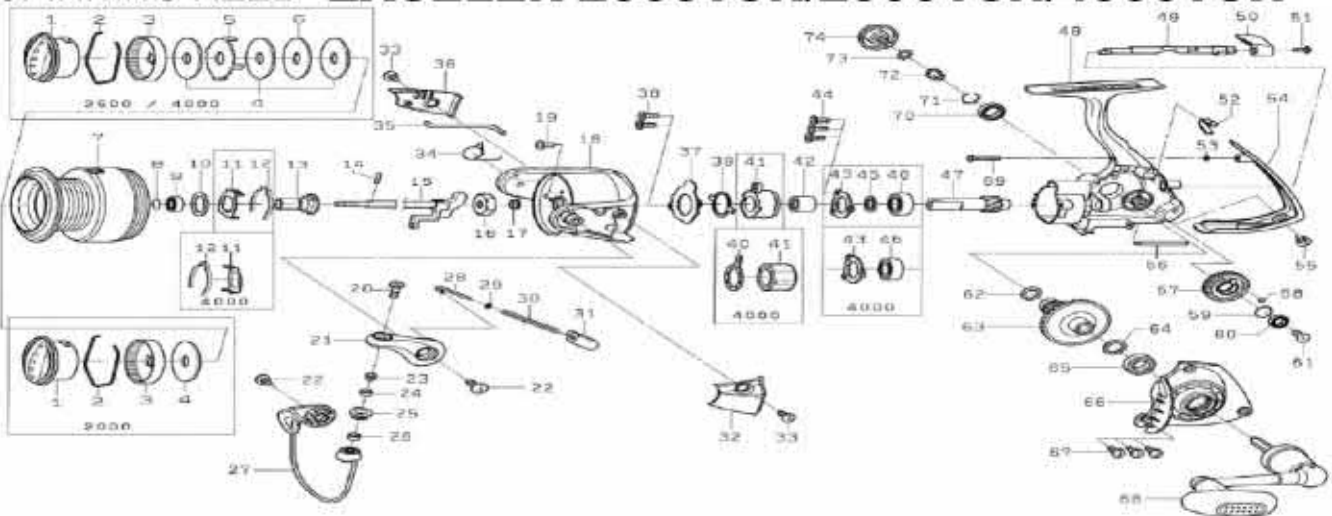




Please order by parts number, not key number  
Veuillez indiquer le numéro de la pièce (Non "Key" No.)

# SPINNING REEL EXCELER 2000TSH/2500TSH/4000TSH



Key No.	EXCELER 2000TSH Parts No.	Parts Name	EXCELER 2500TSH Parts No.	EXCELER 4000TSH Parts No.
1	H54-2601	Drag Knob	H54-2601	H30-3302
2	F74-2501	Drag Washer Retainer	F74-2501	F71-0001
3	F90-8701	Drag Knob Click Plate	F90-8701	F89-5302
4	F63-5001	End Washer	F63-5001	F62-7101
5	-	Hard Washer	F63-5201	F62-7301
6	-	Washer	F63-5101	F64-4701
2-7	H54-2301	Spool Assembly	H54-4201	H54-5001
8	G47-2401	Collar Retainer	G47-2401	G52-5101
9	G72-0401	Collar (A)	G72-0401	G74-7401
10	G69-3501	Washer (A)	G62-5500	F64-3500
11	G69-3501	Click Gear Spring Holder	G69-3501	G69-3501
12	G69-3501	Spool (C) Left Spring	G69-3501	F69-9002
13	G69-3501	Spool (C) Right Spring	G69-3501	F69-9002
14	G69-3501	Pinion Gear	G69-3501	F64-2301
15	G69-3501	Main Shaft	G69-3501	F64-3601
16	G69-3501	Rotor Nut	G69-3501	G69-3501
17	G69-3501	Collar (B)	G69-3501	G69-3501
18	G69-3501	Rotor	G69-3501	G69-3501
19	G69-3501	Screw (A)	G69-3501	G69-3501
20	G69-3501	Screw (B)	G69-3501	G69-3501
21	G69-3501	Bail Arm	G69-3501	G69-3501
22	G69-3501	Screw (C)	G69-3501	G69-3501
23	G69-3501	Collar (C)	G69-3501	G69-3501
24	G69-3501	Collar (D)	G69-3501	G69-3501
25	F62-5001	Line Roller	F62-5001	F62-5001
26	G87-4201	Collar (E)	G87-4201	G87-4201
27	G72-5003	Bail Assembly	G70-3403	G74-3602
28	G47-1805	Bail Spring Shaft	G47-1805	G29-8201
29	E31-3901	Washer (B)	E31-3901	E31-3901
30	G47-1701	Bail Spring	G47-1701	G64-6201
31	G61-2101	Bail Spring Holder	G61-2101	G61-2103
32	G63-0603	Cover (A)	G61-2503	G64-6303
33	G27-0801	Screw (D)	G27-0801	G27-0801
34	G61-3101	Bail Trip Lever Spring	G61-3101	G61-3101
35	G63-0801	Bail Trip Lever	G61-3001	G64-6501
36	G63-0903	Cover (B)	G61-3203	G64-6503
37	G61-1201	Roller Clutch Retainer	G61-1201	G67-7401
38	G55-7101	Screw (E)	G55-7101	G55-7101
39	G46-5401	Clutch Cam Retainer	G46-5401	F64-1501
40	-	Clutch Cam	-	F64-1401
41	G53-9201	Roller Clutch	G53-9201	G31-4501
42	G71-6201	Spacing Sleeve	G71-6201	G74-3001
43	G46-7402	Bearing Retainer (A)	G46-7402	G52-2901
44	G55-7101	Screw (F)	G55-7101	E13-4509
45	375-8509	Washer (C)	375-8509	-
46	G53-5101	Ball Bearing (A)	G53-5101	G52-2801
47	H54-1901	Pinion Gear	H54-3701	H54-4601
48	H54-1801	Body	H54-2701	H54-4501
49	G69-8501	Anti-Reverse Cam	G69-8501	G74-2501
50	G69-9418	Anti-Reverse Lever	G69-9418	G69-9418
51	G69-9501	Screw (G)	G69-9501	G69-9501
52	G72-6201	Anti-Reverse Cam Spring	G72-6201	G72-6201
53	F03-7400	Washer (D)	F03-7400	F03-7400
54	G72-4902	Rear Cover	G69-9302	G74-3502
55	G33-2704	Screw (H)	G33-2704	G33-2704
56	G62-9902	Stabilizer bar	G61-0802	G64-4702
57	G62-9502	Oscillating Gear	G61-0202	H54-5301
58	G46-6001	"O" Ring (A)	G46-6001	B85-3101
59	G46-6100	Washer (E)	G46-6100	G52-2100
60	G46-6201	Ball Bearing (B)	G46-6201	G46-7101
61	F20-6902	Screw (I)	F20-6902	B70-3401
62	G07-0501	"O" Ring (B)	G07-0501	G64-5301
63	H54-2001	Drive Gear	H54-2001	H54-4701
64	375-8500	Washer (F)	375-8500	373-7800
65	G46-7301	Ball Bearing (C)	G46-7301	G52-3403
66	H54-2101	Side Cover	H54-3801	H54-4801
67	G33-2904	Screw (J)	G33-2904	G33-2904
68	H54-2201	Handle Assembly	H54-4101	H54-4901
69	E11-9602	Screw (K)	E11-9602	E11-9602
70	G52-2701	Ball Bearing (D)	G52-2701	G43-1002
71	G47-2401	Bearing Retainer (B)	G47-2401	G52-5101
72	F72-1001	Collar (F)	F72-1001	F72-1202
73	160-5101	Washer (G)	160-5101	160-5101
74	G70-0202	Handle Screw	G70-0202	G74-4202
2-7	H54-6401	Spool Assembly (Extra Spool)	H54-6701	H54-7001