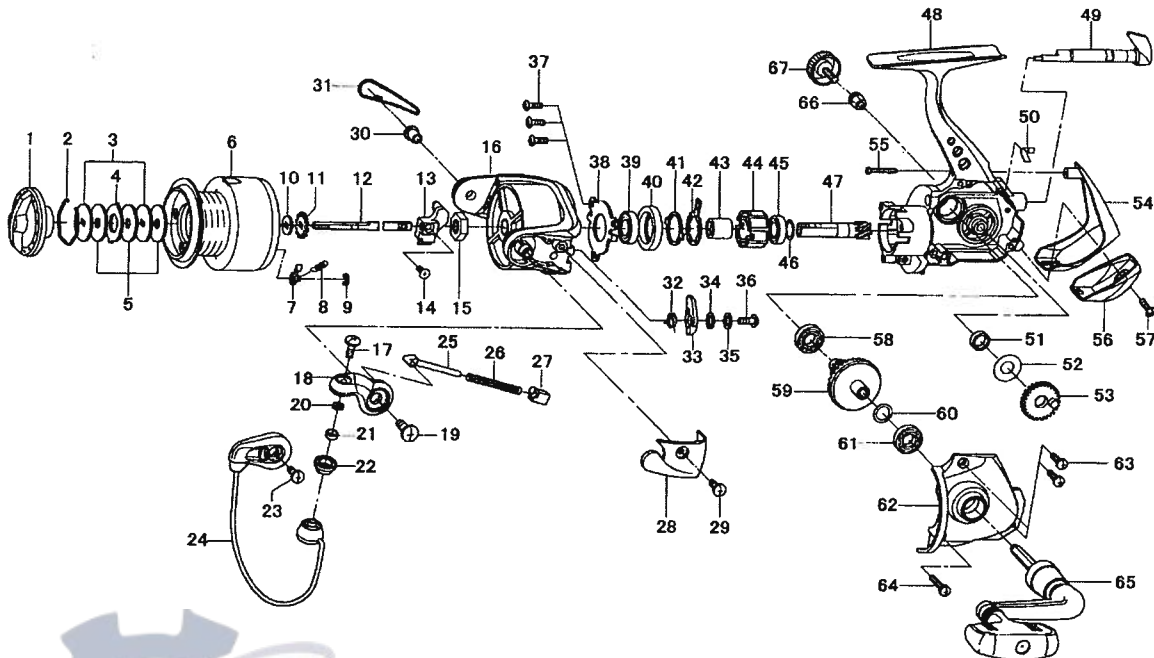


**LAGUNA 3500 / 4000**



| Key No. | Parts No. | Parts Name               |
|---------|-----------|--------------------------|
| 1       | G35-4801  | DRAG KNOB                |
| 2       | F37-3301  | DRAG WASHER RET          |
| 3       | F09-4901  | KEY WASHER               |
| 4       | 373-3603  | EARED WASHER             |
| 5       | E13-6001  | DRAG WASHER              |
| 2-9     | G35-4601  | SPOOL                    |
| 2-9     | G38-4201  | SPOOL (EXTRA)            |
| 7       | B07-5304  | CLICK PAWL               |
| 8       | E40-3101  | CLICK SPRING             |
| 9       | 320-5901  | CLICK RET                |
| 10      | F09-4701  | SPOOL WASHER             |
| 11      | E46-2701  | CLICK GEAR               |
| 12      | G02-5701  | MAIN SHAFT               |
| 13      | G02-5501  | OSC SLIDER               |
| 14      | 352-1505  | OSC SLIDER SCREW         |
| 15      | G12-3301  | ROTOR NUT                |
| 16      | G23-0204  | ROTOR                    |
| 17      | G01-8601  | LINE ROLLER SCREW        |
| 18      | G19-4501  | BAIL ARM                 |
| 19      | G22-4901  | BAIL ARM SCREW           |
| 20      | F89-7101  | LINE ROLLER WASHER       |
| 21      | G28-5701  | BALL BEARING A           |
| 22      | F62-5001  | LINE ROLLER              |
| 23      | 351-6101  | BAIL HOLDER SCREW        |
| 24      | G35-4101  | BAIL                     |
| 25      | G01-7502  | BAIL SPRING SHAFT        |
| 26      | G14-8601  | BAIL SPRING              |
| 27      | G01-7401  | BAIL SPRING HOLDER       |
| 28      | G23-0302  | BAIL SPRING COVER        |
| 29      | G20-5101  | BAIL SPRING COVER SCREW  |
| 30      | G19-5101  | BAIL HOLDER NUT          |
| 31      | G35-4301  | BAIL HOLDER COVER        |
| 32      | G19-4101  | BAIL TRIP LEVER SPRING   |
| 33      | G26-5501  | BAIL TRIP LEVER          |
| 34      | 375-3002  | BAIL TRIP LEVER WASHER A |
| 35      | 375-3003  | BAIL TRIP LEVER WASHER B |
| 36      | G19-3701  | BAIL TRIP LEVER SCREW    |

| Key No. | Parts No. | Parts Name          |
|---------|-----------|---------------------|
| 37      | G33-2701  | BEARING RET SCREW   |
| 38      | G35-3701  | BEARING RET         |
| 39      | G35-3401  | BALL BEARING B      |
| 40      | G35-3601  | BALL BEARING COLLAR |
| 41      | F64-1501  | CLUTCH CAM RET      |
| 42      | F64-1401  | CLUTCH CAM          |
| 43      | G35-3501  | SPACING SLEEVE      |
| 44      | G31-4501  | ROLLER CLUTCH       |
| 45      | G35-3401  | BALL BEARING C      |
| 46      | 373-7814  | PINION WASHER       |
| 47      | G02-5301  | PINION GEAR         |
| 48      | G35-3301  | BODY                |
| 49      | G19-3103  | A/R LEVER           |
| 50      | G19-3301  | A/R CAM SPRING      |
| 51      | F13-1601  | OSC GEAR COLLAR     |
| 52      | G13-1700  | OSC GEAR WASHER     |
| 53      | F74-7801  | OSC GEAR            |
| 54      | G35-3901  | REAR COVER A        |
| 55      | G34-3701  | REAR COVER SCREW A  |
| 56      | G35-4001  | REAR COVER B        |
| 57      | G33-2701  | REAR COVER SCREW B  |
| 58      | 631-6901  | BALL BEARING D      |
| 59      | G02-5601  | DRIVE GEAR          |
| 60      | 373-7808  | DRIVE GEAR WASHER   |
| 61      | 631-6901  | BALL BEARING E      |
| 62      | G35-3801  | SIDE COVER          |
| 63      | G33-2902  | SIDE COVER SCREW A  |
| 64      | G33-3002  | SIDE COVER SCREW B  |
| 65      | G35-4401  | HANDLE              |
| 66      | F72-1201  | HANDLE COLLAR       |
| 67      | F67-6509  | HANDLE SCREW        |

**SPECIAL PART FOR LA4000**

| Key No. | Parts No. | Parts Name    |
|---------|-----------|---------------|
| 2-9     | G35-5801  | SPOOL         |
| 2-9     | G38-4501  | SPOOL (EXTRA) |