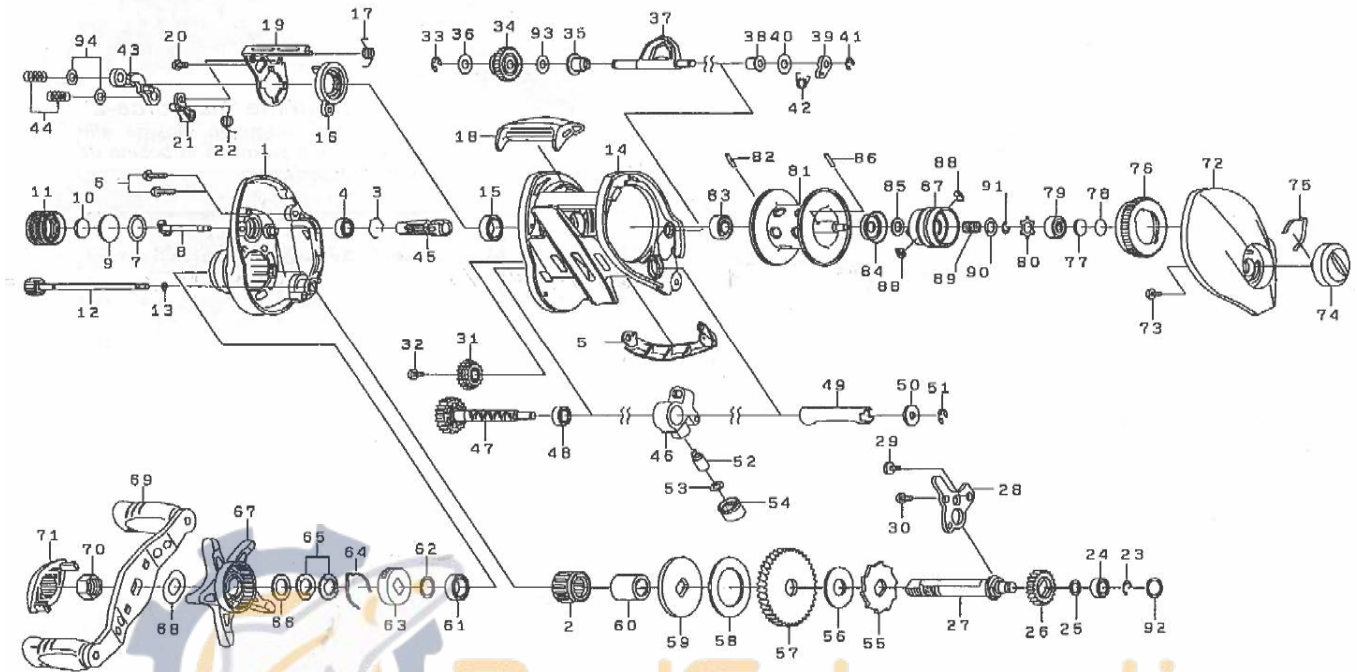


Please order by parts number, not key number  
 Veuillez indiquer le numéro de la pièce (Non "Key" No.)



BAITCASTING REEL

**MEGAFORCE 100THSL**



Key No.	Parts No.	Parts Name	Key No.	Parts No.	Parts Name
1	G97-4205	Left side plate	43	G97-5201	Yoke
2	G93-0501	Roller clutch	44	G85-0301	Yoke spring
3	B42-1601	Bearing retainer (A)	45	H63-6901	Pinion gear
4	B35-8607	Ball bearing (A)	46	G93-3701	Line guide
5	G97-5503	Front plate	47	G93-9901	Worm shaft assembly
6	F93-9701	Left side plate screw (A)	48	G05-1701	Bearing
7	B05-5201	"O" ring (A)	49	G93-4201	Level wind guard
8	G93-1001	Pinion shaft	50	F65-5501	Worm shaft washer
9	375-7501	Spool adjusting cap metal	51	320-5901	Worm shaft retainer
10	B17-5503	Spacer (A)	52	F51-6501	Line guide pawl
11	H21-3601	Cast control cap	53	373-1300	Line guide washer
12	G93-1101	Left side plate screw (B)	54	F40-2801	Pawl cap
13	B85-3101	"O" ring (B)	55	G93-4301	Clutch wheel
14	G97-4305	Frame assembly	56	G93-4401	Drive shaft washer
15	B86-1704	Ball bearing (B)	57	H35-0302	Drive gear (B)
16	G97-4401	Clutch cam (A)	58	G93-4601	Drag washer
17	G97-4501	Clutch cam spring (A)	59	G93-4701	Key washer
18	G93-1801	Clutch lever	60	G93-4801	Gear shaft collar
19	G97-4601	Clutch cam (B)	61	B86-1704	Ball bearing (B)
20	G19-3701	Clutch cam screw	62	B55-3801	Bearing washer
21	G97-4701	Clutch trip lever	63	F02-8203	Click leaf spring holder
22	G97-4801	Clutch cam spring (B)	64	F03-2401	Click leaf spring
23	320-8002	Retainer (A)	65	150-8901	Drag spring washer
24	B35-8607	Ball bearing (A)	66	373-7810	Spacing sleeve
25	E09-6501	Washer (A)	67	H63-0202	Star drag
26	G93-2201	Drive gear (A)	68	150-9001	Friction washer
27	H61-5602	Drive shaft	69	H63-0301	Handle assembly
28	G93-2401	Drive shaft retainer	70	F84-9904	Handle nut
29	G19-3701	Drive shaft retainer screw (A)	71	G96-9901	Handle nut plate
30	G17-1402	Drive shaft retainer screw (B)	72	H63-0901	Right side plate
31	G93-2501	Idle gear	73	F21-2201	Set plate screw
32	G19-3701	Idle gear screw	74	G93-6218	Brake adjusting knob
33	320-1402	Retainer (B)	75	H08-4401	Brake click spring
34	H63-0701	Gear assembly	76	H02-9701	Magnet holder
35	G93-2801	Bushing (A)	77	375-7411	Spacer (B)
36	G82-3801	Washer (B)	78	375-7404	Spacer (C)
37	G97-5006	Lever	79	G51-1504	Ball bearing (C)
38	G93-3101	Bushing (B)	80	H18-0501	Bearing retainer (B)
39	G93-3202	Plate	81-91	Z01-8872	Spool assembly
40	G53-9402	Washer (C)	92	H30-6600	Washer (D)
41	B33-9801	Retainer (C)	93	H58-3301	Washer (E)
42	G97-5101	Lever spring	94	B41-1706	Yoke washer