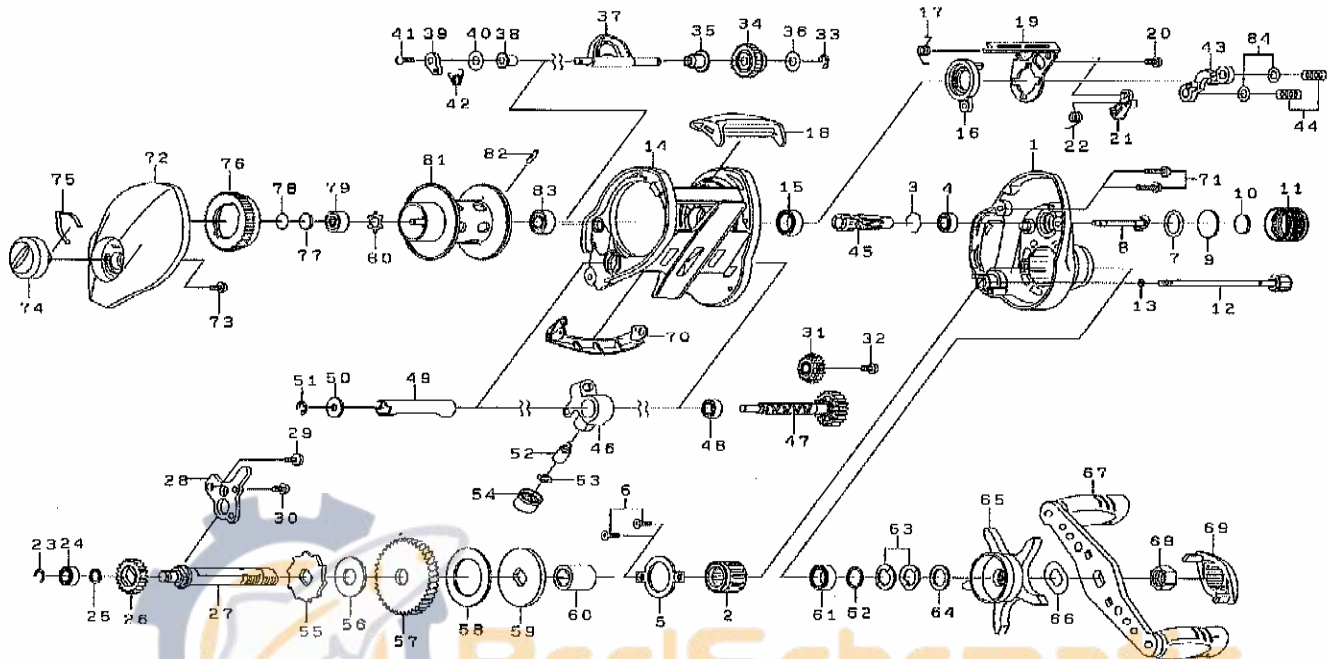


Please order by parts number, not key number  
Veuillez indiquer le numéro de la pièce.



# MEGAFORCE 100TSH



## MEGAFORCE 100TSH

Key No.	Parts No.	Parts Name	Key No.	Parts No.	Parts Name
1	G93-0301	Right side plate	42	G93-3401	Lever spring
2	G93-0501	Roller clutch	43	G93-3501	Yoke
3	B42-1601	Bearing retainer (A)	44	G85-0301	Yoke spring
4	B35-8607	Ball bearing (A)	45	G93-3601	Pinion gear
5	G93-0901	Handle metal plate	46	G93-3701	Line guide
6	G27-0701	Handle metal plate screw	47	G93-9901	Worm shaft assembly
7	B05-5201	"0" ring (A)	48	G05-1701	Bearing
8	G93-1001	Pinion shaft	49	G93-4201	Level wind guard
9	375-7501	Spool adjusting cap metal	50	F65-5501	Worm shaft washer
10	B17-5503	Spacer (A)	51	320-5901	Worm shaft retainer
11	G96-9801	Cast control cap	52	F51-6501	Line guide pawl
12	G93-1101	Right side plate screw (A)	53	373-1300	Line guide washer
13	B85-3101	"0" ring (B)	54	F40-2801	Pawl cap
14	G93-1401	Frame assembly	55	G93-4301	Clutch wheel
15	B86-1704	Ball bearing (B)	56	G93-4401	Drive shaft washer
16	G93-1601	Clutch cam (A)	57	G93-4501	Drive gear (B)
17	G93-1701	Clutch cam spring (A)	58	G93-4601	Drag washer
18	G93-1801	Clutch lever	59	G93-4701	Key washer
19	G93-1901	Clutch cam (B)	60	G93-4801	Gear shaft collar
20	G19-3701	Clutch cam screw	61	B86-1704	Ball bearing (B)
21	G93-2001	Clutch trip lever	62	B55-3801	Bearing washer
22	G93-2101	Clutch cam spring (B)	63	150-8901	Drag spring washer
23	320-8002	Retainer (A)	64	373-7810	Spacing sleeve
24	G05-1701	Bearing	65	G93-4901	Star drag
25	E09-6501	Washer (A)	66	150-9001	Friction washer
26	G93-2201	Drive gear (A)	67	G93-5301	Handle assembly
27	G93-2301	Drive shaft	68	F84-9903	Handle nut
28	G93-2401	Drive shaft retainer	69	G96-9901	Handle nut plate
29	G19-3701	Drive shaft retainer screw (A)	70	G93-5901	Front nut
30	G17-1402	Drive shaft retainer screw (B)	71	F93-9701	Right side plate screw (B)
31	G93-2501	Idle gear	72	G93-6001	Left side plate
32	G19-3701	Idle gear screw	73	F21-2201	Set plate screw
33	320-1402	Retainer (B)	74	G93-6201	Brake adjusting knob
34	G93-2601	Gear assembly	75	H08-4401	Brake click spring
35	G93-2801	Bushing (A)	76	H02-9701	Magnet holder
36	G82-3801	Washer (B)	77	375-7411	Spacer (B)
37	G93-2901	Lever	78	375-7404	Spacer (C)
38	G93-3101	Bushing (B)	79	G51-1504	Ball bearing (C)
39	G93-3201	Plate	80	G93-6301	Bearing retainer (B)
40	G53-9402	Washer (C)	81-83	G93-6401	Spool assembly
41	G01-6001	Lever screw	84	B41-1706	Yoke washer

