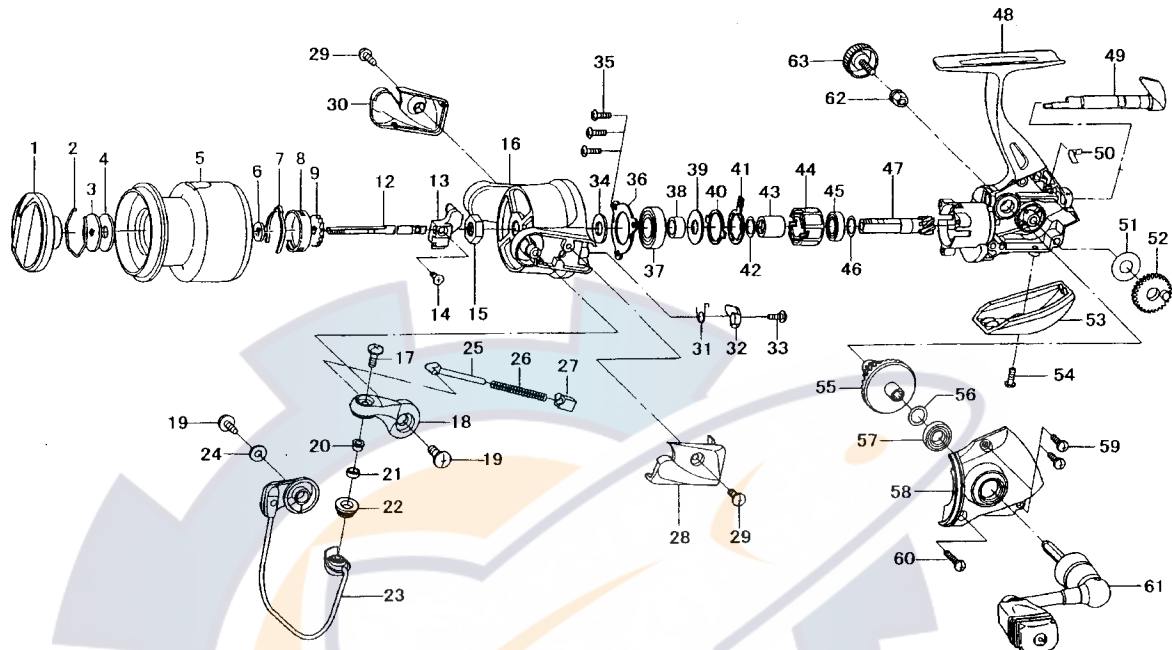


**Daiwa**  
COMMITTED TO TOTAL QUALITY  
SPINNING REEL

**ONDINE 1500 / 2000**



Key No.	Parts No.	Parts Name
1	G24-8101	DRAG KNOB
2	F37-3301	DRAG WASHER RET
3	E46-7201	KEY WASHER
4	E13-6001	DRAG WASHER
2-5	G24-7901	SPOOL
2-5	G13-1802	SPOOL (EXTRA)
6	E46-7101	SPOOL WASHER
7	F70-4901	SPOOL CLICK LEAF SPRING
8	E12-2308	CLICK LEAF SPRING HOLDER
9	F81-1501	CLICK GEAR
12	G29-1401	MAIN SHAFT
13	G06-1601	OSC SLIDER
14	351-0315	OSC SLIDER SCREW
15	F33-6102	ROTOR NUT
16	G06-2206	ROTOR
17	G01-8601	LINE ROLLER SCREW
18	G06-2501	BAIL ARM
19	G20-5001	BAIL ARM SCREW
20	G15-2501	LINE ROLLER COLLAR
21	G17-3801	LINE ROLLER WASHER
22	F62-5001	LINE ROLLER
23	G06-2702	BAIL
24	F40-1001	BAIL HOLDER WASHER
25	G01-7503	BAIL SPRING SHAFT
26	G06-2401	BAIL SPRING
27	G01-7401	BAIL SPRING HOLDER
28	G06-2604	BAIL SPRING COVER
29	G20-5101	BAIL SPRING COVER SCREW
30	G06-3004	BAIL HOLDER COVER
31	G01-7201	BAIL TRIP LEVER SPRING
32	G13-5402	BAIL TRIP LEVER
33	G19-3701	BAIL TRIP LEVER SCREW
34	373-5403	BEARING RET WASHER
35	351-5311	BEARING RET SCREW

Key No.	Parts No.	Parts Name
36	G19-3602	BEARING RET
37	G02-0801	BALL BEARING A
38	G19-3501	BALL BEARING COLLAR
39	B27-5403	BALL BEARING WASHER
40	F62-2301	CLUTCH CAM RET
41	F62-2201	CLUTCH CAM
42	375-8502	CLUTCH CAM WASHER
43	F73-2501	SPACING SLEEVE
44	G22-0601	ROLLER CLUTCH
45	634-1301	BALL BEARING B
46	375-8504	PINION GEAR WASHER
47	G06-1401	PINION GEAR
48	G24-7701	BODY
49	G19-3102	A/R LEVER
50	G19-3301	A/R CAM SPRING
51	G11-4300	OSC GEAR COLLAR
52	F69-1702	OSC GEAR
53	G20-6101	REAR COVER
54	F50-5701	REAR COVER SCREW
55	G06-1701	DRIVE GEAR
56	375-8500	DRIVE GEAR WASHER
57	634-1301	BALL BEARING C
58	G20-6004	SIDE COVER
59	351-1106	SIDE COVER SCREW A
60	G25-9101	SIDE COVER SCREW B
61	G24-7101	HANDLE
62	F72-1001	HANDLE COLLAR
63	F67-6503	HANDLE SCREW

**ON2000 SPECIAL PARTS**

Key No.	Parts No.	Parts Name
2-5	G24-8201	SPOOL
2-5	G13-2302	SPOOL (EXTRA)