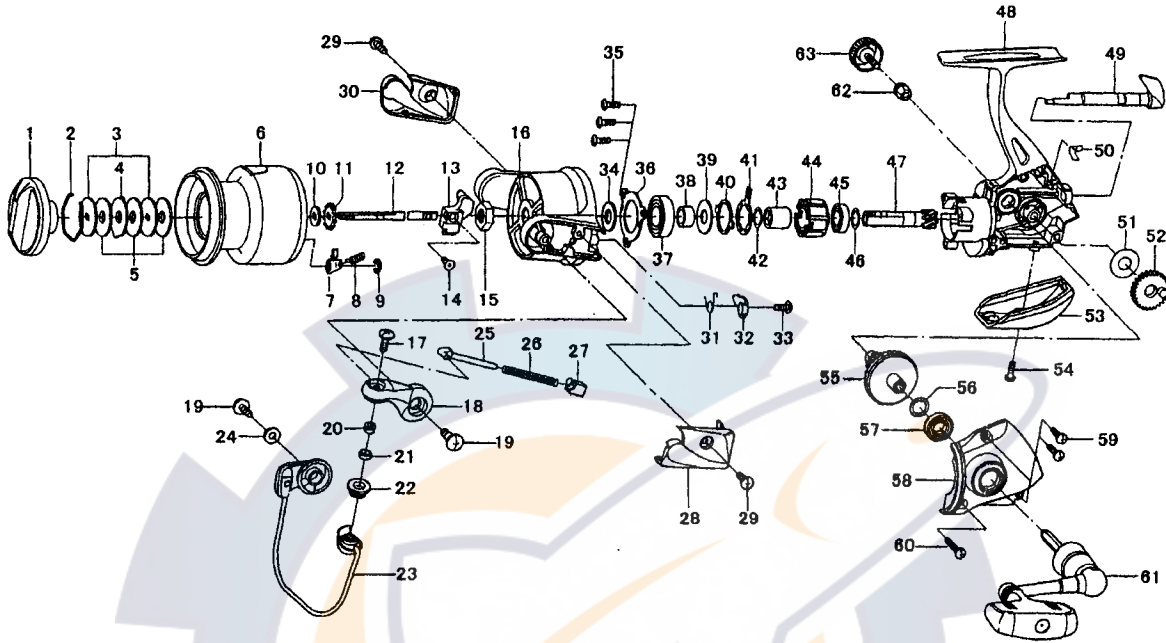


Daiwa
COMMITTED TO TOTAL QUALITY
SPINNING REEL

ONDINE 2500



Key No.	Parts No.	Parts Name
1	F77-7610	DRAG KNOB
2	F37-3301	DRAG WASHER RET
3	E46-7201	KEY WASHER
4	373-3603	EARED WASHER
5	E13-6001	DRAG WASHER
2-9	G23-9201	SPOOL
2-9	G10-0202	SPOOL (EXTRA)
7	B07-5304	CLICK PAWL
8	E40-3101	CLICK SPRING
9	320-5901	CLICK RET
10	E46-7101	SPOOL WASHER
11	F81-1501	CLICK GEAR
12	G29-1501	MAIN SHAFT
13	G01-6501	OSC SLIDER
14	351-0315	OSC SLIDER SCREW
15	F33-6102	ROTOR NUT
16	G01-7105	ROTOR
17	G01-8601	LINE ROLLER SCREW
18	G01-7801	BAIL ARM
19	G20-5001	BAIL ARM SCREW
20	G15-2501	LINE ROLLER COLLAR
21	G17-3801	LINE ROLLER WASHER
22	F62-5001	LINE ROLLER
23	G01-8002	BAIL
24	F40-1001	BAIL HOLDER WASHER
25	G01-7504	BAIL SPRING SHAFT
26	G01-7701	BAIL SPRING
27	G01-7401	BAIL SPRING HOLDER
28	G01-7904	BAIL SPRING COVER
29	G20-5101	BAIL SPRING COVER SCREW
30	G01-8504	BAIL HOLDER COVER
31	G01-7201	BAIL TRIP LEVER SPRING

Key No.	Parts No.	Parts Name
32	G01-7301	BAIL TRIP LEVER
33	G19-3701	BAIL TRIP LEVER SCREW
34	373-5403	BEARING RET WASHER
35	352-2501	BEARING RET SCREW
36	G19-3601	BEARING RET
37	637-6101	BALL BEARING A
38	G19-3501	BALL BEARING COLLAR
39	B27-5403	BALL BEARING WASHER
40	F62-2301	CLUTCH CAM RET
41	F62-2201	CLUTCH CAM
42	375-8502	CLUTCH CAM WASHER
43	F73-2501	SPACING SLEEVE
44	G22-0601	ROLLER CLUTCH
45	634-1301	BALL BEARING B
46	375-8504	PINION GEAR WASHER
47	G29-1201	PINION GEAR
48	G23-9101	BODY
49	G19-3101	A/R LEVER
50	G19-3301	A/R CAM SPRING
51	F76-7700	OSC GEAR WASHER
52	F67-7401	OSC GEAR
53	G19-3901	REAR COVER
54	F50-5701	REAR COVER SCREW
55	G01-6601	DRIVE GEAR
56	375-8500	DRIVE GEAR WASHER
57	634-1301	BALL BEARING C
58	G19-3803	SIDE COVER
59	351-1106	SIDE COVER SCREW A
60	G25-9101	SIDE COVER SCREW B
61	G23-8501	HANDLE
62	F72-1001	HANDLE COLLAR
63	F67-6503	HANDLE SCREW