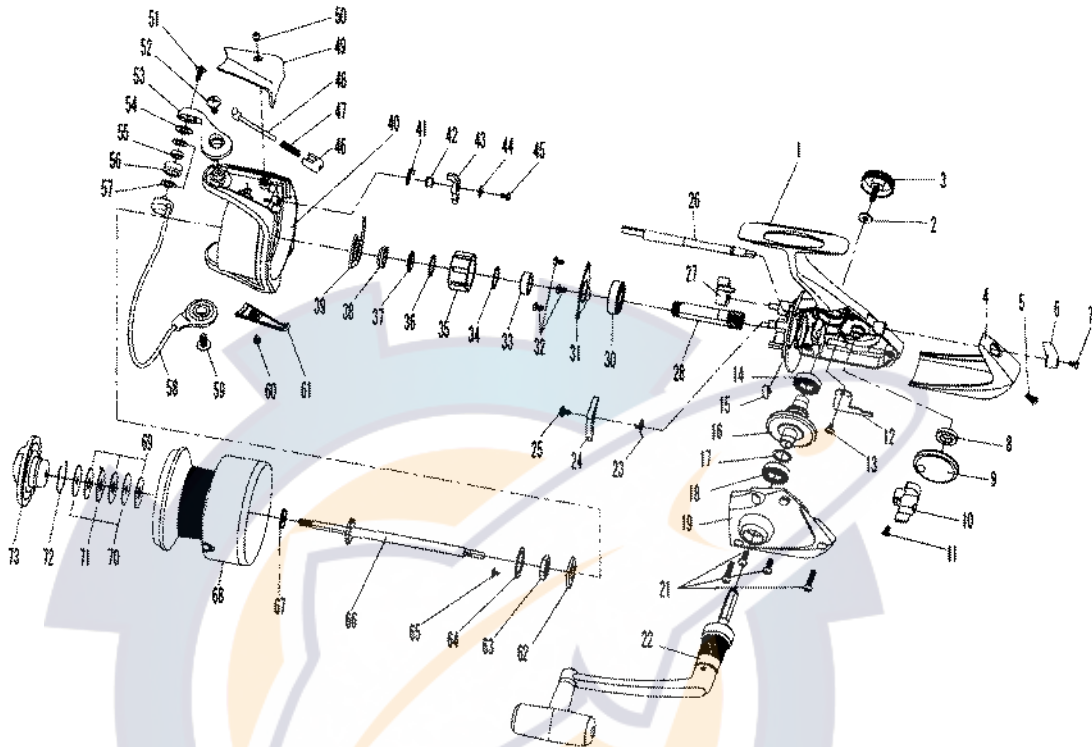


**Daiwa**  
COMMITTED TO TOTAL QUALITY  
SPINNING REEL

**OPUS 5500/6000**



Key No.	Parts No.	Parts Name	Key No.	Parts No.	Parts Name
1	W39-0052	BODY	41	W31-1701	BAIL TRIP LEVER SPRING
2	W30-6401	HANDLE WASHER	42	W39-2801	BAIL TRIP LEVER COLLAR
3	W39-0101	HANDLE SCREW	43	W39-2902	BAIL TRIP LEVER
4	W39-0252	REAR COVER	44	W31-1801	BAIL TRIP LEVER WASHER
5	W39-0301	REAR COVER SCREW	45	W39-3001	BAIL TRIP LEVER SCREW
6	W36-0301	A/R LEVER	46	W39-3101	BAIL SPRING HOLDER
7	W36-0401	A/R LEVER SCREW	47	W39-3202	BAIL SPRING
8	W30-5601	OSC GEAR COLLAR	48	W39-3302	BAIL SPRING SHAFT
9	W30-5501	OSC GEAR	49	W39-3452	BAIL SPRING COVER
10	W30-5201	OSC SLIDER	50	W36-7401	BAIL SPRING COVER SCREW
11	W30-5101	OSC SLIDER SCREW	51	W36-7601	LINE ROLLER SCREW
12	W30-5001	OSC SLIDER HOLDING PLT	52	W36-7501	BAIL ARM SCREW
13	W39-0601	OSC SLIDER HOLD PLT SCREW	53	W39-3502	BAIL ARM
14	W30-3701	DRIVE GEAR BUSHING	54	W30-6201	LINE ROLLER WASHER B
15	W39-0702	A/R CAM SPRING	55	W36-8051	LINE ROLLER COLLAR
16	W30-3301	DRIVE GEAR	56	W36-8101	LINE ROLLER
17	W30-4301	DRIVE GEAR WASHER	57	W30-6101	LINE ROLLER WASHER A
18	W30-4101	SIDE COVER BUSHING	58	W39-3652	BAIL
19	W39-0852	SIDE COVER	59	W36-7501	BAIL HOLDER SCREW
21	W39-1001	SIDE COVER SCREW	60	W36-7401	BAIL HOLDER COVER SCREW
22	W39-1152	HANDLE	61	W39-3752	BAIL HOLDER COVER
23	W39-1201	A/R PAWL SPRING A	62	W30-8201	ROTOR NUT HOLD PLT
24	W39-1301	A/R PAWL A	63	W30-8701	ROTOR NUT
25	W39-1401	A/R PAWL A SCREW	64	W30-6501	ROTOR NUT WASHER
26	W39-1551	A/R CAM	65	W36-8901	ROTOR NUT HOLD PLT SCREW
27	W39-1601	A/R PAWL B	66	W39-3851	MAIN SHAFT
28	W39-1751	PINION GEAR	67	W39-3901	CLICK GEAR
30	W30-1501	BALL BEARING	68-72	W39-4053	SPOOL
31	W39-1902	BEARING RET	69	W36-9601	DRAG WASHER
32	W30-9501	BEARING RET SCREW	70	W36-9701	KEY WASHER
33	W39-2001	SPACING SLEEVE	71	W36-9801	EARED WASHER
34	W39-2101	BALL BEARING WASHER	72	W36-9901	DRAG WASHER RET
35	W39-2201	ROLLER CLUTCH	73	W36-9501	DRAG KNOB
36	W39-2301	ROLLER CLUTCH WASHER			
37	W39-2401	COLLAR A			
38	W39-2501	COLLAR B			
39	W39-2602	A/R PAWL SPRING B			
40	W39-2752	ROTOR			

**SPECIAL PART FOR OP6000**

Key No.	Parts No.	Parts Name
68-72	W39-4054	SPOOL