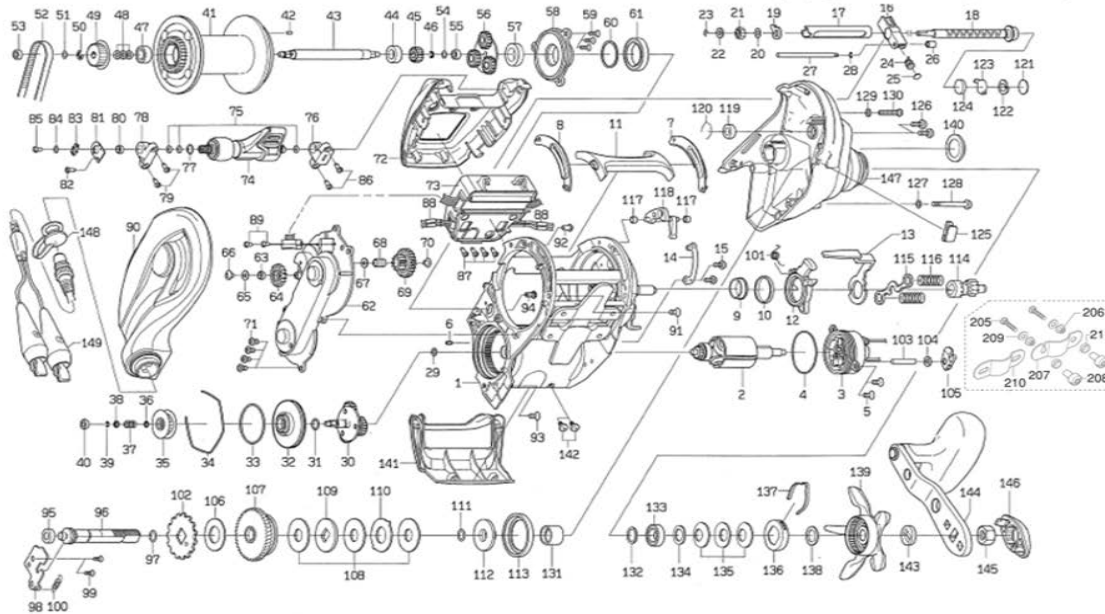


# ELECTRONIC REEL

# TANACOM500

\*Please order by parts number, not key number.



**Key No. Part No Description**

1	J80-8601	FRAME
2	202-1722	MOTOR
3	202-1720	MOTOR HOLDER
4	F27-4501	MOTOR HOLDER O RING
5	B55-7601	MOTOR HOLDER SCREW
6	G64-3501	MOTOR HOLDER PIN
7	J05-0902	CLUTCH LEVER PLATE(R)
8	J05-1102	CLUTCH LEVER PLATE(L)
9	G73-3701	CLUTCH CAM BEARING
10	G20-2701	CLUTCH CAM BEARING COLLAR
11	J03-6202	CLUTCH LEVER
12	G73-3901	CLUTCH CAM
13	J05-1301	CLUTCH CAM PLATE
14	J06-7501	CLUTCH CAM HOLD PLATE
15	B55-7601	CLUTCH CAM HOLD PLATE SCREW
16	J04-9701	LEVEL WIND
17	J05-0001	WORM SHIELD
18	J05-0101	WORM SHAFT
19	F85-9101	WORM SHAFT COLLAR
20	F57-1903	WORM SHAFT WASHER(A)
21	J05-1401	WORM SHAFT GEAR
22	F88-9103	WORM SHAFT WASHER(B)
23	B86-4101	WORM SHAFT RETAINER
24	F85-9401	PAWL
25	G09-9801	PAWL WASHER(0.1)
26	H72-4201	LEVEL WIND POST COLLAR
27	J05-1501	LEVEL WIND POST
28	B86-4101	LEVEL WIND POST RETAINER
29	H35-2903	MOTOR GEAR(A) WASHER
30	J23-8901	MOTOR GEAR(A)
31	F65-7801	MOTOR GEAR(A) O RING
32	J40-7901	MOTOR CASE PLATE(A)
33	F27-4501	MOTOR CASE PLATE(A) O RING
34	F46-6601	MOTOR CASE RING
35	J05-1901	MOTOR GEAR(B)
36	B41-1703	MOTOR GEAR(B) WASHER(0.1)
37	G86-4801	MOTOR GEAR(B) SPRING WASHER
38	J36-6701	MOTOR GEAR(B) BEARING WASHER
39	320-5901	MOTOR GEAR(B) RETAINER
40	G07-7201	MOTOR GEAR(B) BEARING
41	J05-2101	SPOOL
42	G64-3501	SPOOL PIN
43	J05-2401	SPOOL SHAFT
44	E10-3802	SPOOL SHAFT BEARING
45	J05-2701	SPOOL SHAFT GEAR(A)
46	B33-9801	SPOOL SHAFT GEAR(A) RETAINER
47	E18-1602	SPOOL SHAFT BALL BEARING(A)
48	H35-1001	SPOOL SHAFT GEAR(B) SPRING WASHER
49	J05-3001	SPOOL SHAFT GEAR(B)
50	320-5901	SPOOL SHAFT GEAR(B) RETAINER
51	375-4101	SPOOL SHAFT WASHER(0.1)
52	J03-7501	MOTOR GEAR BELT

**Key No. Part No Description**

53	G28-1605	SPOOL SHAFT BALL BEARING(B)
54	375-4101	SPOOL GEAR WASHER(0.1)
55	G28-1607	SPOOL GEAR BALL BEARING
56	J05-3201	SPOOL GEAR
57	G00-7401	SPOOL PLATE BEARING
58	J05-3901	SPOOL PLATE
59	B39-5903	SPOOL PLATE SCREW
60	F68-2605	SPOOL PLATE WASHER(0.1)
61	F38-9102	SPOOL PLATE BALL BEARING(B)
62	J03-8001	SET PLATE
63	F54-2601	IDLE GEAR (A) COLLAR
64	J05-4301	IDLE GEAR (A)
65	B55-4301	IDLE GEAR (A) WASHER
66	353-8301	IDLE GEAR (A) SCREW
67	B41-1701	IDLE GEAR (B) WASHER
68	J10-8301	IDLE GEAR (B) COLLAR
69	J05-4401	IDLE GEAR (B)
70	353-8301	IDLE GEAR (B) SCREW
71	B55-7606	SET PLATE SCREW(A)
72	J80-9201	IC MODULE COVER
73	J03-6601	IC MODULE
74	J80-9001	POWER LEVER
75	J03-7201	POWER LEVER O RING
76	J03-7201	POWER LEVER HOLDER(R)
77	H12-9204	POWER LEVER WASHER
78	J03-7301	POWER LEVER HOLDER(L)
79	E00-4301	POWER LEVER HOLDER SCREW
80	B86-1301	POWER LEVER HOLDER COLLAR
81	J05-5501	POWER LEVER PLATE
82	E00-4301	POWER LEVER PLATE SCREW(A)
83	J03-5801	POWER LEVER PLATE CLICK SPRING
84	F89-7102	POWER LEVER PLATE WASHER
85	G29-9005	POWER LEVER PLATE SCREW(B)
86	E00-4301	POWER LEVER HOLDER SCREW
87	E00-4301	IC MODULE COVER SCREW
88	G07-9501	CODE COVER
89	H15-8201	SET PLATE SCREW(B)
90	J05-5708	US PLATE
91	E13-4509	FRAME SCREW(A)
92	G04-0824	US PLATE SCREW(A)
93	E13-4509	FRAME SCREW(B)
94	351-0905	US PLATE SCREW(B)
95	E35-1501	GEAR SHAFT COLLAR
96	J05-5801	GEAR SHAFT
97	F65-7801	GEAR SHAFT O RING
98	G75-1002	GEAR SHAFT PLATE
99	F21-1102	GEAR SHAFT PLATE SCREW
100	J18-1101	KICK LEVER SPRING
101	G52-6801	CLUTCH CAM SPRING
102	F82-6303	RATCHET
103	J19-7501	STOPPER PIN
104	F88-9105	STOPPER WASHER

**Key No. Part No Description**

105	F93-8801	STOPPER
106	H34-3401	DRIVE GEAR WASHER
107	J24-0301	DRIVE GEAR
108	G50-2403	DRAG WASHER
109	G35-8501	DRAG DISC WASHER
110	F79-6101	DRAG LIP WASHER
111	F65-7801	GEAR SHAFT O RING
112	H68-0001	DRAG DISC COLLAR
113	G69-7601	DRAG PACKING
114	J05-6301	PINION
115	G73-5201	CLUTCH PLATE
116	F30-4701	CLUTCH SPRING
117	G71-1001	CLUTCH CAM LEVER COLLAR
118	J05-6401	CLUTCH CAM LEVER
119	G00-6601	P/S BEARING
120	E21-9701	P/S BEARING RING
121	F67-3802	MECHANICAL BRAKE KNOB WASHER(A)
122	J19-7401	MECHANICAL BRAKE KNOB SPRING WASHER
123	J05-6901	MECHANICAL BRAKE KNOB WASHER(B)
124	G22-5103	MECHANICAL BRAKE KNOB WASHER(C)
125	E28-6001	LINE STOPPER
126	G75-2602	P/S PLATE SCREW (A)
127	B53-6101	P/S PLATE SCREW (B) WASHER
128	J16-4501	P/S PLATE SCREW (B)
129	B53-6101	P/S PLATE SCREW (C) WASHER
130	G75-2701	P/S PLATE SCREW (C)
131	G29-0901	DRAG COLLAR
132	F36-6804	HANDLE BEARING WASHER(A)
133	G52-3401	HANDLE BALL BEARING
134	373-7810	HANDLE BEARING WASHER(B)
135	E25-3501	DRAG SPRING WASHER
136	H69-1901	DRAG HOLDER
137	H93-3201	DRAG LEAF SPRING
138	H92-9501	STAR DRAG WASHER
139	H93-3509	STAR DRAG
140	F86-2807	MECHANICAL BRAKE COVER
141	J03-6407	FINGER COVER
142	H71-7101	FINGER COVER SCREW
143	F86-3202	HANDLE COLLAR
144	H99-1801	HANDLE
145	F84-9901	HANDLE NUT
146	H68-1004	HANDLE CAP
147	J80-9301	P/S PLATE
148	F66-1002	CONNECTOR CAP
149	G86-8701	CODE
205	F18-7601	CRAMP SHAFT SCREW
206	F18-7801	CRAMP SHAFT NUT
207	041-5601	CRAMP PLATE
208	F18-7701	CRAMP PLATE NUT
209	B93-7802	CRAMP WASHER
210	041-9901	CRAMP PLATE
211	G98-1701	CRAMP COLLAR