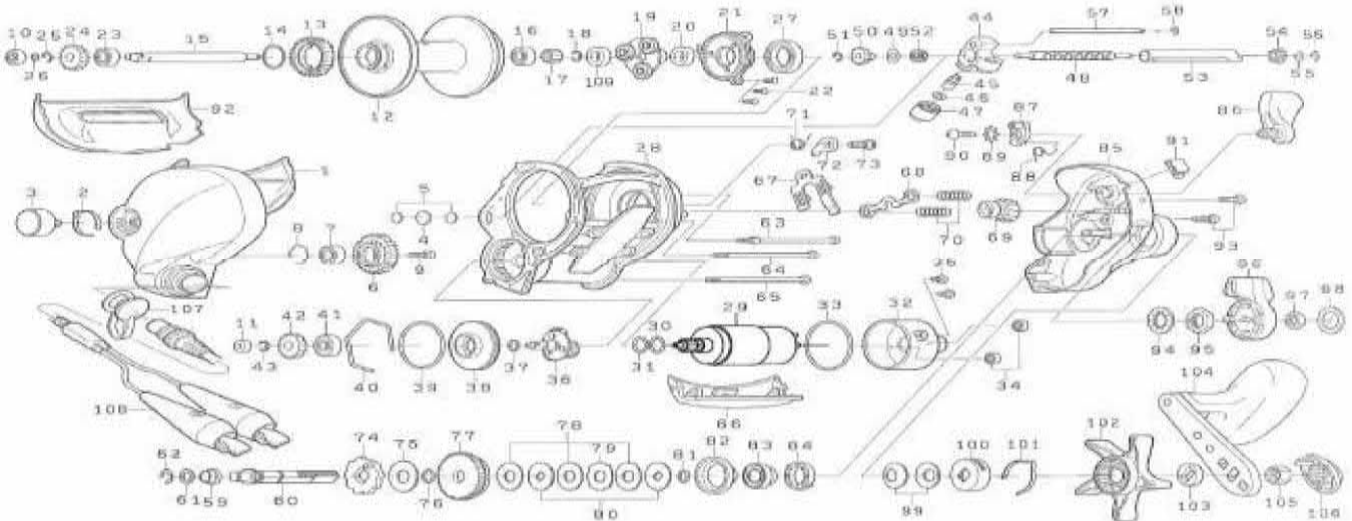


Please order by parts number, not key number
 Veuillez indiquer le numéro de la pièce (Non "Key" No.)



ELECTRONIC REEL **TANACOM BULL 500**



Key No.	Parts No.	Parts Name	Key No.	Parts No.	Parts Name
1	H57-6002	IC MODULE L/S PLATE SET	56	320-5901	WORM SHAFT GEAR RETAINER (R)
2	E03-3201	BRAKE CLICK SPRING	57	F46-7401	LEVELWIND POST
3	F46-2002	BRAKE ADJ KNOB	58	B86-4101	LEVELWIND POST RETAINER
4	B17-5503	MECHANICAL BRAKE WASHER (A)	59	F71-6101	DRIVE SHAFT BUSHING (A)
5	375-7405	MECHANICAL BRAKE WASHER (B)	60	F72-5501	DRIVE SHAFT
6	G07-0101	IDLE GEAR	61	F48-1201	DRIVE SHAFT COLLAR
7	G07-0301	IDLE GEAR BALL BEARING	62	320-7601	DRIVE SHAFT COLLAR RETAINER
8	G07-0201	IDLE GEAR RING	63	F54-1701	FRAME SCREW (A)
9	353-8207	IDLE GEAR SCREW	64	F46-7601	FRAME SCREW (B)
10	637-2102	SPOOL SHAFT BALL BEARING (A)	65	F46-7602	FRAME SCREW (C)
11	E28-0201	MOTOR GEAR(A) BUSHING	66	F46-7724	MOTOR COVER
12	H56-4202	SPOOL	67	F46-7801	YOKE PLATE
13	F65-6901	SPOOL GEAR	68	E25-2102	YOKE
14	F65-7001	SPOOL GEAR RING	69	G58-1201	PINION GEAR
15	H56-5801	SPOOL SHAFT	70	F93-5201	YOKE SPRING
16	B18-1602	SPOOL SHAFT BALL BEARING (B)	71	F67-3401	ANTI-REVERSE PAWL SPRING
17	H56-4401	SPOOL SHAFT GEAR (A)	72	F46-8101	ANTI-REVERSE PAWL
18	F55-0501	SPOOL SHAFT GEAR (A) RETAINER	73	F65-8701	ANTI-REVERSE PAWL SCREW
19	H56-4501	SPOOL SHAFT GEAR (B)	74	E29-0801	RATCHET
20	G00-7401	SPOOL SHAFT GEAR (B) BUSHING	75	374-6604	DRIVE SHAFT WASHER
21	G57-9901	SPOOL PLATE	76	F65-7801	DRAG O RING
22	B39-5503	SPOOL PLATE SCREW	77	G24-2801	DRIVE GEAR
23	B18-1602	SPOOL SHAFT BALL BEARING (C)	78	F65-9306	EARED WASHER
24	G08-7501	SPOOL SHAFT GEAR (C)	79	F65-9404	DRAG DISC WASHER
25	320-8702	SPOOL SHAFT GEAR (C) RETAINER	80	F65-9505	DRAG LIP WASHER
26	B41-1700	SPOOL SHAFT WASHER	81	F65-7801	DRAG O RING
27	E29-2701	SPOOL PLATE BALL BEARING	82	F65-9601	DRAG COLLAR SHIELD
28	H66-4801	FRAME	83	G13-9401	DRAG COLLAR
29	H56-5001	MOTOR	84	F86-0901	DRIVE SHAFT BUSHING (B)
30	B27-0708	MOTOR WASHER (A)	85	H66-4901	R/S PLATE
31	G07-3001	MOTOR WASHER (B)	86	F46-9006	CLUTCH LEVER
32	G24-2101	MOTOR HOLDER	87	F46-9201	CLUTCH CAM
33	F46-5901	MOTOR HOLDER O RING	88	G34-1101	CLUTCH CAM SPRING
34	G17-3401	CORD SHIELD	89	160-8001	CLUTCH LEVER WASHER
35	351-1801	MOTOR HOLDER SCREW	90	353-8212	CLUTCH LEVER SCREW
36	H56-5201	MOTOR GEAR (A)	91	E28-6001	LINE HOLDER
37	F65-7801	MOTOR GEAR (A) O RING	92	F46-9619	FINGER COVER
38	G24-2901	MOTOR CASE PLATE	93	G87-6302	R/S PLATE SCREW
39	F27-4501	MOTOR CASE O RING	94	F28-5901	POWER LEVER WASHER
40	F46-6601	MOTOR CASE RING	95	F30-3102	POWER LEVER NUT(A)
41	G24-1601	MOTOR CASE BALL BEARING	96	F42-9701	POWER LEVER
42	G24-2701	MOTOR GEAR (B)	97	342-4004	POWER LEVER NUT(B)
43	320-8702	MOTOR GEAR (B) RETAINER	98	F43-0002	POWER LEVER COVER
44	G58-0701	LEVELWIND	99	E25-3501	DRAG SPRING WASHER
45	122-0602	LEVELWIND PAWL	100	F86-2901	DRAG HOLDER
46	F95-0200	LEVELWIND WASHER	101	B74-7702	DRAG HOLDER LEAF SPRING
47	E35-4101	LEVELWIND NUT	102	F47-0209	STAR DRAG
48	G58-0801	WORM SHAFT	103	H63-6501	HANDLE COLLAR
49	371-6904	WORM SHAFT WASHER (L)	104	G66-8001	HANDLE
50	F65-8201	WORM SHAFT GEAR	105	B86-2102	HANDLE NUT
51	320-5901	WORM SHAFT GEAR RETAINER (L)	106	F47-1205	HANDLE CAP
52	F46-7201	WORM SHAFT BUSHING (L)	107	F66-1002	CONNECTOR CAP
53	F46-7301	WORM SHIELD	108	G86-8701	ELECTRIC POWER CORD
54	F46-7201	WORM SHAFT BUSHING (R)	109	G07-7201	SPOOL SHAFT BUSHING
55	B41-1702	WORM SHAFT WASHER (R)			