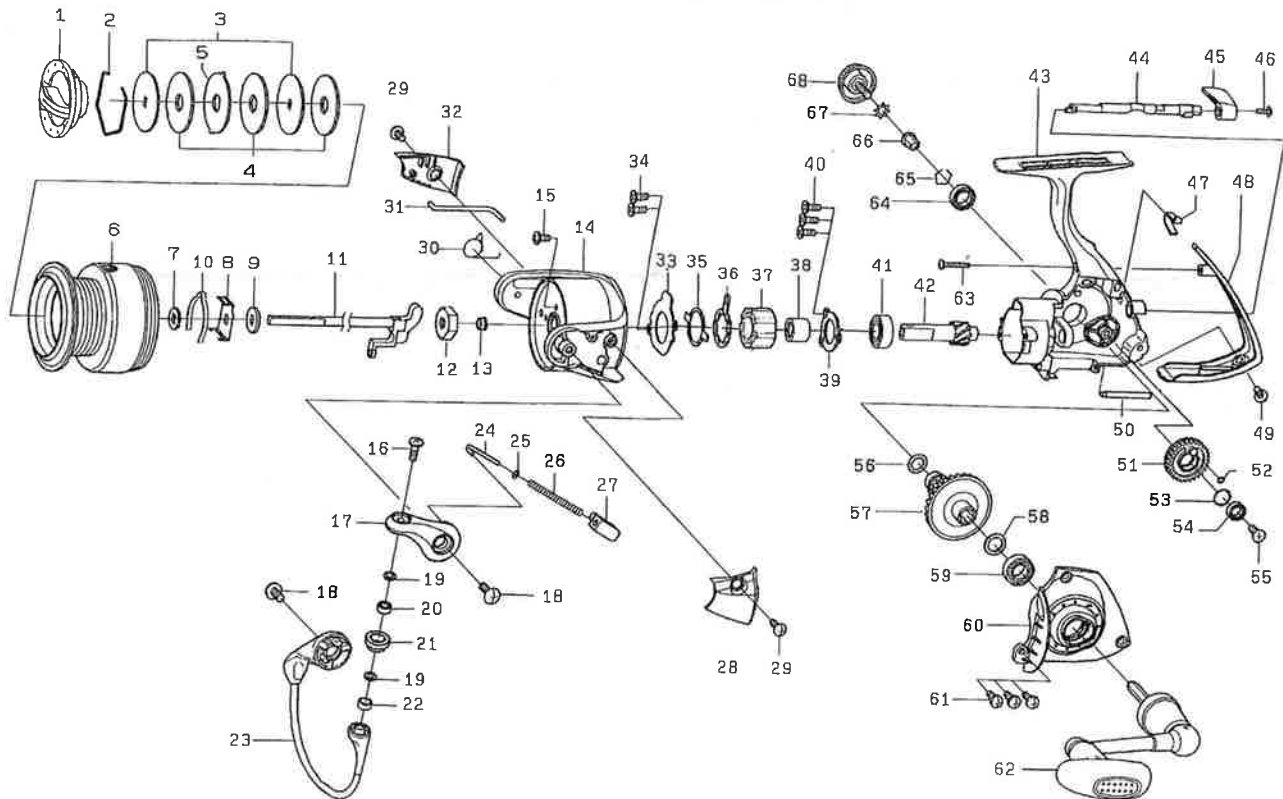


# D RED BACK 4000

Please order by parts number, not key number  
Veuillez indiquer le numéro de la pièce.



| Key No. | Parts No. | Parts Name               | Désignation des pièces                   | Key No. | Parts No. | Parts Name              | Désignation des pièces                        |
|---------|-----------|--------------------------|--|---------|-----------|-------------------------|---|
| 1       | 6G797301  | Drag Knob                | Bouton de réglage du frein               | 35      | 6F641501  | Clutch Cam Retainer     | Verrou de came d'embrayage                    |
| 2       | 6F884001  | Drag Washer Retainer     | Clips de rondelle de frein               | 36      | 6F641401  | Clutch Cam              | Came d'embrayage                              |
| 3       | 6G700601  | Key Washer               | Rondelle fixe                            | 37      | 6G314501  | Roller Clutch           | Roulement à aiguilles                         |
| 4       | 6F691001  | Drag Washer              | Rondelle de frein                        | 38      | 6G743001  | Spacing Sleeve          | Manchon                                       |
| 5       | 6G700701  | Eared Washer             | Rondelle à oreilles                      | 39      | 6G522901  | Bearing Retainer (A)    | Rondelle de retenue du roulement à billes (A) |
| 2-6     | 6H073601  | Spool Assembly           | Bobine complète                          | 40      | 6E134509  | Screw (F)               | Vis (F)                                       |
| 7       | 6E467101  | Washer (A)               | Rondelle (A)                             | 41      | 6G522801  | Ball Bearing (B)        | Roulement à billes (B)                        |
| 8       | 6G743901  | Click Leaf Spring Holder | Support de ressort de réglage du cliquet | 42      | 6G743101  | Pinion Gear             | Pignon  |
| 9       | 6E246101  | Washer (B)               | Rondelle (B)                             | 43      | 6H073301  | Body                    | Bâti  |
| 10      | 6F709002  | Spool Click Leaf Spring  | Ressort de réglage de bobine             | 44      | 6G742601  | Anti-Reverse Cam        | Came du cliquet anti-retour                   |
| 11      | 6G742701  | Main Shaft               | Axe principal                            | 45      | 6G699404  | Anti-Reverse Lever      | Commande de l'anti-retour                     |
| 12      | 6G743801  | Rotor Nut                | Ecrou de cloche                          | 46      | 6G699501  | Screw (G)               | Vis (G)                                       |
| 13      | 6G751201  | Collar (A)               | Collier (A)                              | 47      | 6G726201  | Anti-Reverse Cam Spring | Ressort de came du cliquet anti-retour        |
| 14      | 6G646112  | Rotor                    | Cloche                                   | 48      | 6G743501  | Rear Cover              | Couvercle arrière                             |
| 15      | 6G627701  | Screw (A)                | Vis (A)                                  | 49      | 6G332704  | Screw (H)               | Vis (H)                                       |
| 16      | 6G195602  | Screw (B)                | Vis (B)                                  | 50      | 6G644702  | Stabilizer Bar          | Entretoise                                    |
| 17      | 6G612309  | Bail Arm                 | Bras de pick-up                          | 51      | 6G644302  | Oscillating Gear        | Roue d'oscillation                            |
| 18      | 6G205001  | Screw (C)                | Vis (C)                                  | 52      | 6B853101  | "O" Ring (A)            | Anneau torique (A)                            |
| 19      | 6F897101  | Washer (C)               | Rondelle (C)                             | 53      | 6G522100  | Washer (E)              | Rondelle (E)                                  |
| 20      | 6G281601  | Ball Bearing (A)         | Roulement à billes (A)                   | 54      | 6G467102  | Ball Bearing (C)        | Roulement à billes (C)                        |
| 21      | 6F921601  | Line Roller              | Galet de pick-up                         | 55      | 6B703401  | Screw (I)               | Vis (I)                                       |
| 22      | 6G047601  | Collar (B)               | Collier (B)                              | 56      | 6G645301  | "O" Ring (B)            | Anneau torique (B)                            |
| 23      | 6G646401  | Bail Assembly            | Ensemble Arceau du pick-up               | 57      | 6G743201  | Drive Gear              | Roue de commande                              |
| 24      | 6G298201  | Bail Spring Shaft        | Axe de ressort de pick-up                | 58      | 63737800  | Washer (F)              | Rondelle (F)                                  |
| 25      | 6E313901  | Washer (D)               | Rondelle (D)                             | 59      | 6G523401  | Ball Bearing (D)        | Roulement à billes (D)                        |
| 26      | 6G646201  | Bail Spring              | Ressort de pick-up                       | 60      | 6H073401  | Side Cover              | Couvercle                                     |
| 27      | 6G612103  | Bail Spring Holder       | Support ressort de pick-up               | 61      | 6G332904  | Screw (J)               | Vis (J)                                       |
| 28      | 6G646301  | Cover (A)                | Couvercle (A)                            | 62      | 6H073501  | Handle Assembly         | Manivelle                                     |
| 29      | 6G270801  | Screw (D)                | Vis (D)                                  | 63      | 6E119602  | Screw (K)               | Vis (K)                                       |
| 30      | 6G613101  | Bail Trip Lever Spring   | Ressort du levier de déclenchement       | 64      | 6B861704  | Ball Bearing (E)        | Roulement à billes (E)                        |
| 31      | 6G646501  | Bail Trip Lever          | Levier de déclenchement                  | 65      | 6G525101  | Bearing Retainer (B)    | Rondelle de retenue du roulement à billes (B) |
| 32      | 6G646601  | Cover (B)                | Couvercle (B)                            | 66      | 6F721202  | Collar (C)              | Collier (C)                                   |
| 33      | 6G577401  | Roller Clutch Retainer   | Clips disque embrayage                   | 67      | 61608101  | Washer (G)              | Rondelle (G)                                  |
| 34      | 6G557101  | Screw (E)                | Vis (E)                                  | 68      | 6G744201  | Handle Screw            | Vis de Manivelle                              |