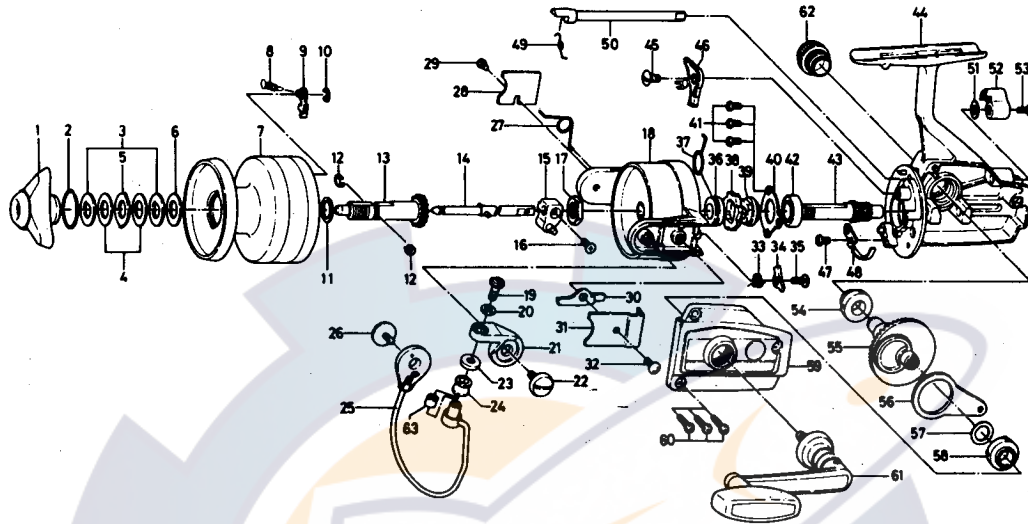


**SPINNING REEL REGAL D2600 & D2600SC**



**SPECIAL PARTS FOR D2600SC  
280-9602 RATCHET**

Key No.	Parts No.	Parts Name	Key No.	Parts No.	Parts Name
1	740-4401	Drag knob	32	351-7701	Bail kick lever cover screw
2	170-4601	Drag washer retainer	33	145-0701	Bail kick cam spring
3	376-4001	Drag D washer	34	571-0901	Bail kick cam
4	375-7802	Disc washer	35	351-4701	Bail kick cam screw
5	375-8002	Drag A washer	36	502-1301	Spring holder
6	375-7803	Drag washer A	37	145-2901	Anti-reverse claw spring
7	734-6304	Spool	38	280-9501	Ratchet
8	145-2101	Spool click claw spring	39	636-6711	Click gear
9	B07-8201	Spool click claw	40	635-9901	Ball bearing ret. washer
10	320-1402	Spool click claw retainer	41	635-4801	Ball bearing
11	376-3901	Spool washer	42	635-4801	Ball bearing
12	151-9501	Spool metal leaf spring	43	403-2801	Pinion gear
13	720-3101	Spool metal	44	B39-4801	Body
14	711-5501	Main shaft	45	352-1102	Anti-reverse claw screw
15	637-3001	Oscillating support	46	B33-5601	Anti-reverse claw
16	351-8901	Oscillating slider screw	47	351-6601	Cam kick plate screw
17	B10-5701	Rotor nut	48	B22-9901	Cam kick plate
18	202-1615	Rotor	49	144-0321	Anti-reverse cam spring
19	363-3111	Bail screw	50	B15-6403	Anti-reverse cam
20	375-1101	Bail washer	51	373-2700	Anti-reverse lever washer
21	231-3501	Arm lever	52	541-7301	Anti-reverse lever
22	363-5201	Arm lever screw	53	352-2501	Anti-reverse lever screw
23	501-2001	Roller collar	54	501-6101	Bearing metal
24	250-4501	Line roller	55	414-2302	Drive gear
25	725-8513	Bail	56	481-2401	Oscillating slider
26	363-5201	Bail holder screw	57	371-2800	Drive gear washer
27	145-2001	Bail spring	58	501-6101	Bearing metal
28	041-8801	Bail spring cover	59	B39-4901	Body cover
29	351-6101	Bail spring cover screw	60	351-5901	Body cover screw
30	571-1001	Bail kick lever	61	748-1001	Handle
31	041-8101	Bail kick lever cover	62	363-4701	Handle screw cap
			63	502-1401	Roller metal