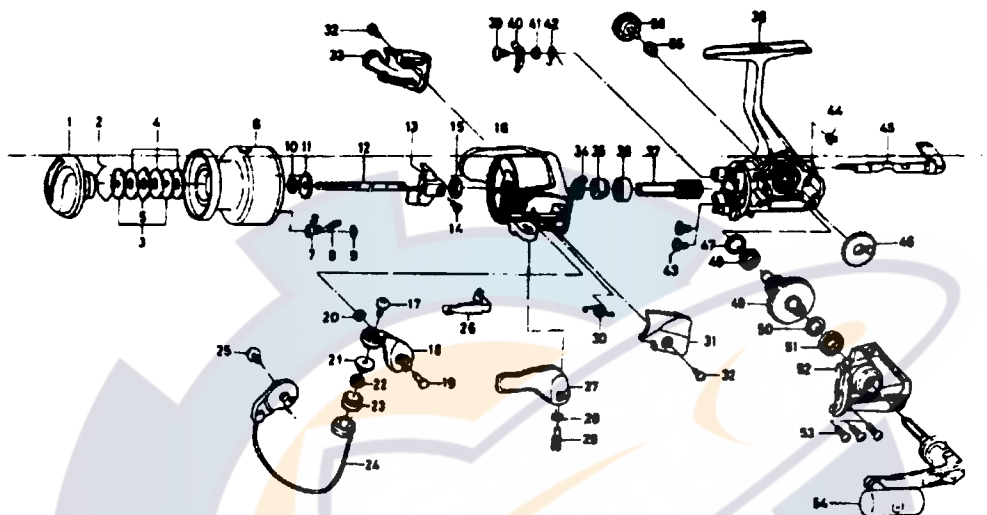




Please order by part number, not key number.

# SPINNING REEL REGAL RG-Z1505BL/RG-2005BL



Key No.	Parts No.	Parts Name	Key No.	Parts No.	Parts Name
2-9	F33-0603	Spool assembly (ALUMINUM SPOOL)	39	F12-5701	Anti-reverse pawl screw
1	F32-8503	Drag knob	40	F12-1901	Anti-reverse pawl
2	F37-3301	Drag washer retainer	41	F12-3501	Anti-reverse pawl collar
3	E46-7201	Key washer	42	F12-3401	Anti-reverse pawl spring B
4	E13-6001	Drag washer	43	E03-7801	Bearing retainer screw
5	373-3603	Eared washer	44	F12-2001	Anti-reverse cam spring
6	F33-0703	Spool assembly	45	F08-5123	Anti-reverse lever
7	B07-5304	Click pawl	46	F12-2201	Oscillating gear
8	E40-3101	Click spring	47	E50-5801	Bearing washer
9	320-5901	Click retainer	48	E30-6801	Ball bearing C
10	E46-7101	Spool washer	49	F12-1501	Drive gear
11	270-6501	Click gear	50	375-8501	Drive gear washer
12	E49-8401	Main shaft	51	634-1301	Ball bearing D
13	F12-2301	Oscillating slider	52	F33-1002	Side cover
14	351-0311	Oscillating slider screw	53	E15-8602	Side cover screw
15	341-9201	Rotor nut	54	F33-1201	Handle assembly
16	F33-1403	Rotor assembly	55	F40-4801	Handle collar
17	B67-9306	Line roller screen	56	B92-5006	Handle lock screw
18	F17-3103	Bail arm	2-9	F34-9601	Spool assembly (EXTRA SPOOL)
19	E49-3501	Bail arm screw	<b>RG-Z2005BL Special Parts</b>		
20	320-5901	Bail arm screw retainer	2-9	F33-2303	Spool assembly (ALUMINUM SPOOL)
21	F06-6301	Line roller screw	2-9	F40-5901	Spool assembly (EXTRA SPOOL)
22	F05-5601	Ball bearing A	16	F39-9803	Rotor assembly
23	F05-8901	Line roller	18	F17-3103	Bail arm
24	F33-1701	Bail assembly	24	F40-0201	Sail assembly
25	B84-2102	Bail trip cam screw	26	E49-6501	Bail trip lever
26	E49-6401	Bail trip lever	33	F32-6303	Bail trip cover
27	E49-3405	Trigger lever	38	F38-1304	Body assembly
28	E36-9901	Trigger spring	52	F33-1004	Side cover
29	E37-0002	Trigger screw			
30	E49-6801	Bail spring			
31	F32-4103	Bail spring cover			
32	E24-8101	Bail spring cover screw			
33	F32-6503	Bail trip cover			
34	F12-2101	Anti-reverse pawl spring A			
35	E49-8501	Anti-reverse ratchet			
36	634-1301	Ball bearing B			
37	F12-1601	Pinion gear			
38	F33-1302	Body assembly			