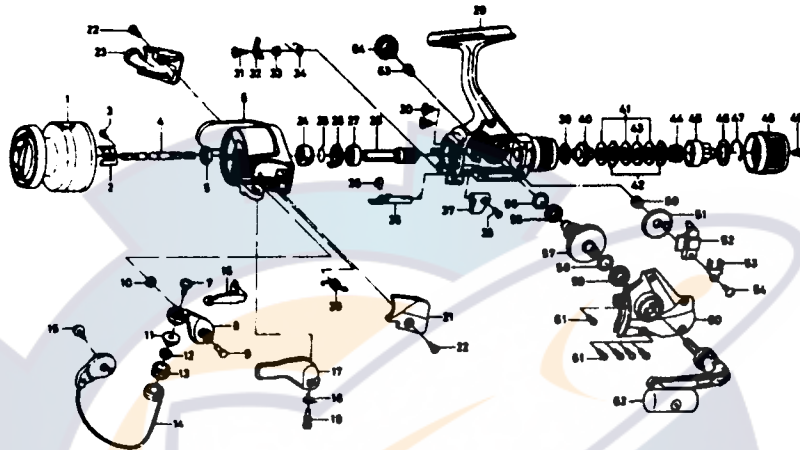




Please order by part number, not key number.

SPINNING REEL REGAL RG-Z2555BL



Key No.	Parts No.	Parts Name	Key No.	Parts No.	Parts Name
1	F33-7101	Spool assembly (Aluminum spool)	35	F19-5101	Anti-reverse cam
	F35-8501	Spool assembly (Extra spool)	36	F19-5201	Anti-reverse cam spring
2	F19-6702	Spool metal	37	F19-4903	Anti-reverse lever
3	351-1001	Spool metal screw	38	B64-6602	Anti-reverse lever screw
4	F19-5502	Main shaft	39	B48-9902	Drag washer A
5	341-9201	Rotor nut	40	B83-3604	Click gear
6	F32-1003	Rotor	41	L10-9601	Drag washer B
7	B67-9304	Line roller screw	42	L10-9701	Eared washer
8	F17-9803	Bail arm	43	L10-9801	Key washer
9	E49-3501	Bail arm screw	44	F06-2301	Drag coil spring
10	320-5901	Bail arm screw retainer	45	F19-5901	Drag collar
11	F06-6301	Line roller collar	46	L11-0001	Drag collar washer
12	F05-5601	Ball bearing A	47	L08-5601	Drag washer spring
13	F05-8901	Line roller	48	F33-7802	Drag knob
14	F32-7401	Gail assembly	49	E03-7802	Drag knob screw
15	B84-2102	Bail trip cam screw	50	E29-9401	Oscillating gear collar
16	E45-1601	Bail trip lever	51	E45-1302	Oscillating gear
17	F18-0003	Trigger lever	52	F19-5401	Oscillating slider
18	E36-9901	Trigger holder	53	F19-5601	Oscillating slider retainer
19	E37-0003	Trigger screw	54	350-8912	Oscillating slider screw
20	F12-8901	Bail spring	55	E50-5801	Bearing washer
21	F31-0503	Bail spring cover	56	E30-6801	Ball bearing C
22	E24-8101	Bail spring cover screw	57	F17-0001	Drive gear
23	F31-0603	Bail trip cover	58	373-7802	Drive gear washer
24	E49-2401	Anti-reverse ratchet	59	631-6901	Ball bearing D
25	F19-6301	Anti-reverse pawl spring A	60	F19-5711	Side cover
26	F19-6201	Spring holder	61	E15-8602	Side cover screw
27	L03-6601	Ball bearing B	62	F32-7002	Handle assembly
28	E51-9801	Pinion gear	63	501-8501	Handle collar
29	F19-4814	Body assembly	64	B92-5007	Handle lock screw
30	E03-7801	Bearing retainer screw			
31	L00-1801	Anti-reverse pawl screw			
32	F19-5301	Anti-reverse pawl			
33	L01-4302	Anti-reverse pawl collar			
34	L00-1501	Anti-reverse pawl spring B			