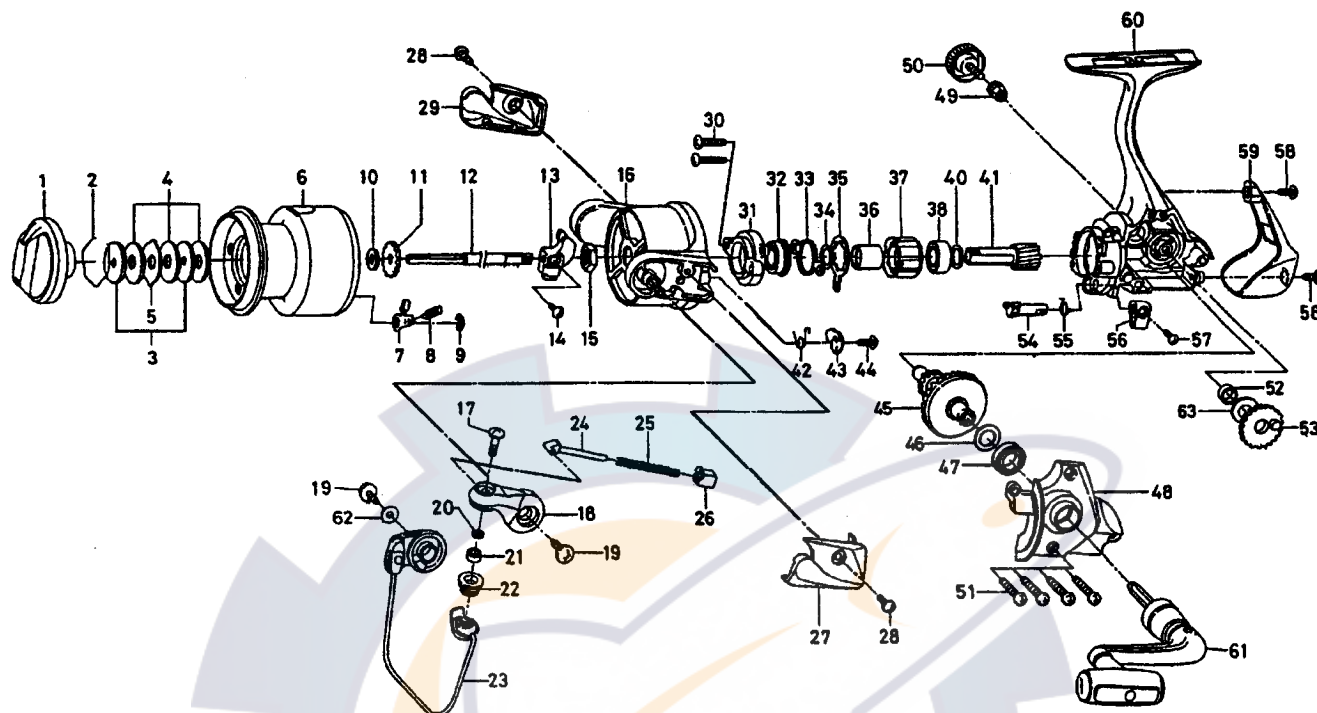




COMMITTED TO TOTAL QUALITY

SPINNING REEL

REGAL-Z3500C / 4000C



Key No.	Parts No.	Parts Name
2-9	G02-8701	SPOOL
2-9	G11-4601	EXTRA SPOOL
1	F75-0104	DRAG KNOB
2	F37-3301	DRAG WASHER RET
3	F09-4901	KEY WASHER
4	E13-6001	DRAG WASHER
5	373-3603	EARED WASHER
7	B07-5304	CLICK PAWL
8	E40-3101	CLICK SPRING
9	320-5901	CLICK RET
10	F09-4701	SPOOL WASHER
11	E46-2701	CLICK GEAR
12	G02-5701	MAIN SHAFT
13	G02-5501	OSC SLIDER
14	352-1505	OSC SLIDER SCREW
15	G12-3301	ROTOR NUT
16	G13-4601	ROTOR
17	G01-8601	LINE ROLLER SCREW
18	G01-7801	BAIL ARM
19	B84-2102	BAIL HOLDER SCREW
20	F89-7101	LINE ROLLER WASHER
21	F62-5102	BALL BEARING A
22	F62-5001	LINE ROLLER
23	G02-6501	BAIL
24	G01-7502	BAIL SPRING SHAFT
25	G14-8601	BAIL SPRING
26	G01-7401	BAIL SPRING HOLDER
27	G02-6401	BAIL SPRING COVER
28	E36-4202	BAIL HOLDER COVER SCREW
29	G02-6701	BAIL HOLDER COVER
30	G06-1501	BEARING RET SCREW
31	G02-5401	BEARING RET A
32	F25-2901	BALL BEARING B
33	F67-9701	ROLLER CLUTCH RET

Key No.	Parts No.	Parts Name
34	373-7814	BEARING RET WASHER
35	F64-1401	BEARING RET B
36	F73-2203	SPACING SLEEVE
37	F64-1201	ROLLER CLUTCH
38	F64-1101	BALL BEARING C
40	373-7814	PINION WASHER
41	G02-5301	PINION GEAR
42	G01-7201	BAIL TRIP LEVER SPRING
43	G02-7301	BAIL TRIP LEVER
44	G12-2401	BAIL TRIP LEVER SCREW
45	G02-5601	DRIVE GEAR
46	373-7808	DRIVE GEAR WASHER
47	631-6901	BALL BEARING D
48	G02-5801	SIDE COVER
49	F72-1201	HANDLE COLLAR
50	F67-6503	HANDLE SCREW
51	B83-5002	SIDE COVER SCREW
52	F13-1601	OSC GEAR COLLAR
53	F74-7801	OSC GEAR
54	G02-2301	A/R CAM
55	G01-6101	A/R CAM SPRING
56	G01-5801	A/R LEVER
57	G01-6001	A/R LEVER SCREW
58	E24-8103	REAR COVER SCREW
59	G02-5901	REAR COVER
60	G02-2101	BODY
61	G02-8201	HANDLE
62	F40-1001	BAIL HOLDER WASHER
63	G13-1700	OSC GEAR WASHER

RG-Z4000C Special Parts

Key No.	Parts No.	Parts Name
2-9	G02-7001	SPOOL
2-9	G10-2201	EXTRA SPOOL